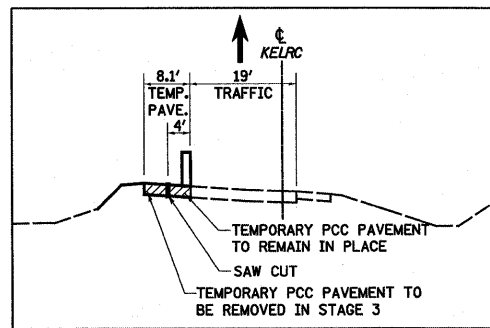


**KELLER RAMP C**

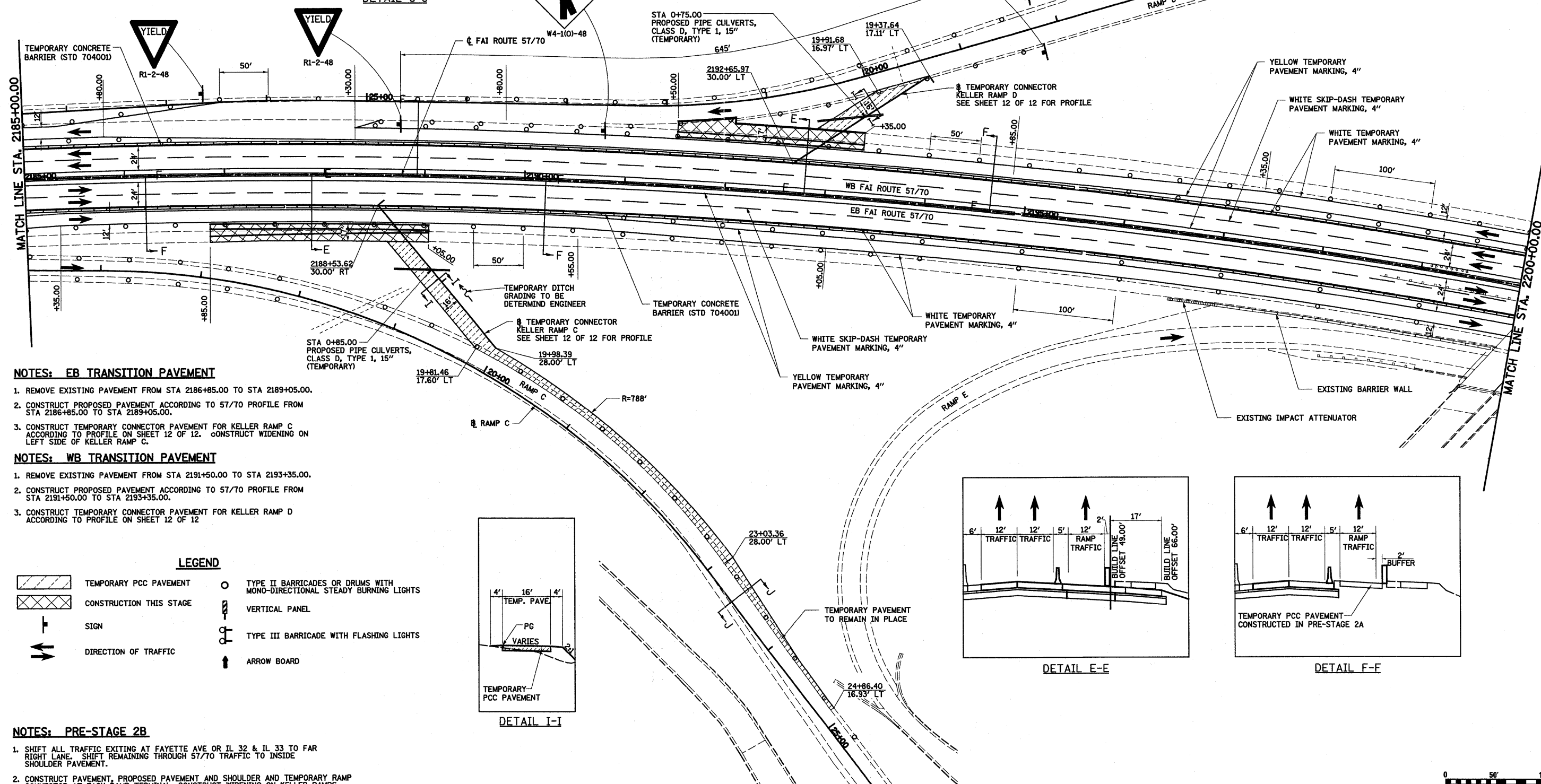
DESCRIPTION	COORDINATE	
	NORTHING	EASTING
POT STA 0+00.00	897717.72	918625.58
POT STA 1+85.12	897772.67	918802.35

**KELLER RAMP D**

DESCRIPTION	COORDINATE	
	NORTHING	EASTING
POT STA 0+00.00	898276.79	918713.22
POT STA 1+62.21	898117.38	918743.24



DETAIL J-J



**NOTES: EB TRANSITION PAVEMENT**

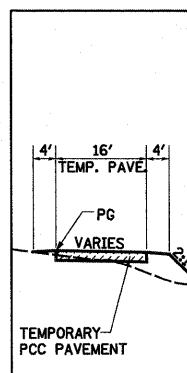
1. REMOVE EXISTING PAVEMENT FROM STA 2186+85.00 TO STA 2189+05.00.
2. CONSTRUCT PROPOSED PAVEMENT ACCORDING TO 57/70 PROFILE FROM STA 2186+85.00 TO STA 2189+05.00.
3. CONSTRUCT TEMPORARY CONNECTOR PAVEMENT FOR KELLER RAMP C ACCORDING TO PROFILE ON SHEET 12 OF 12. CONSTRUCT WIDENING ON LEFT SIDE OF KELLER RAMP C.

**NOTES: WB TRANSITION PAVEMENT**

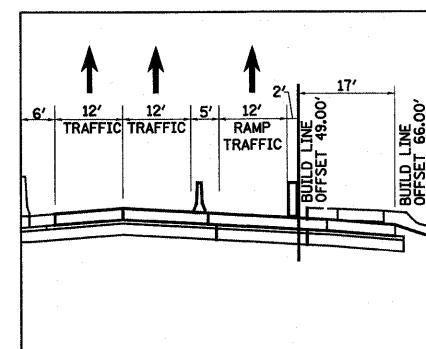
1. REMOVE EXISTING PAVEMENT FROM STA 2191+50.00 TO STA 2193+35.00.
2. CONSTRUCT PROPOSED PAVEMENT ACCORDING TO 57/70 PROFILE FROM STA 2191+50.00 TO STA 2193+35.00.
3. CONSTRUCT TEMPORARY CONNECTOR PAVEMENT FOR KELLER RAMP D ACCORDING TO PROFILE ON SHEET 12 OF 12.

**LEGEND**

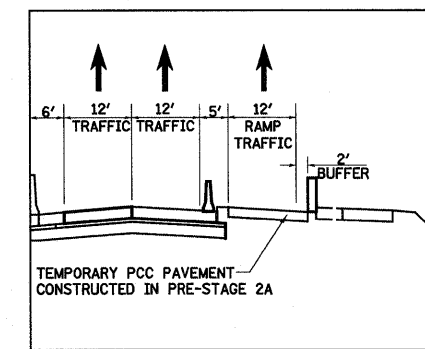
- TEMPORARY PCC PAVEMENT
- CONSTRUCTION THIS STAGE
- SIGN
- DIRECTION OF TRAFFIC
- TYPE II BARRICADES OR DRUMS WITH MONO-DIRECTIONAL STEADY BURNING LIGHTS
- VERTICAL PANEL
- TYPE III BARRICADE WITH FLASHING LIGHTS
- ARROW BOARD



DETAIL I-I



DETAIL E-E



DETAIL F-F

**NOTES: PRE-STAGE 2B**

1. SHIFT ALL TRAFFIC EXITING AT FAYETTE AVE OR IL 32 & IL 33 TO FAR RIGHT LANE. SHIFT REMAINING THROUGH 57/70 TRAFFIC TO INSIDE SHOULDER PAVEMENT.
2. CONSTRUCT PAVEMENT, PROPOSED PAVEMENT AND SHOULDER AND TEMPORARY RAMP CONNECTOR AT EACH RAMP TERMINAL. CONSTRUCT WIDENING ON KELLER RAMP.

FILE NAME =	USER NAME = baeibel	DESIGNED - ESW	REVISED -	<b>STATE OF ILLINOIS DEPARTMENT OF TRANSPORTATION</b>	<b>MAINTENANCE OF TRAFFIC, PRE-STAGE 2B, FAI ROUTE 57/70</b>	F.A.I. RTE.	SECTION	COUNTY	TOTAL SHEETS	SHEET NO.	
S:\Projects\403-00072-51-70\dgn\ML_Keller\wpf_PS2b.dgn		DRAWN - PDB	REVISED -			57/70	(25-3,4)R	EFFINGHAM	1098	130	
PLOT SCALE = 1/8"=1'-0" IN.		CHECKED - BRM	REVISED -			SCALE: 1"=50'		SHEET NO. 6 OF 12 SHEETS		STA. 2185+00.00 TO STA. 2200+00.00	
PLOT DATE = 3/18/2011		DATE - 5-07-08	REVISED -			FED. ROAD DIST. NO.		ILLINOIS FED. AID PROJECT		CONTRACT NO. 74299	