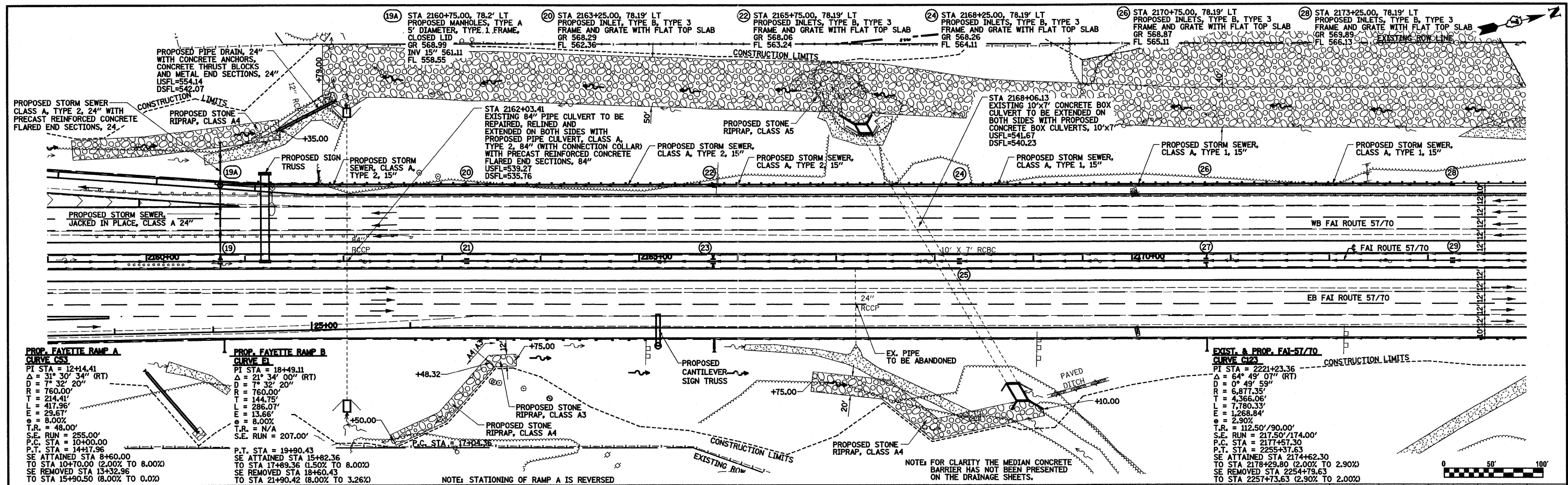


DATE: \_\_\_\_\_  
 BY: \_\_\_\_\_  
 SURVEYED: \_\_\_\_\_  
 PLOTTED: \_\_\_\_\_  
 GRADES CHECKED: \_\_\_\_\_  
 STRUCTURE NOTATION: \_\_\_\_\_  
 NOTE BOOK NO.: \_\_\_\_\_  
 CAD FILE NAME: \_\_\_\_\_

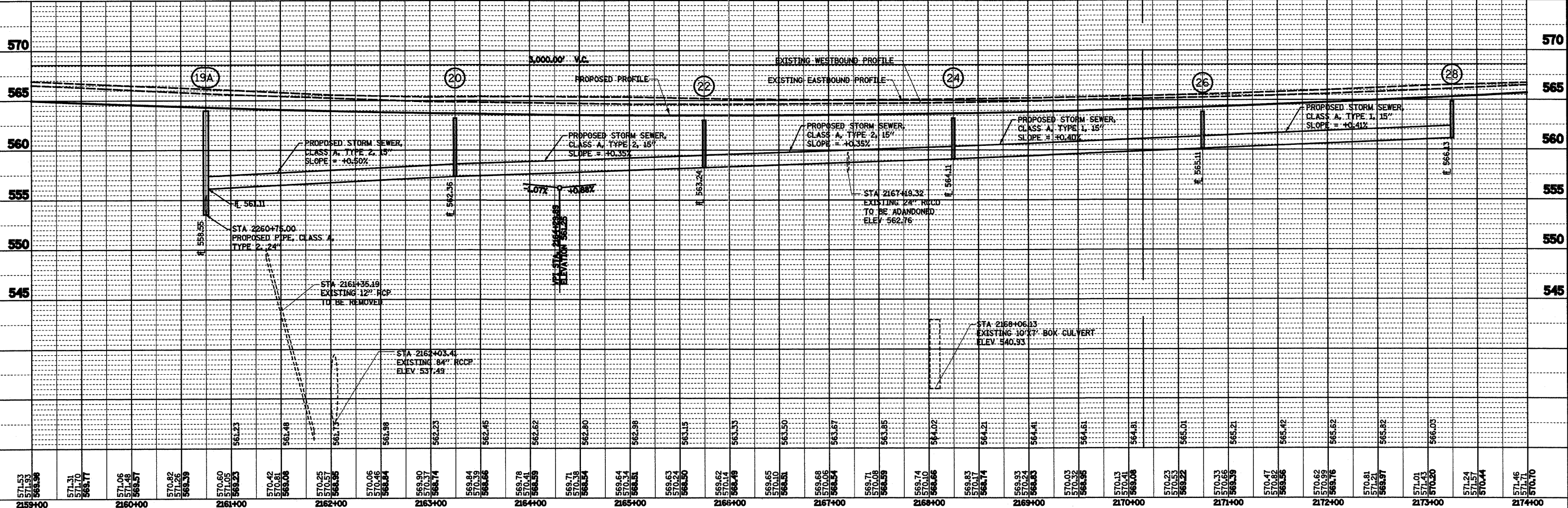
DATE: \_\_\_\_\_  
 BY: \_\_\_\_\_  
 SURVEYED: \_\_\_\_\_  
 PLOTTED: \_\_\_\_\_  
 GRADES CHECKED: \_\_\_\_\_  
 STRUCTURE NOTATION: \_\_\_\_\_  
 NOTE BOOK NO.: \_\_\_\_\_  
 CAD FILE NAME: \_\_\_\_\_



**PROP. FAYETTE RAMP A CURVE C12**  
 PI STA = 12+44.41  
 Δ = 31° 30' 34" (RT)  
 D = 7° 32' 20"  
 R = 760.00'  
 T = 214.41'  
 L = 417.96'  
 E = 29.67'  
 e = 8.00%  
 S.E. RUN = 255.00'  
 P.C. STA = 10+00.00  
 P.T. STA = 14+17.96  
 SE ATTAINED STA 8+60.00 TO STA 10+70.00 (2.00% TO 8.00%)  
 SE REMOVED STA 13+32.96 TO STA 15+30.50 (8.00% TO 0.0%)

**PROP. FAYETTE RAMP B CURVE C1**  
 PI STA = 18+49.11  
 Δ = 21° 34' 00" (RT)  
 D = 7° 32' 20"  
 R = 760.00'  
 T = 144.75'  
 L = 286.07'  
 E = 13.66'  
 e = 8.00%  
 S.E. RUN = N/A  
 P.T. STA = 207.00'

**EXIST. & PROP. FAI-57/70 CURVE C123**  
 PI STA = 2221+23.36  
 Δ = 64° 49' 07" (RT)  
 D = 0° 49' 59"  
 R = 6,877.35'  
 T = 4,366.06'  
 L = 7,780.33'  
 E = 1,268.84'  
 e = 2.90%  
 S.E. RUN = 112.50'/90.00'  
 P.C. STA = 2177+57.30  
 P.T. STA = 2255+37.63  
 SE ATTAINED STA 2174+62.30 TO STA 2178+29.80 (2.00% TO 2.90%)  
 SE REMOVED STA 2254+73.63 TO STA 2257+73.63 (2.90% TO 2.00%)



571.53	571.33	569.96	571.31	571.70	569.77	571.06	571.16	569.57	570.82	571.26	569.39	570.60	570.05	569.23	570.42	570.81	569.08	570.25	570.57	569.95	570.06	570.16	569.54	569.90	570.37	569.74	569.84	570.39	569.66	569.78	570.41	569.59	569.71	570.38	569.54	569.64	570.34	569.51	569.63	570.24	569.50	569.62	570.14	569.48	569.65	570.05	569.50	569.68	570.06	569.54	569.71	570.08	569.59	569.74	570.10	569.66	569.83	570.17	569.74	569.93	570.17	569.65	570.03	570.32	569.56	570.13	570.41	569.08	570.23	570.53	569.22	570.33	570.66	569.39	570.47	570.82	569.56	570.62	569.76	570.81	571.21	569.97	571.01	571.01	570.20	571.24	571.57	570.44	571.46	571.71	570.70
2159+00	2160+00	2161+00	2162+00	2163+00	2164+00	2165+00	2166+00	2167+00	2168+00	2169+00	2170+00	2171+00	2172+00	2173+00	2174+00																																																																												