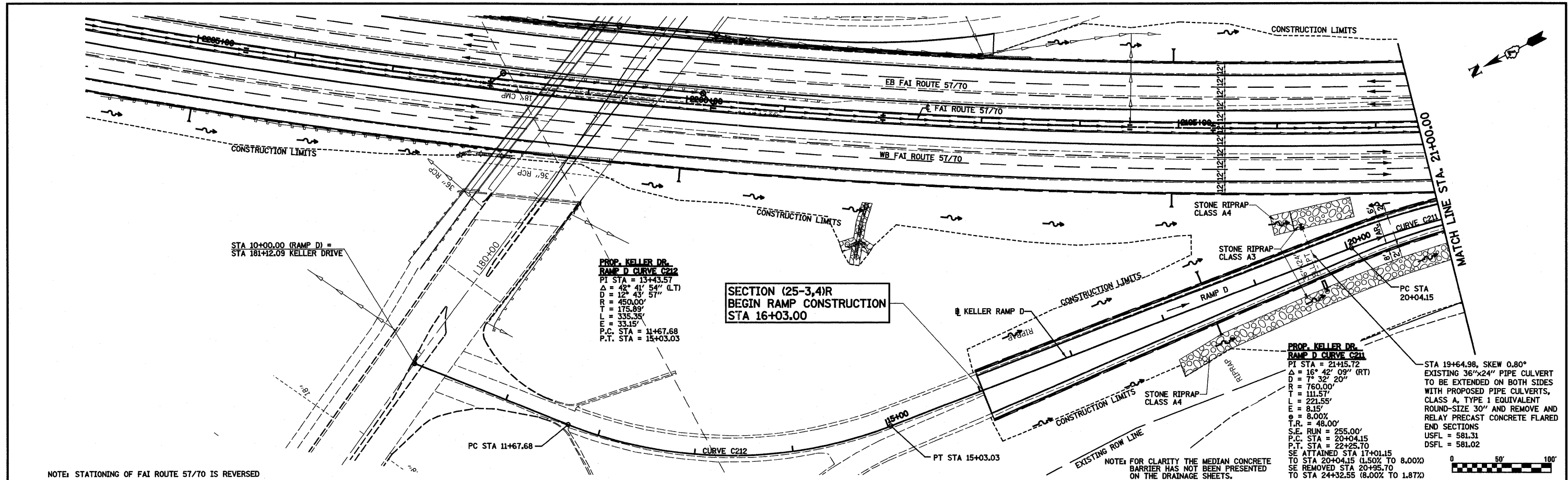


PLAN	SURVEYED	BY	DATE
	PLOTTED		
	NOTED		
	REVISIONS		
	STRUCTURE		
	NO.		
	FILE NAME		

PROFILE	SURVEYED	BY	DATE
	PLOTTED		
	NOTED		
	REVISIONS		
	STRUCTURE		
	NO.		
	FILE NAME		



**PROP. KELLER DR.
RAMP D CURVE C212**
 PI STA = 13+43.57
 $\Delta = 42^\circ 41' 54''$ (LT)
 $D = 12^\circ 43' 57''$
 $R = 450.00'$
 $T = 175.89'$
 $L = 335.35'$
 $PC STA = 11+67.68$
 $P.T. STA = 15+03.03$

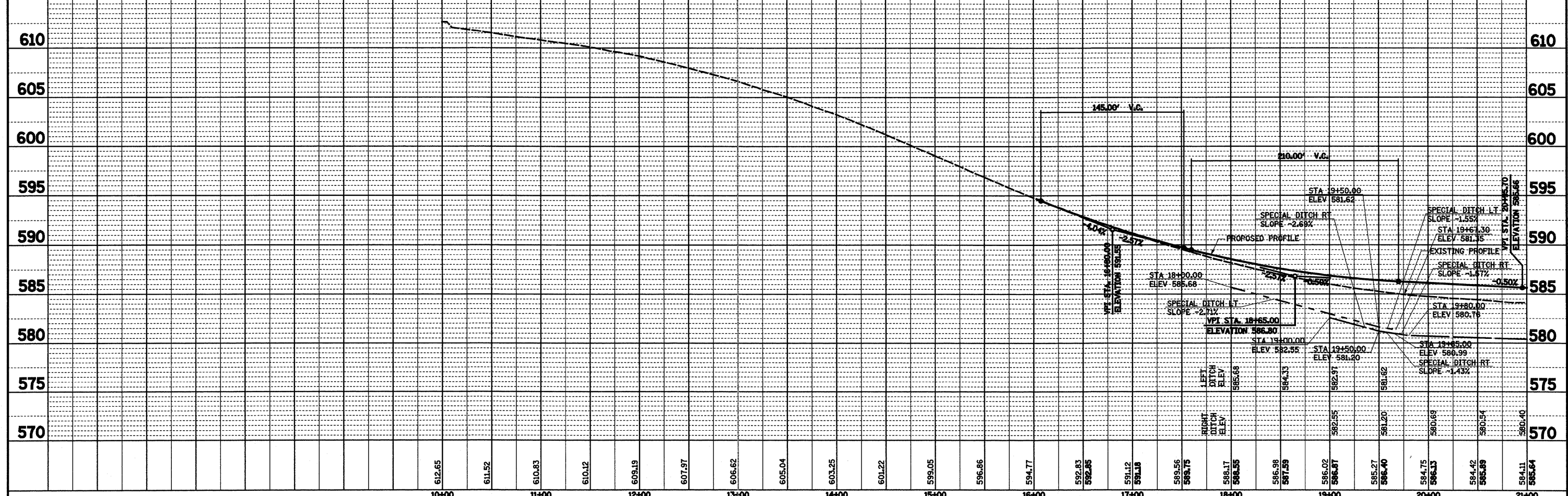
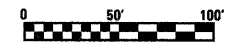
**SECTION (25-3,4)R
BEGIN RAMP CONSTRUCTION
STA 16+03.00**

**PROP. KELLER DR.
RAMP D CURVE C211**
 PI STA = 21+15.72
 $\Delta = 16^\circ 42' 09''$ (RT)
 $D = 7^\circ 32' 20''$
 $R = 760.00'$
 $T = 111.57'$
 $L = 224.55'$
 $E = 8.15'$
 $\theta = 8.00\%$
 $T.R. = 48.00'$
 $S.E. RUN = 255.00'$
 $P.C. STA = 20+04.15$
 $P.T. STA = 22+25.70$
 $SE ATTAINED STA 17+01.15$
 TO STA 20+04.15 (1.50% TO 8.00%)
 SE REMOVED STA 20+95.70
 TO STA 24+32.55 (8.00% TO 1.87%)

STA 19+64.98, SKEW 0.80°
 EXISTING 36"x24" PIPE CULVERT
 TO BE EXTENDED ON BOTH SIDES
 WITH PROPOSED PIPE CULVERTS,
 CLASS A, TYPE 1 EQUIVALENT
 ROUND-SIZE 30" AND REMOVE AND
 REPLY PRECAST CONCRETE FLARED
 END SECTIONS
 USFL = 581.31
 DSFL = 581.02

NOTE: STATIONING OF FAI ROUTE 57/70 IS REVERSED

NOTE: FOR CLARITY THE MEDIAN CONCRETE BARRIER HAS NOT BEEN PRESENTED ON THE DRAINAGE SHEETS.



FILE NAME =	USER NAME = bseibel	DESIGNED - JWS	REVISED -	STATE OF ILLINOIS DEPARTMENT OF TRANSPORTATION	DRAINAGE PLAN AND PROFILE, KELLER DRIVE - RAMP D	F.A.I. RTE. = 57/70	SECTION = (25-3,4)R	COUNTY = EFFINGHAM	TOTAL SHEETS = 1098	SHEET NO. = 185	
PROJECT = 108100725770/Keller Drive, pp. 57/70.dwg	PLOT SCALE = 1/8" = 100.0000' / IN.	DRAWN - PDB	REVISED -			SCALE: 1"=50'	SHEET NO. 7 OF 9 SHEETS	STA. 16+03.00 TO STA. 21+00.00	FED. ROAD DIST. NO. ILLINOIS FED. AID PROJECT	CONTRACT NO. 74299	
	PLOT DATE = 3/18/2011	CHECKED - BRM	REVISED -								
		DATE -	REVISED -								