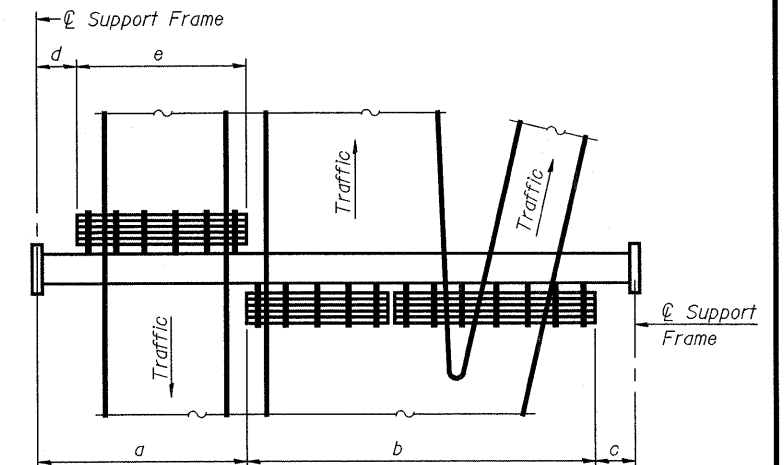
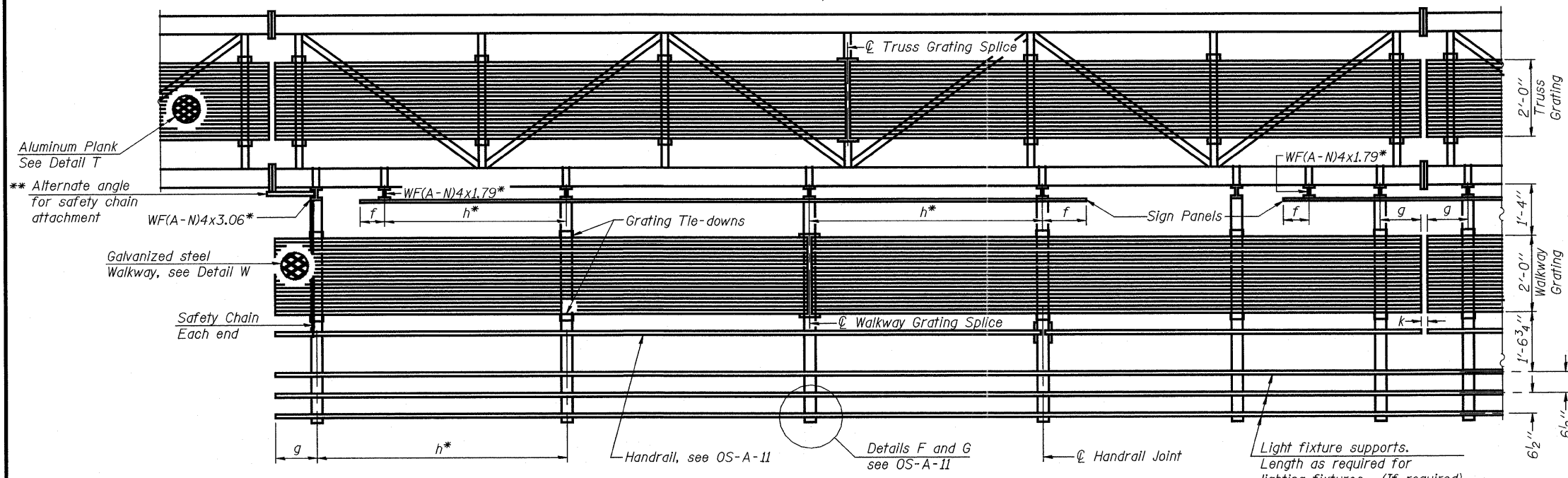


TYPICAL FRONT ELEVATION
 With lights and handrail omitted for clarity.
 For Section B-B, see Base Sheet OS-A-10.

Truss grating to facilitate inspection shall run full length (center to center of support frames) ±12" on overhead trusses. Cost of truss grating is included in "Overhead Sign Structure".



PLAN WALKWAY AND HANDRAIL SKETCH
 (Road plan beneath truss varies)



SECTION A-A

Handrail and walkway shall span a minimum of three brackets between splices and/or gap joints. Place all sign and walkway brackets as close to panel points as practical. Handrail joints, grating, and light support splices placed as needed.

Note: Details shown are considered equal alternatives to the Aluminum Walkway on Base Sheet OS-A-9, and may be substituted by Contractor at no change in contract cost.
 Walkway and Truss Grating width dimensions are nominal and may vary ±1/2" based on available standard widths.

BRACKET TABLE

| Sign Width | | Number Brackets Required |
|--------------|-----------------------|--------------------------|
| Greater Than | Less Than or Equal To | |
| | 8'-0" | 2 |
| 8'-0" | 14'-0" | 3 |
| 14'-0" | 20'-0" | 4 |
| 20'-0" | 26'-0" | 5 |
| 26'-0" | 32'-0" | 6 |

Notes:
 * Space walkway brackets WF(A-N)4x3.06 and sign brackets WF(A-N)4x1.79 for efficiency and within limits shown:
 f = 12" maximum, 4" minimum (End of sign to center of nearest bracket)
 g = 12" maximum, 4" minimum (End of walkway grating to center of nearest support bracket)
 h = 6'-0" maximum (center to center of sign and/or walkway support brackets, WF(A-N)4x1.79 or WF(A-N)4x3.06)
 k = 2" maximum gap between adjacent walkway grating sections and handrail ends
 ** If walkway bracket at safety chain location is behind sign, add angle to bracket, see Alternate Safety Chain Attachment on Base Sheet OS-A-11.
 For Details T and W, Section B-B and Grating Splice Details see Base Sheet OS-A-10.
 For handrail details see base sheet OS-A-11.

| Structure Number | Station | a | b | c | d | e | Walkway Grating and Handrail Lengths |
|------------------|---------|--------|--------|--------|---|---|--------------------------------------|
| 7S025I057R159.0 | 2131+68 | 16'-0" | 57'-0" | 18'-0" | - | - | 57'-0" |
| 7S025I057L159.6 | 2161+20 | 16'-0" | 56'-0" | 18'-0" | - | - | 56'-0" |
| 7S025I057R160.7 | 2219+50 | 14'-0" | 58'-0" | 18'-0" | - | - | 58'-0" |
| 7S025I057R161.3 | 2249+25 | 7'-9" | 56'-6" | 7'-9" | - | - | 56'-6" |
| 7S025I057L160.4 | 26+98 | 12'-5" | 46'-0" | 12'-7" | - | - | 46'-0" |

OS-A-9S

7-1-10