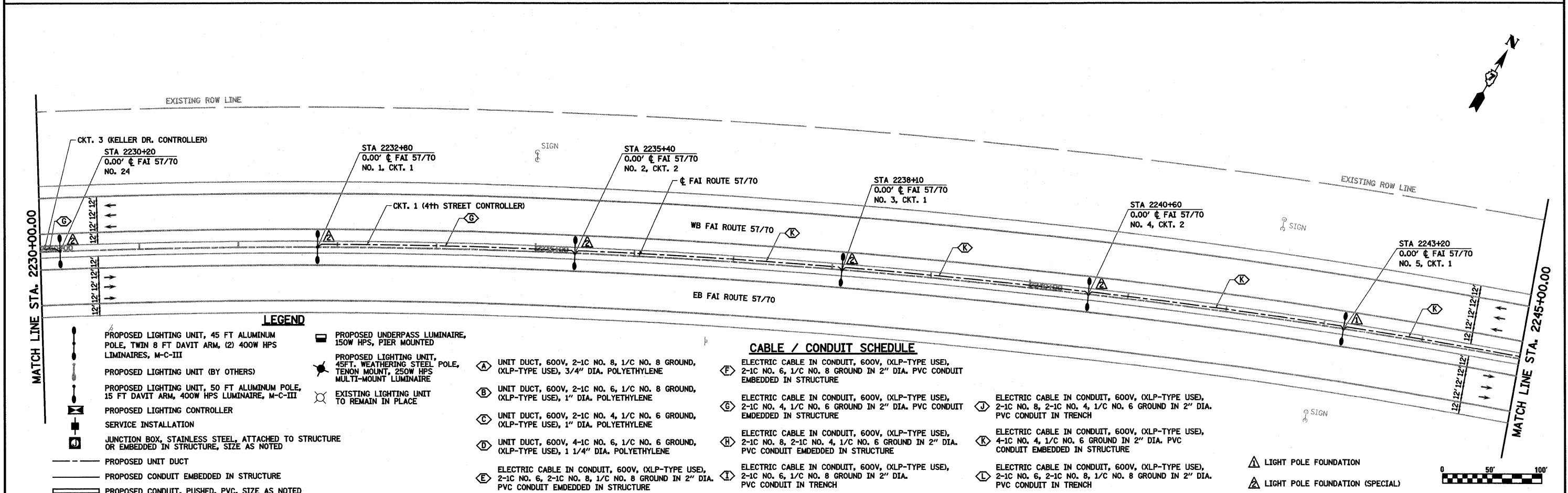


NOTE:
1. SEE SIGN LIGHTING DETAILS
SEE SHEET 34 OF 34 (TYP)



LEGEND

- PROPOSED LIGHTING UNIT, 45 FT ALUMINUM POLE, TWIN 8 FT DAVIT ARM, (2) 400W HPS LIMINAIRES, M-C-III
- PROPOSED LIGHTING UNIT (BY OTHERS)
- PROPOSED LIGHTING UNIT, 50 FT ALUMINUM POLE, 15 FT DAVIT ARM, 400W HPS LUMINAIRE, M-C-III
- PROPOSED LIGHTING CONTROLLER
- SERVICE INSTALLATION
- JUNCTION BOX, STAINLESS STEEL, ATTACHED TO STRUCTURE OR EMBEDDED IN STRUCTURE, SIZE AS NOTED
- PROPOSED UNIT DUCT
- PROPOSED CONDUIT EMBEDDED IN STRUCTURE
- PROPOSED CONDUIT, PUSHED, PVC, SIZE AS NOTED
- PROPOSED UNDERPASS LUMINAIRE, 150W HPS, PIER MOUNTED
- PROPOSED LIGHTING UNIT, 45FT. WEATHERING STEEL POLE, TENON MOUNT, 250W HPS MULTI-MOUNT LUMINAIRE
- EXISTING LIGHTING UNIT TO REMAIN IN PLACE

CABLE / CONDUIT SCHEDULE

- A** UNIT DUCT, 600V, 2-1C NO. 8, 1/C NO. 8 GROUND, (XLP-TYPE USE), 3/4" DIA. POLYETHYLENE
- B** UNIT DUCT, 600V, 2-1C NO. 6, 1/C NO. 8 GROUND, (XLP-TYPE USE), 1" DIA. POLYETHYLENE
- C** UNIT DUCT, 600V, 2-1C NO. 4, 1/C NO. 6 GROUND, (XLP-TYPE USE), 1" DIA. POLYETHYLENE
- D** UNIT DUCT, 600V, 4-1C NO. 6, 1/C NO. 6 GROUND, (XLP-TYPE USE), 1 1/4" DIA. POLYETHYLENE
- E** ELECTRIC CABLE IN CONDUIT, 600V, (XLP-TYPE USE), 2-1C NO. 6, 2-1C NO. 8, 1/C NO. 8 GROUND IN 2" DIA. PVC CONDUIT EMBEDDED IN STRUCTURE
- F** ELECTRIC CABLE IN CONDUIT, 600V, (XLP-TYPE USE), 2-1C NO. 6, 1/C NO. 8 GROUND IN 2" DIA. PVC CONDUIT EMBEDDED IN STRUCTURE
- G** ELECTRIC CABLE IN CONDUIT, 600V, (XLP-TYPE USE), 2-1C NO. 4, 1/C NO. 6 GROUND IN 2" DIA. PVC CONDUIT EMBEDDED IN STRUCTURE
- H** ELECTRIC CABLE IN CONDUIT, 600V, (XLP-TYPE USE), 2-1C NO. 8, 2-1C NO. 4, 1/C NO. 6 GROUND IN 2" DIA. PVC CONDUIT EMBEDDED IN STRUCTURE
- I** ELECTRIC CABLE IN CONDUIT, 600V, (XLP-TYPE USE), 2-1C NO. 6, 1/C NO. 8 GROUND IN 2" DIA. PVC CONDUIT IN TRENCH
- J** ELECTRIC CABLE IN CONDUIT, 600V, (XLP-TYPE USE), 2-1C NO. 8, 2-1C NO. 4, 1/C NO. 6 GROUND IN 2" DIA. PVC CONDUIT IN TRENCH
- K** ELECTRIC CABLE IN CONDUIT, 600V, (XLP-TYPE USE), 4-1C NO. 4, 1/C NO. 6 GROUND IN 2" DIA. PVC CONDUIT EMBEDDED IN STRUCTURE
- L** ELECTRIC CABLE IN CONDUIT, 600V, (XLP-TYPE USE), 2-1C NO. 6, 2-1C NO. 8, 1/C NO. 8 GROUND IN 2" DIA. PVC CONDUIT IN TRENCH

- LIGHT POLE FOUNDATION
- LIGHT POLE FOUNDATION (SPECIAL)

FILE NAME =	USER NAME = paul	DESIGNED - VG	REVISED -	STATE OF ILLINOIS DEPARTMENT OF TRANSPORTATION	PROPOSED LIGHTING FAI ROUTE 57/70		F.A.I. RTE.	SECTION	COUNTY	TOTAL SHEETS	SHEET NO.	
5:\Projects\08-257-70\Lighting\Lighting.dwg		DRAWN - PDB	REVISED -		SCALE: 1"=50'	SHEET NO. 20 OF 34 SHEETS	STA. 2215+00.00' TO STA. 2245+00.00'	57/70	(25-3,4)R	EFFINGHAM	1098	318
		CHECKED - BRM	REVISED -							CONTRACT NO. 74299		
		DATE - 5-02-08	REVISED -							ILLINOIS FED. AID PROJECT		