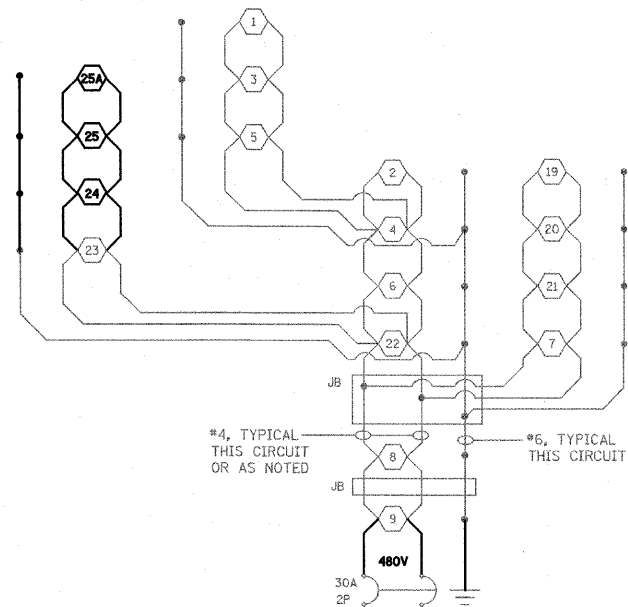
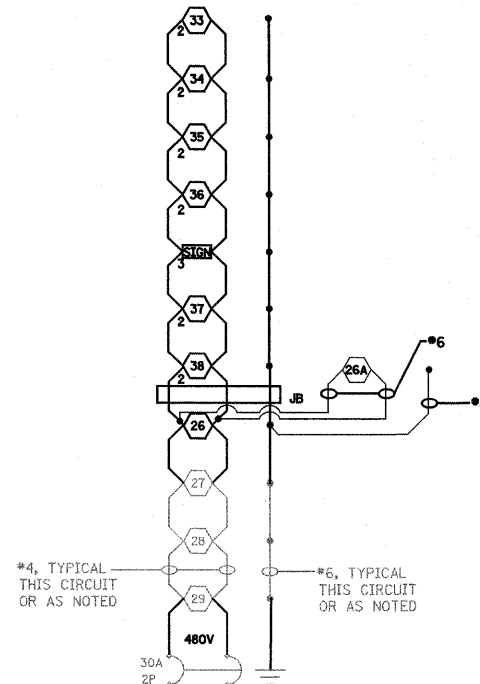


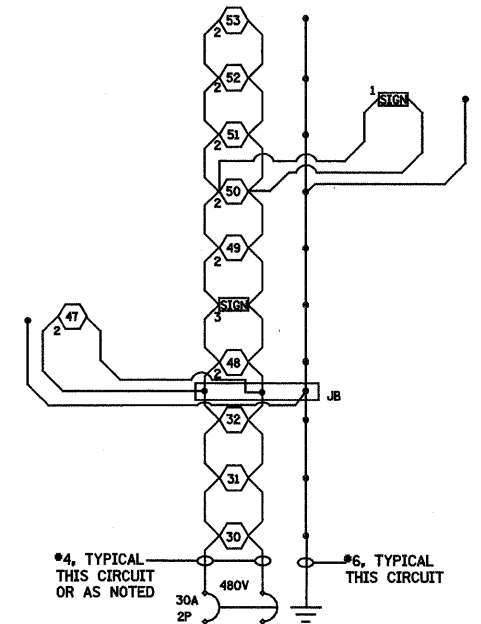
LIGHTING CKT 1 (EXISTING - NO CHANGE)
EXISTING LIGHTING CONTROLLER BASE MOUNTED



LIGHTING CKT 2 (EXISTING MODIFIED)
EXISTING LIGHTING CONTROLLER BASE MOUNTED



LIGHTING CKT 3 (EXISTING MODIFIED)
EXISTING LIGHTING CONTROLLER BASE MOUNTED

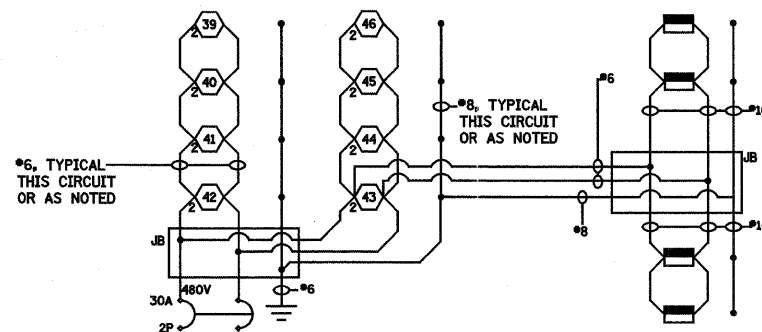


LIGHTING CKT 4 (PROPOSED)
EXISTING LIGHTING CONTROLLER BASE MOUNTED

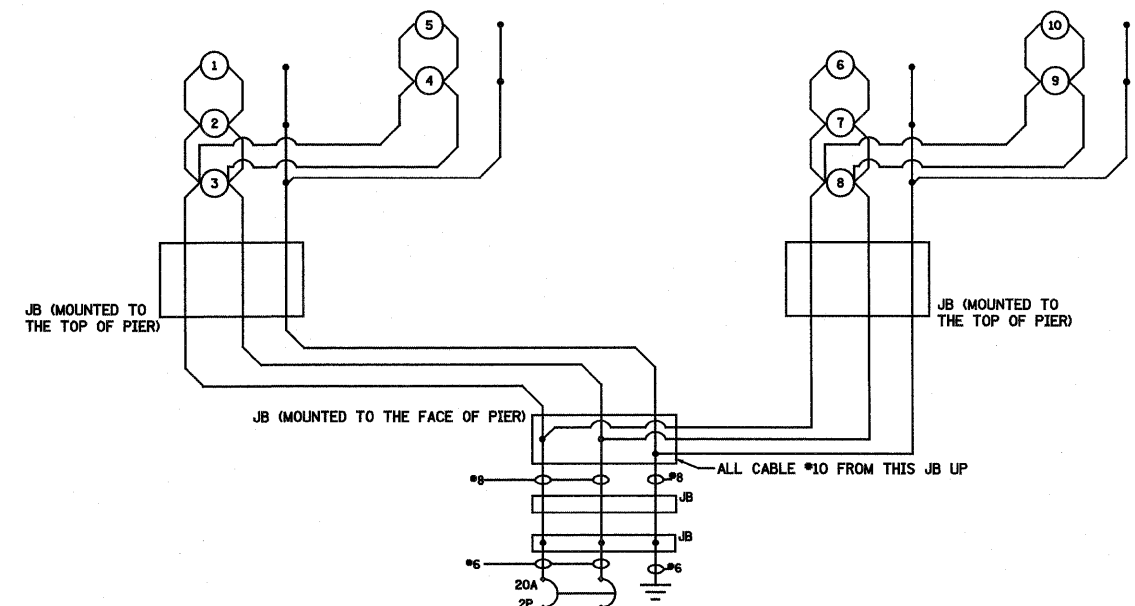
NOTES:

- ALL NECESSARY REVISIONS TO THE WIRING SHOWN ON THIS SHEET SHALL BE MADE AT NO ADDITIONAL COST TO THE DEPARTMENT AND TO THE SATISFACTION OF THE ENGINEER.

- 400W PROPOSED LUMINAIRE
- (2) 400W PROPOSED LUMINAIRES
- SIGN LIGHTING, NUMBER OF 150W LUMINAIRES AS INDICATED
- JUNCTION BOX
- 150W UNDERPASS LUMINAIRE
- 50W PEDESTRIAN BRIDGE LUMINAIRE



LIGHTING CKT 5 (PROPOSED)
EXISTING LIGHTING CONTROLLER BASE MOUNTED



LIGHTING CKT 6 (PROPOSED BRIDGE LIGHTING)
EXISTING LIGHTING CONTROLLER BASE MOUNTED

FILE NAME =	USER NAME = paul	DESIGNED - VG	REVISED -	STATE OF ILLINOIS DEPARTMENT OF TRANSPORTATION	WIRING DIAGRAM (FAYETTE AVENUE CONTROLLER) FAI ROUTE 57/70	F.A.I. RTE.	SECTION	COUNTY	TOTAL SHEETS	SHEET NO.	
S:\Projects\403-00072-57-70\dgn\ML_Keller_Lighting.dgn		DRAWN - PDB	REVISED -			57/70	(25-3,4)R	EFFINGHAM	1098	324	
		CHECKED - BRM	REVISED -			CONTRACT NO. 74299					
		DATE - 8-5-10	REVISED -			FED. ROAD DIST. NO. ILLINOIS FED. AID PROJECT					
PLOT SCALE = 48,0000' / IN.				SCALE:	SHEET NO. 26 OF 34 SHEETS	STA.	TO STA.				