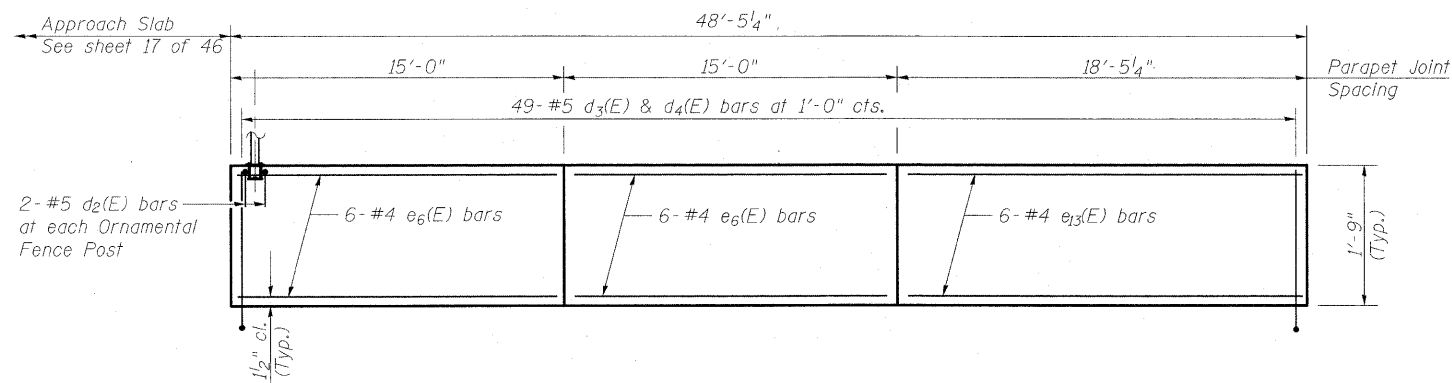


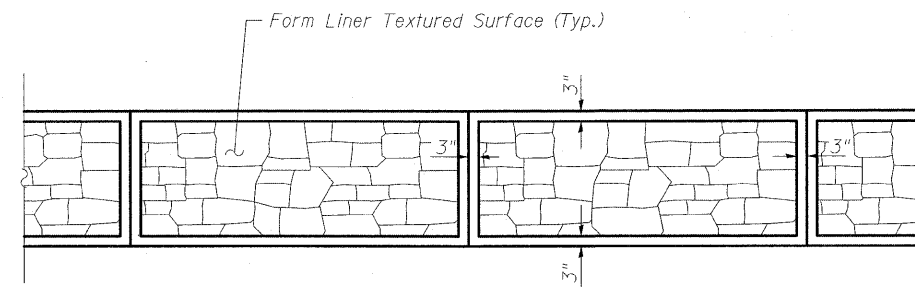
**EAST APPROACH
BILL OF MATERIAL**

Bar	No.	Size	Length	Shape
a7(E)	176	#6	14'-1"	┌
a8(E)	176	#6	12'-8"	┌
a9(E)	105	#6	7'-2"	┌
a10(E)	105	#6	5'-9"	┌
a12(E)	32	#5	1'-6"	┌
a13(E)	23	#6	14'-8"	┌
a14(E)	23	#6	13'-3"	┌
a15(E)	4	#6	19'-6"	┌
b19(E)	58	#5	49'-6"	—
b20(E)	58	#5	45'-6"	—
b21(E)	2	#5	18'-5"	—
b22(E)	29	#5	5'-0"	┌
b23(E)	15	#5	48'-2"	—
b24(E)	15	#5	45'-5"	—
d2(E)	72	#5	1'-11"	┌
d3(E)	277	#5	4'-0"	┌
d4(E)	277	#5	3'-2"	┌
e6(E)	84	#4	14'-9"	—
e13(E)	6	#4	18'-2"	—
e14(E)	6	#4	15'-5"	—
e15(E)	6	#4	18'-4"	—
e16(E)	6	#4	13'-3"	—
Aggregate Base Cse. Type B, 8"		Sq. Yd.	149	
Concrete Superstructure		Cu. Yd.	161.8	
Form Liner Textured Surface		Sq. Ft.	669	
Reinforcement Bars, Epoxy Coated		Pound	20,950	
Mechanically Stabilized Earth Retaining Wall		Sq. Ft.	5025	
Structure Excavation		Cu. Yd.	1365	
Portland Cement Concrete Pavement 6"		Sq. Yd.	149	
Pavement Fabric		Sq. Yd.	149	



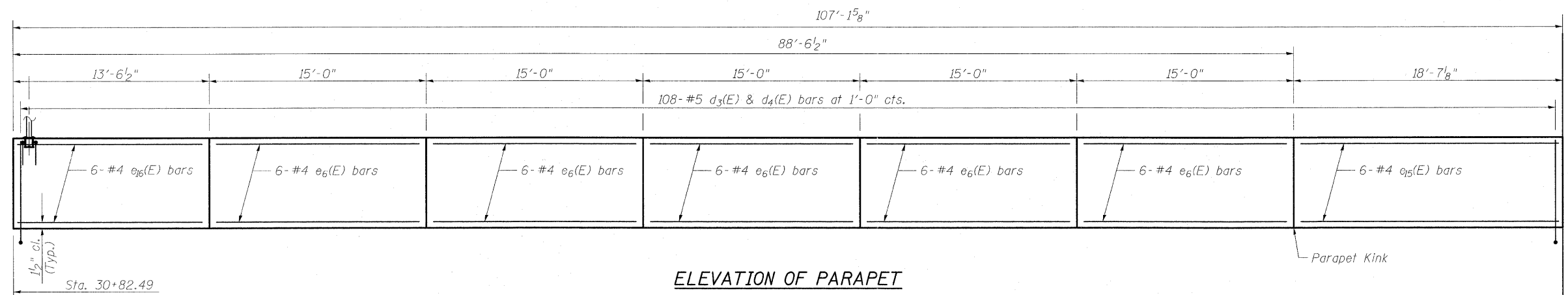
ELEVATION OF PARAPET

Left Parapet inside Elevation
Sta. 28+38.94 to Sta. 28+68.21



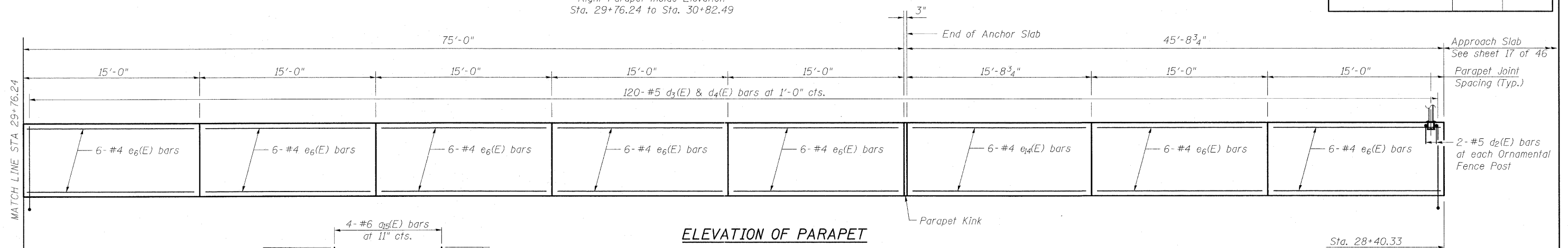
FORM LINER TEXTURED SURFACE APPLICATION

(Each Face)
See sheet 2 of 46 for Form Liner Textured Surface Details.



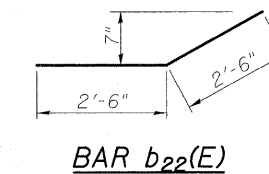
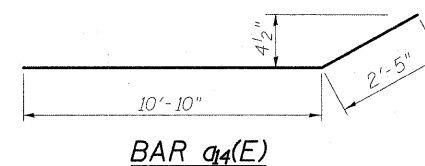
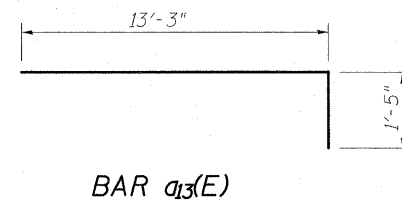
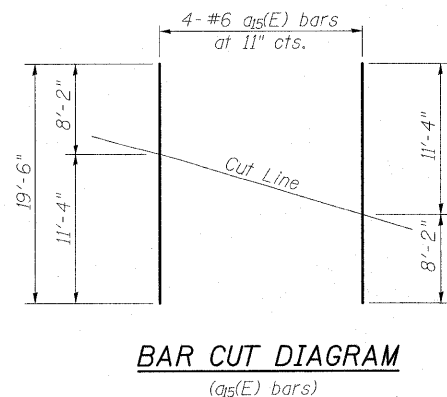
ELEVATION OF PARAPET

Right Parapet inside Elevation
Sta. 29+76.24 to Sta. 30+82.49



ELEVATION OF PARAPET

Right Parapet inside Elevation
Sta. 28+40.33 to Sta. 29+76.24



Notes:
Dimensions shown are taken along inside face of parapet.
See sheet 30 of 46 for Parapet Joint Detail.

FILE NAME = ...D774299-0256010-sth035.dgn

USER NAME =

DESIGNED - BB

REVISED -

BERNARDIN LOCKMILLER & ASSOCIATES, INC.

Illinois Design Firm Number 1B4.001670

CHECKED - ACS

REVISED -

MARYVILLE, ILLINOIS 62446

PLOT SCALE =

DRAWN - WJS

REVISED -

PHONE (618) 288-4666

PLOT DATE = 7:48:45 AM 5/6/2011

CHECKED - CJF

REVISED -

FAX (618) 288-4666

**STATE OF ILLINOIS
DEPARTMENT OF TRANSPORTATION**

**EAST APPROACH PARAPET DETAILS
STRUCTURE NUMBER 025-6010**

SHEET NO. 35 OF 46 SHEETS

F.A.T. RTE.	SECTION	COUNTY	TOTAL SHEETS	SHEET NO.
57/70	(25-3)PB	EFFINGHAM	1098	404
SN 025-6010		CONTRACT NO. 74299		
FED. ROAD DIST. NO. 7 ILLINOIS FED. AID PROJECT				