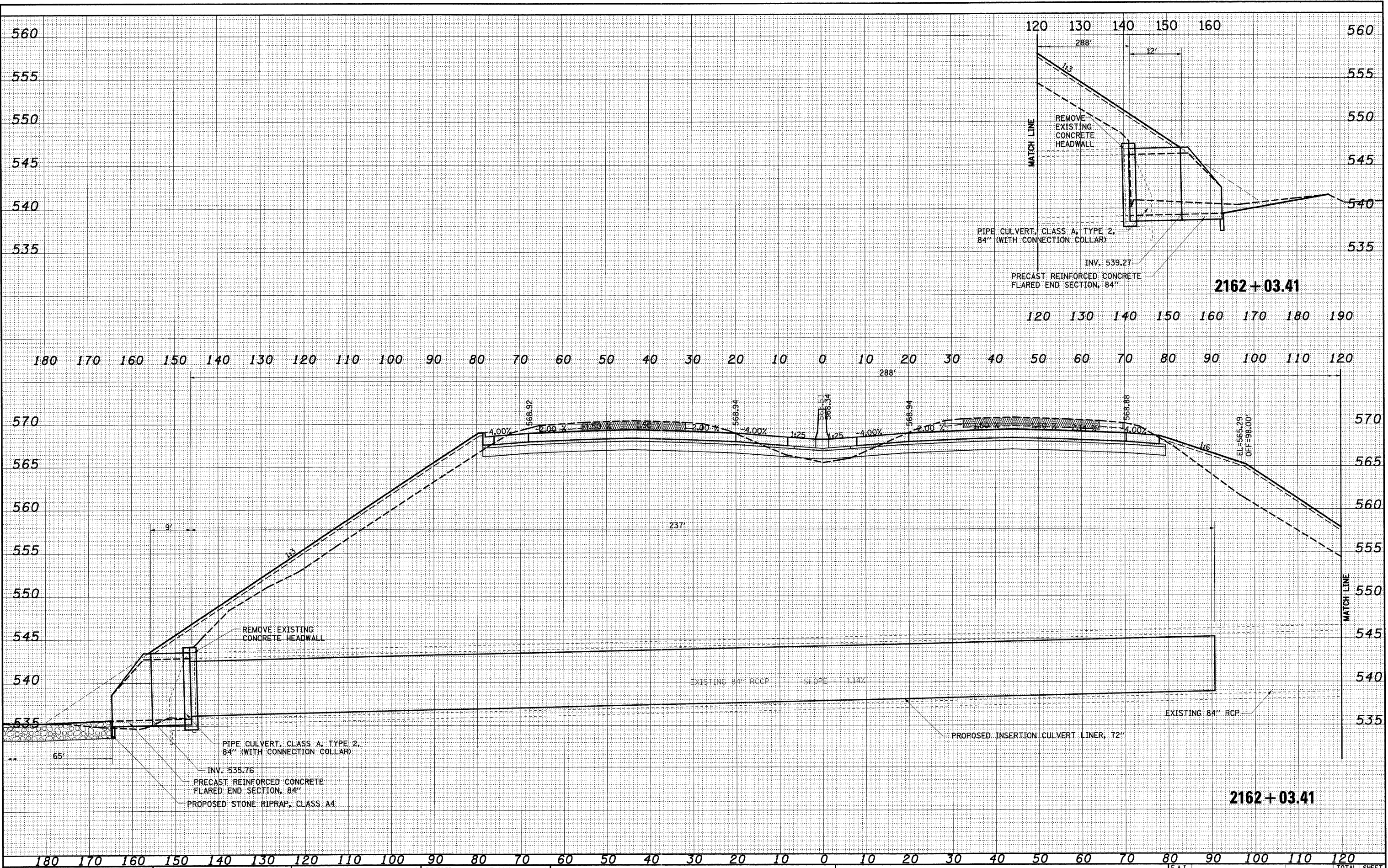


DATE	
BY	
REVIEWED	
DESIGNED	
DRAWN	
CHECKED	
DATE	

DATE	
BY	
REVIEWED	
DESIGNED	
DRAWN	
CHECKED	
DATE	



FILE NAME =	USER NAME = paul	DESIGNED - JWS	REVISED - 4-27-2011	<b>STATE OF ILLINOIS DEPARTMENT OF TRANSPORTATION</b>	<b>CULVERT PROFILES, FAI ROUTE 57/70</b>			F.A.I. RTE. 57/70	SECTION (25-3,4)R	COUNTY EFFINGHAM	TOTAL SHEETS 1098	SHEET NO. 417
PLOT SCALE = 28.00000' / IN.					SCALE: 1"=10'			SHEET NO. 2 OF 11 SHEETS		CONTRACT NO. 74299		
PLOT DATE = 4/28/2011					DATE - 4-01-08			STA. 2162+03.41 TO STA. 2162+03.41		ILLINOIS FED. AID PROJECT		