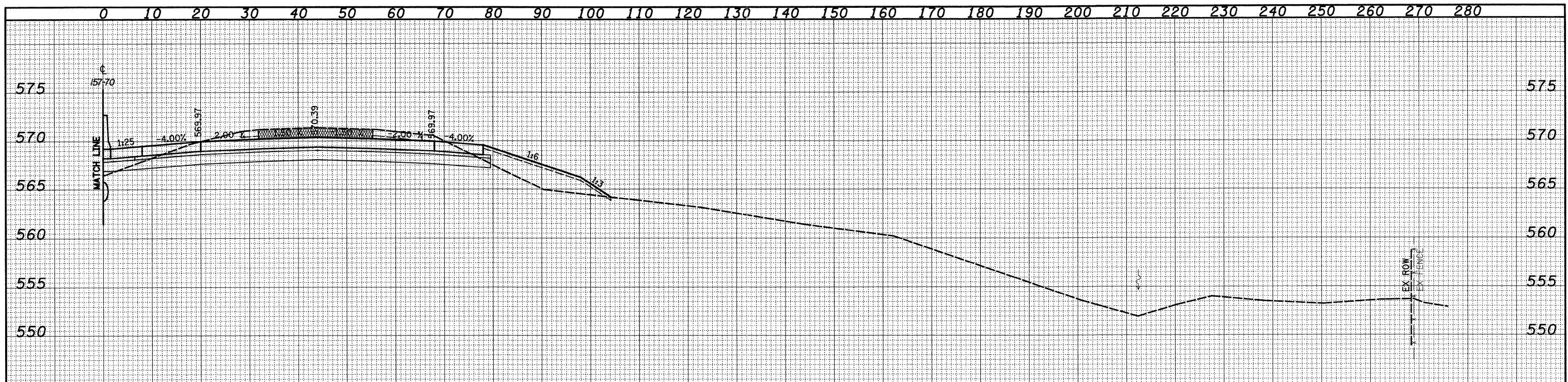
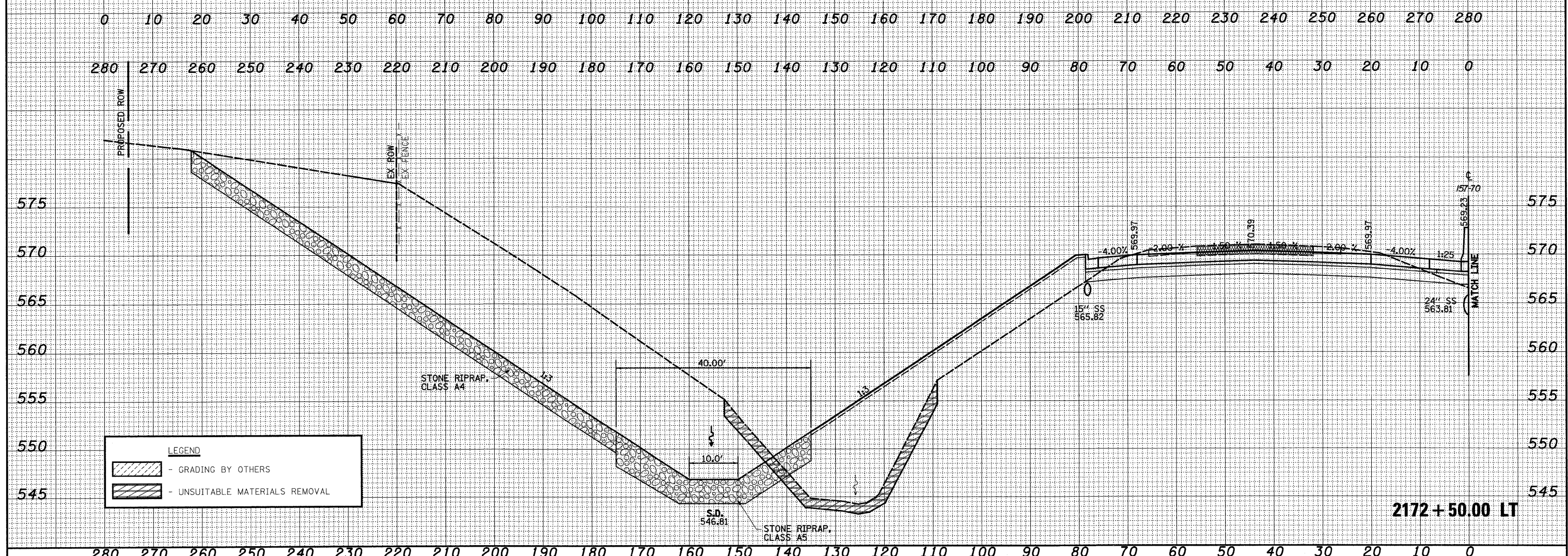


DATE	
BY	
FINAL SURVEY	
SURVEYED	
PLOTTED	
TEMPLATE	
NOTE BOOK	
AREAS CHECKED	

DATE	
BY	
ORIGINAL SURVEY	
SURVEYED	
PLOTTED	
TEMPLATE	
NOTE BOOK	
AREAS CHECKED	



2172+50.00 RT



2172+50.00 LT

LEGEND	
	- GRADING BY OTHERS
	- UNSUITABLE MATERIALS REMOVAL

FILE NAME =	USER NAME = John	DESIGNED - JWS	REVISED -	STATE OF ILLINOIS DEPARTMENT OF TRANSPORTATION	CROSS SECTIONS FAI 57/70	F.A.I. RTE.	SECTION	COUNTY	TOTAL SHEETS	SHEET NO.
57/70	25-3,4R	EFFINGHAM	1098			514				
PLOT SCALE = 20.00000' / IN.		CHECKED - BRM	REVISED -			CONTRACT NO. 74299				
PLOT DATE = 3/20/2011		DATE - 4-01-08	REVISED -	SCALE: 1"=10'		SHEET NO. 88 OF 199 SHEETS	STA. 2172+50.00 TO STA. 2172+50.00	FED. ROAD DIST. NO. ILLINOIS FED. AID PROJECT		