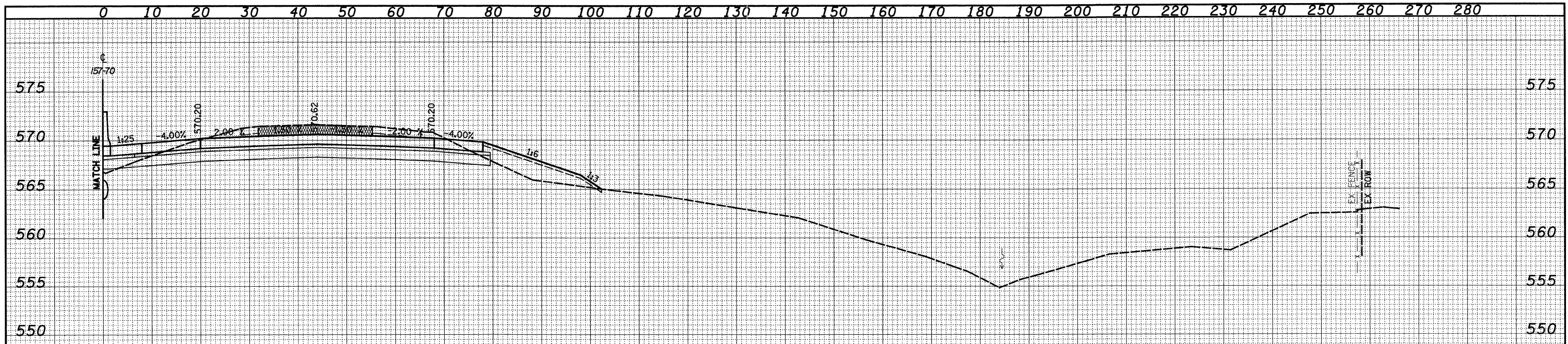
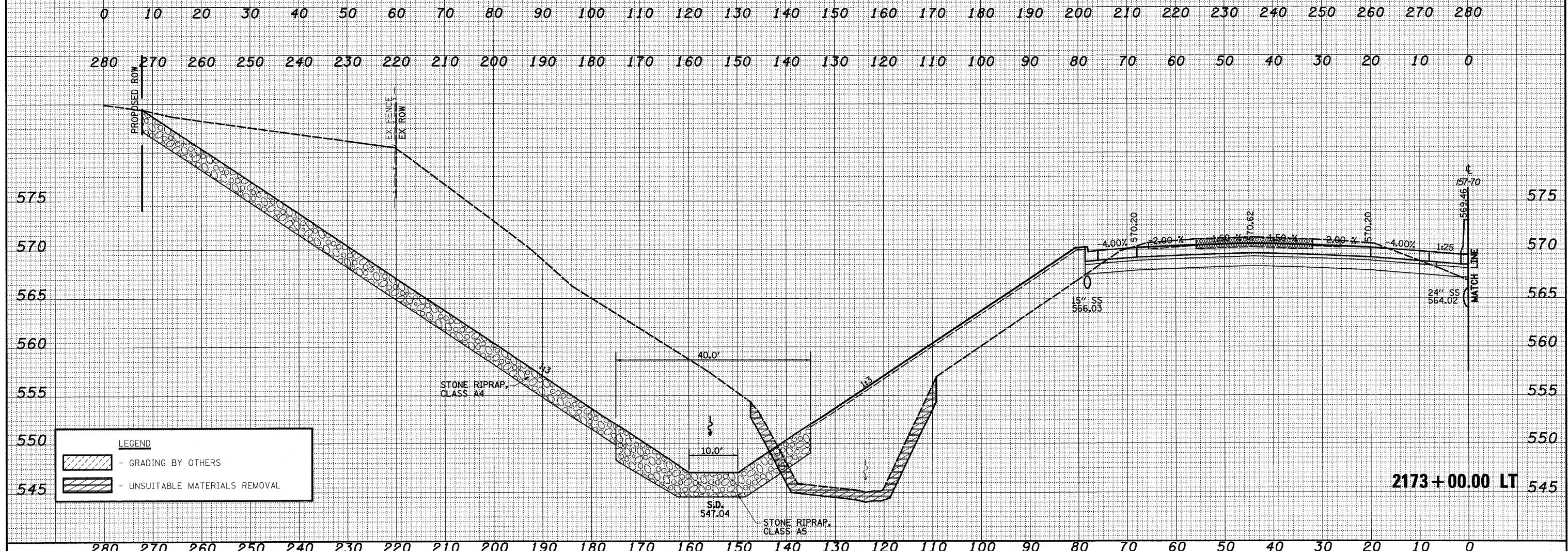


DATE	
BY	
FINAL SURVEY	
SURVEYED	
PLOTTED	
TEMPLATE	
NOTE BOOK	
AREAS CHECKED	
NO.	

DATE	
BY	
ORIGINAL SURVEY	
SURVEYED	
PLOTTED	
TEMPLATE	
NOTE BOOK	
AREAS CHECKED	
NO.	



2173+00.00 RT



2173+00.00 LT

LEGEND	
	- GRADING BY OTHERS
	- UNSUITABLE MATERIALS REMOVAL

FILE NAME =	USER NAME = John	DESIGNED - JWS	REVISED -	STATE OF ILLINOIS DEPARTMENT OF TRANSPORTATION	CROSS SECTIONS FAI 57/70	F.A.I. RTE.	SECTION	COUNTY	TOTAL SHEETS	SHEET NO.	
S:\Project\487-8872.57-70\p\ML_Keller\work\Plan_Keller.dwg		DRAWN - LEC	REVISED -			57/70	(25-3,4)R	EFFINGHAM	1098	515	
PLOT SCALE = 20.00000' / IN.		CHECKED - BRM	REVISED -			CONTRACT NO. 74299					
PLOT DATE = 3/20/2011		DATE - 4-01-08	REVISED -			SCALE: 1"=10'		SHEET NO. 89 OF 199 SHEETS		STA. 2173+00.00 TO STA. 2173+00.00	
						FED. ROAD DIST. NO. ILLINOIS FED. AID PROJECT					