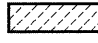
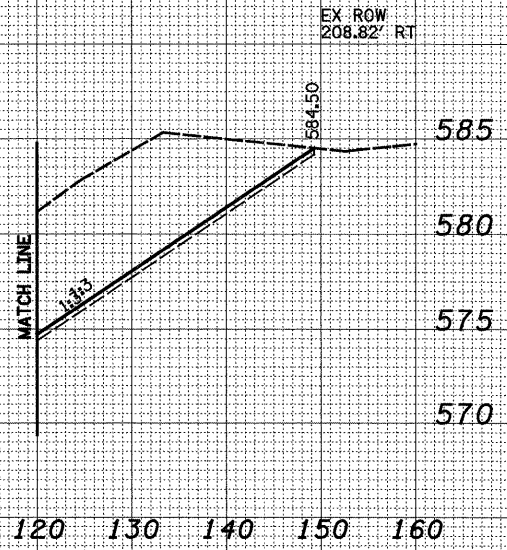
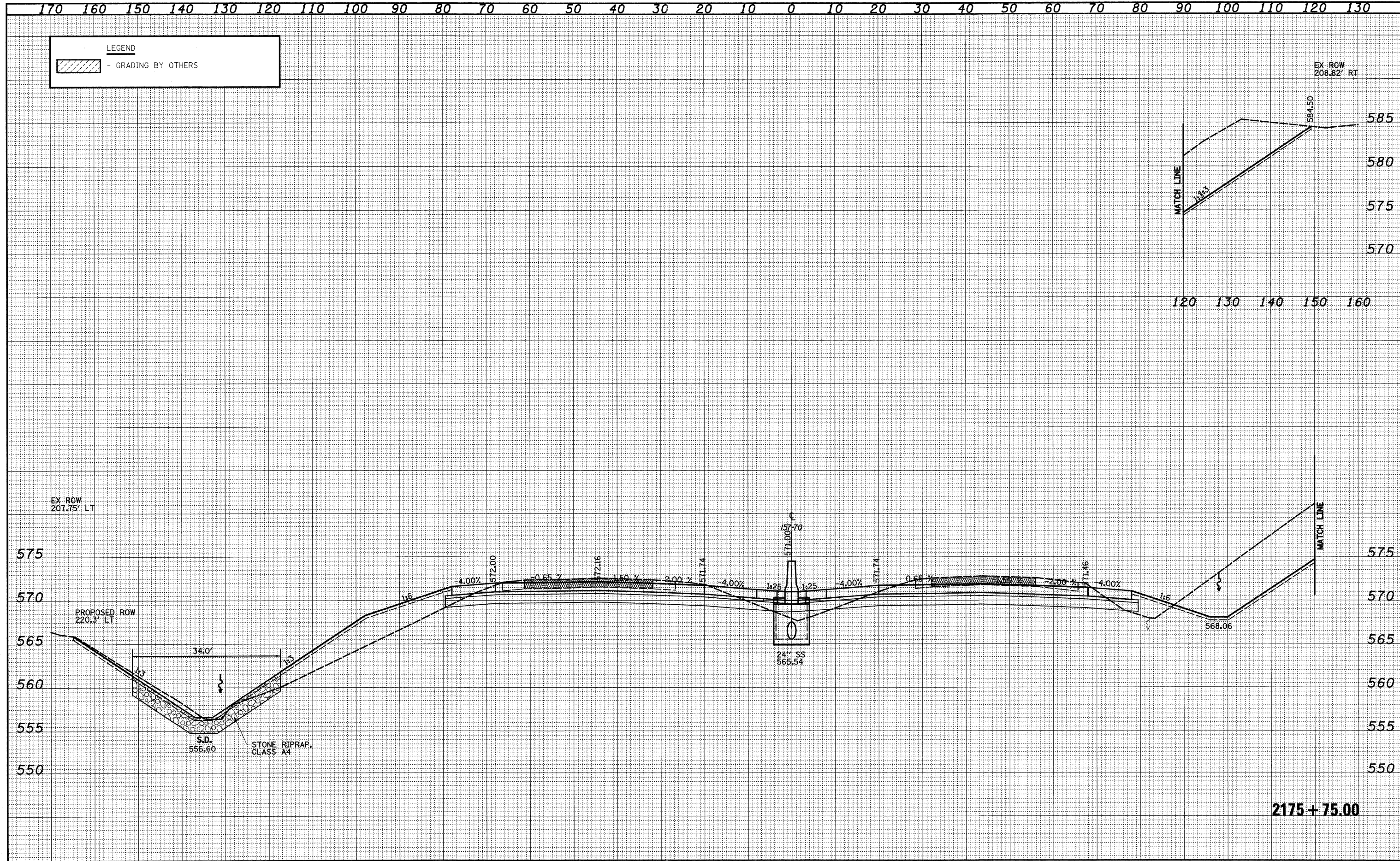


DATE	
BY	
SURVEYED	
PLOTTED	
TEMPLATE	
AREAS CHECKED	
FINAL SURVEY	
NOTE BOOK	
NO.	

DATE	
BY	
SURVEYED	
PLOTTED	
TEMPLATE	
AREAS CHECKED	
ORIGINAL SURVEY	
NOTE BOOK	
NO.	

LEGEND

 - GRADING BY OTHERS



2175 + 75.00

FILE NAME =	USER NAME = John	DESIGNED - JWS	REVISED -	STATE OF ILLINOIS DEPARTMENT OF TRANSPORTATION	CROSS SECTIONS FAI 57/70			F.A.I. RTE.	SECTION	COUNTY	TOTAL SHEETS	SHEET NO.
50\Projects\MD-0007257-70\p\W.Keller\work\Plan.Keller.dwg		DRAWN - LEC	REVISED -		57/70	(25-3,4)R	EFFINGHAM	1098	522			
	PLOT SCALE = 20.0000' / IN.	CHECKED - BRM	REVISED -		SCALE: 1"=10'			SHEET NO. 96 OF 199 SHEETS STA. 2175+75.00 TO STA. 2175+75.00				
	PLOT DATE = 3/20/2011	DATE - 4-01-08	REVISED -		CONTRACT NO. 74299			FED. ROAD DIST. NO. ILLINOIS FED. AID PROJECT				