


150 140 130 120 110 100 90 80 70 60 50 40 30 20 10 0 10 20 30 40 50 60 70 80 90 100 110 120 130 140 150

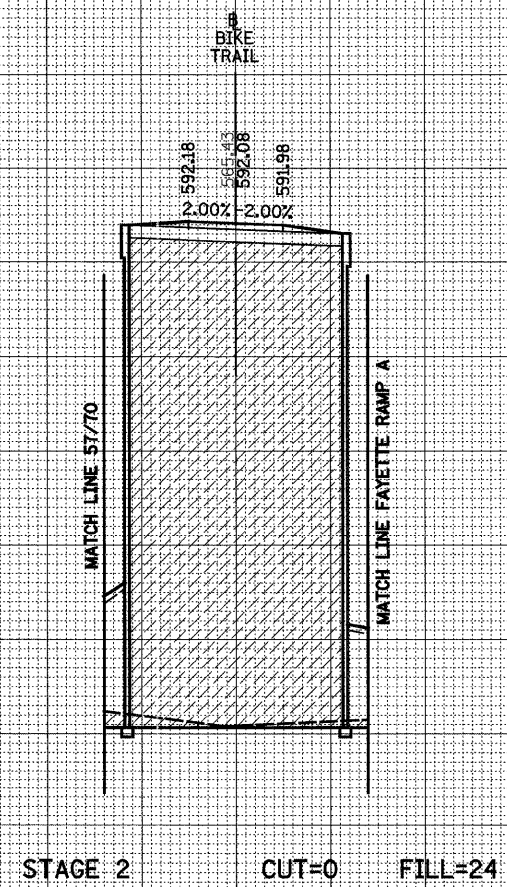
**LEGEND**  
 - GRADING BY OTHERS

FINAL SURVEY NOTE BOOK NO.	SURVEYED PLOTTED TEMPLATE AREAS CHECKED	BY	DATE

ORIGINAL SURVEY NOTE BOOK NO.	SURVEYED PLOTTED TEMPLATE AREAS CHECKED	BY	DATE

595  
590  
585  
580  
575  
570  
565  
560

595  
590  
585  
580  
575  
570  
565  
560



25 + 50.00

150 140 130 120 110 100 90 80 70 60 50 40 30 20 10 0 10 20 30 40 50 60 70 80 90 100 110 120 130 140 150

FILE NAME = S:\Projects\403-00072_57-70\vdgr\M_Keller\keshl.BK.dgn	USER NAME = bse@bel	DESIGNED - JWS	REVISED -	<b>STATE OF ILLINOIS DEPARTMENT OF TRANSPORTATION</b>	<b>BIKE TRAIL CROSS SECTIONS</b>		F.A.I. RTE. 57/70	SECTION (25-3,4)R	COUNTY EFFINGHAM	TOTAL SHEETS 1098	SHEET NO. 689
PLOT SCALE = 20.0000' / IN.	PLOT DATE = 3/14/2011	DRAWN - LEC	REVISED -		SCALE: 1"=10'	SHEET NO. 19 OF 40 SHEETS	STA. 25+50.00 TO STA. 25+50.00	FED. ROAD DIST. NO.	ILLINOIS FED. AID PROJECT	CONTRACT NO. 74299	
CHECKED - BRM	DATE - 11-22-10	REVISOR -	REVISOR -								