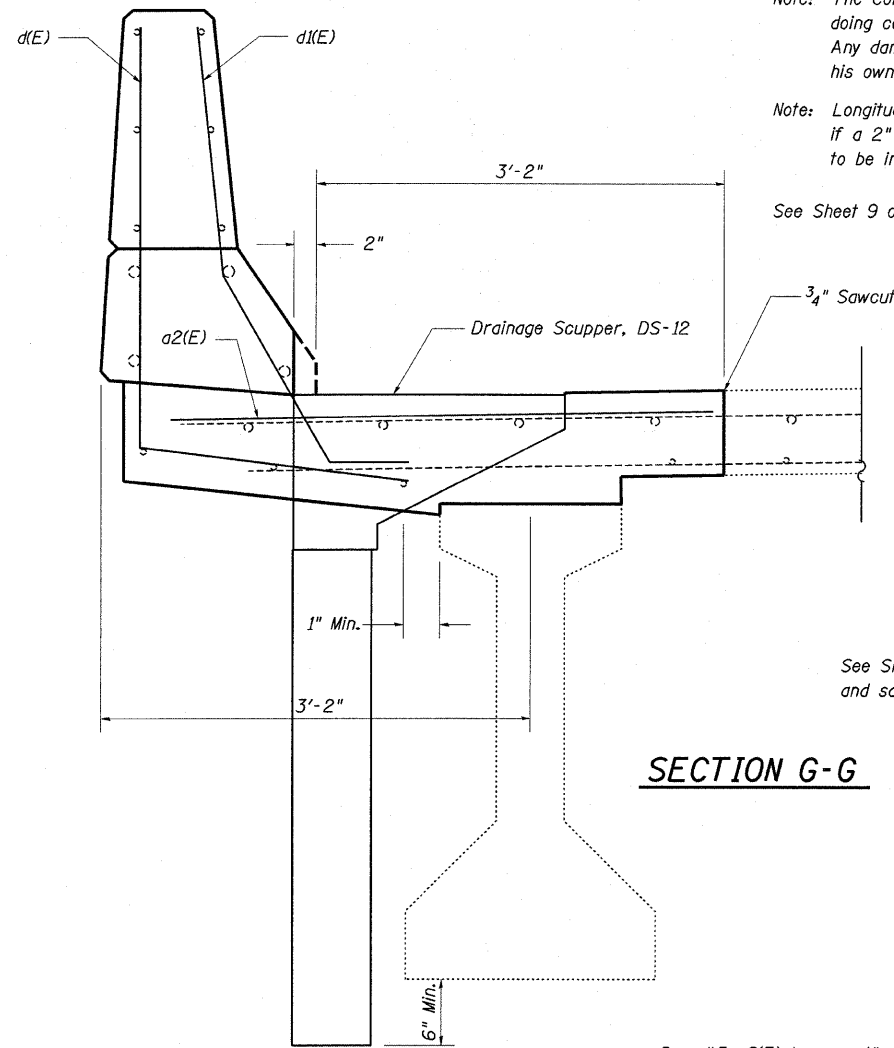


Note: The Contractor shall exercise extreme care while doing concrete removal operations over the beams. Any damage is to be repaired by the Contractor his own expense.

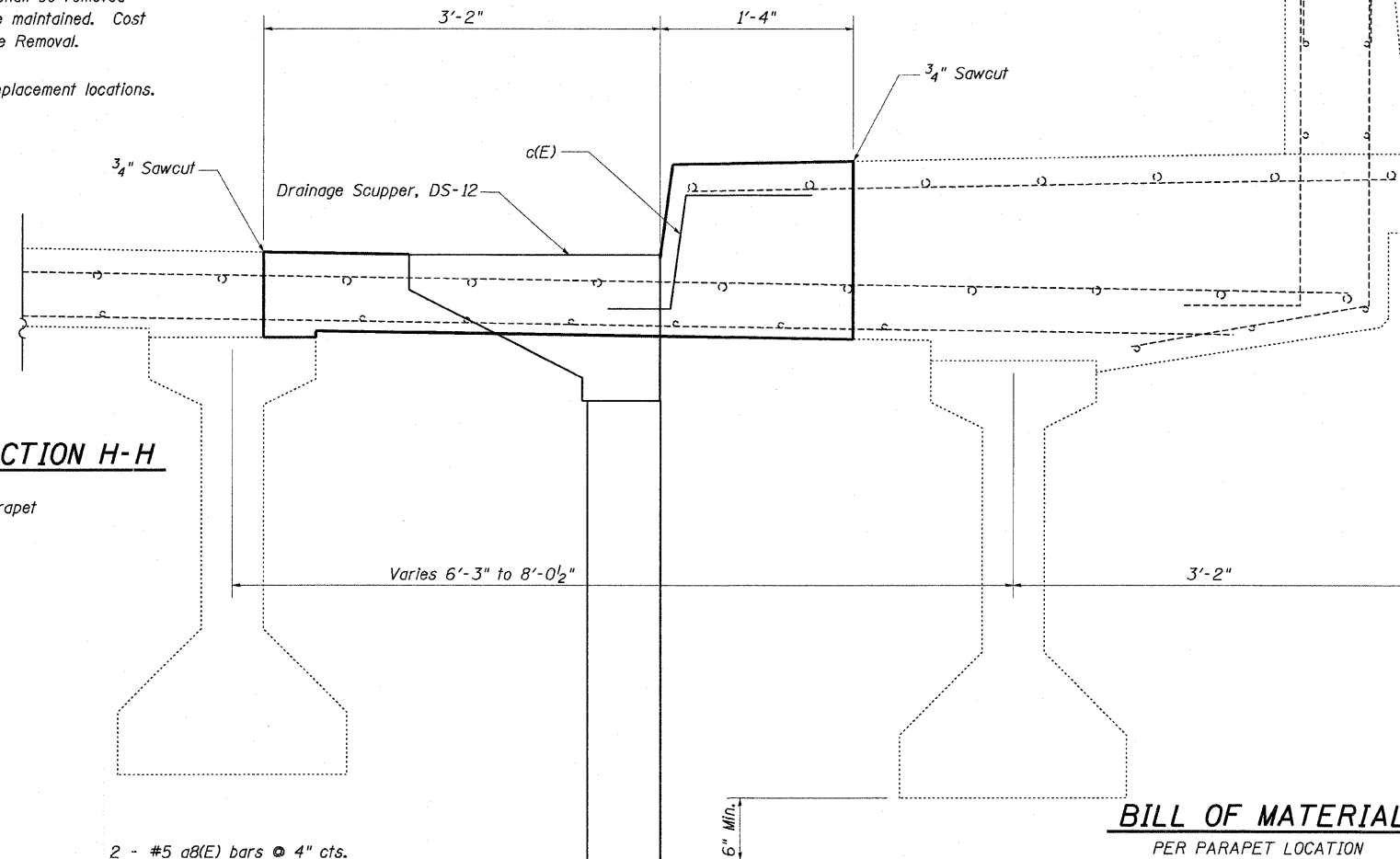
Note: Longitudinal reinforcement shall be removed if a 2" clearance cannot be maintained. Cost to be included with Concrete Removal.

See Sheet 9 of 13 for scupper replacement locations.

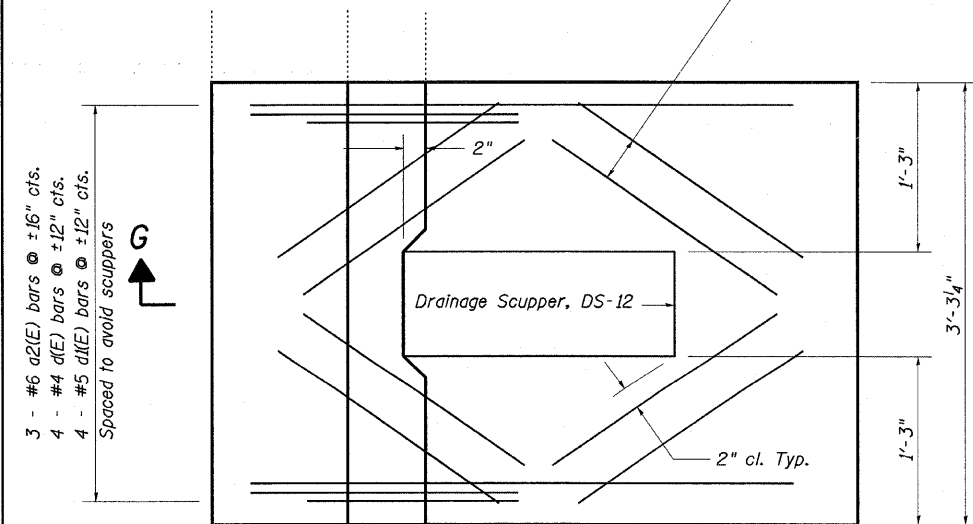


SECTION G-G

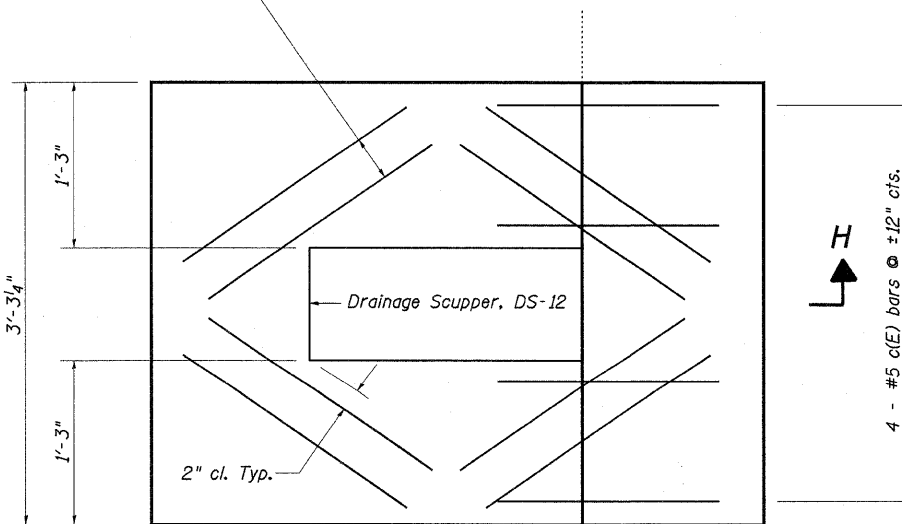
See Sheet 7 of 13 for parapet and safety walk details.



SECTION H-H



PLAN



PLAN

BILL OF MATERIAL

PER PARAPET LOCATION

BAR	TOTAL	SIZE	LENGTH	SHAPE
a2(E)	3	#6	4'-0"	—
a8(E)	8	#5	2'-0"	—
d(E)	4	#4	5'-1"	└
d(E)	4	#5	4'-0"	└
REINF. BARS (EP. COATED)			POUND	60
CONCRETE REMOVAL			CU YD	0.74
CONC. SUPERSTRUCTURE			CU YD	0.74

BILL OF MATERIAL

PER SAFETY WALK LOCATION

BAR	TOTAL	SIZE	LENGTH	SHAPE
a8(E)	8	#5	2'-0"	—
c(E)	4	#5	2'-5"	└
REINF. BARS (EP. COATED)			POUND	30
CONCRETE REMOVAL			CU YD	0.46
CONC. SUPERSTRUCTURE			CU YD	0.46

FILE NAME =
c:\pwwork\pwwork\swartzr\ad0212489\077

USER NAME = swartzr
500-sh-t-brd-tails-0580037.dgn
PLOT SCALE = 20.0000 ' / in.
PLOT DATE = 10/13/2011

DESIGNED - KLB
DRAWN - KLB
CHECKED - MEA
DATE - 08/16/11

REVISED -
REVISED -
REVISED -
REVISED -

STATE OF ILLINOIS
DEPARTMENT OF TRANSPORTATION

DRAINAGE SCUPPER REPLACEMENT DETAILS
SN. 058-0037

SCALE: NA SHEET NO. 10 OF 13 SHEETS STA. TO STA.

F.A.P. RTE.	SECTION	COUNTY	TOTAL SHEETS	SHEET NO.
716	*	Macon	98	89
ILLINOIS FED. AID PROJECT			CONTRACT NO. 74500	

*(12TR,RS-2)(13OR-2,RS-1)