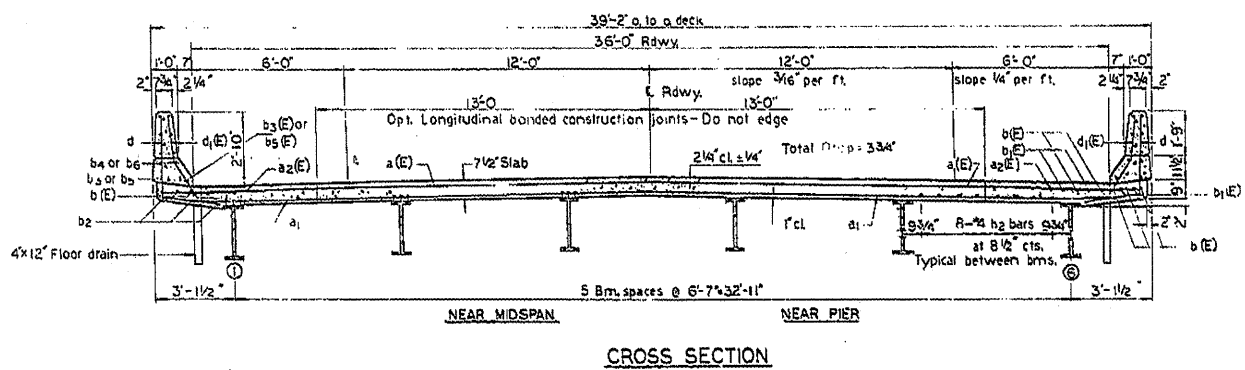
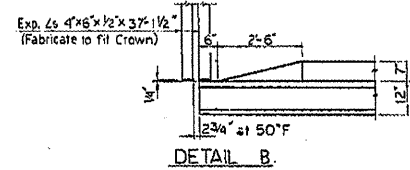
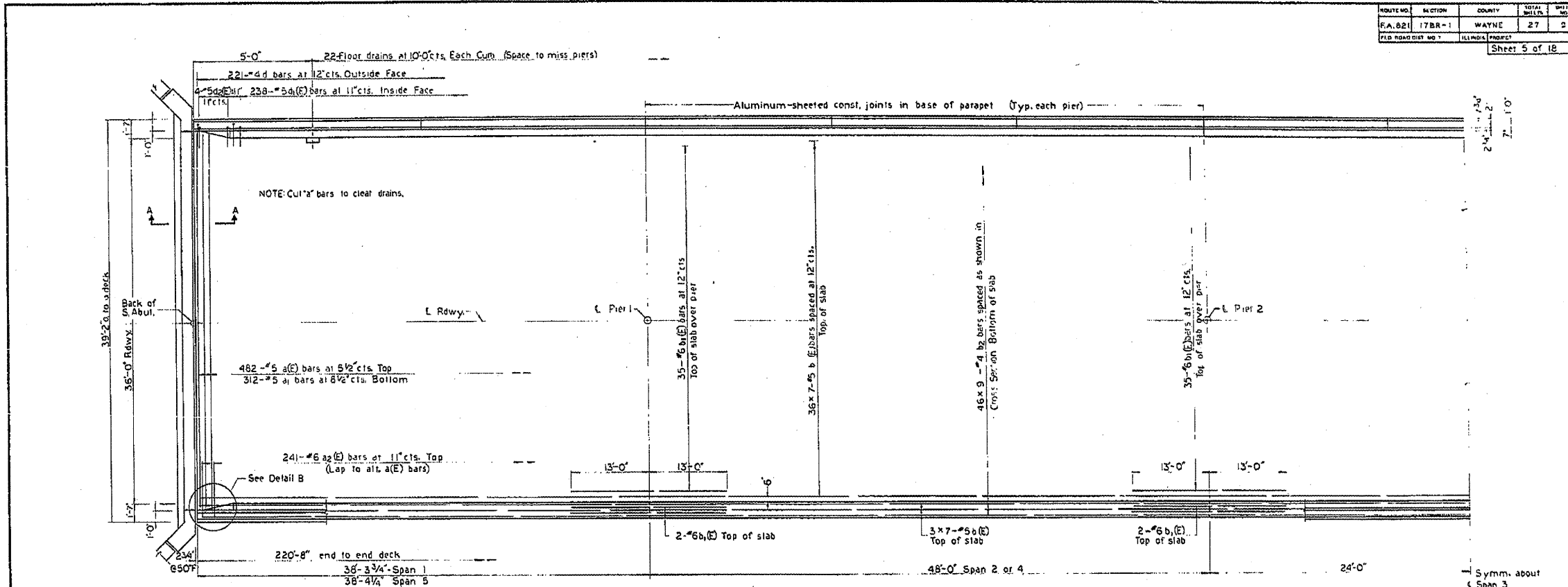
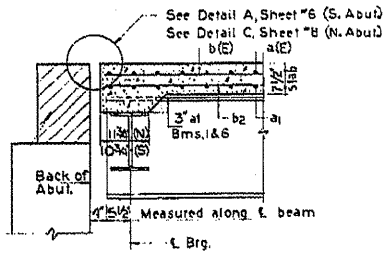


| | | | | |
|---------------------|---------|------------------|---------------|-------|
| ROUTE NO. | SECTION | COUNTY | SHEET NO. | SHEET |
| F.A. 821 | 17BR-1 | WAYNE | 27 | 2 |
| FIELD ROAD DIST NO. | | ILLINOIS PROJECT | Sheet 5 of 18 | |



Min. Lap Length
 #4 bars 1'-4"
 #5 bars 1'-8"
 #8 bars 3'-0"



Hatched area to be poured after superstructure forms have been removed. Quantity of Class X Conc. included with Superstructure.

SECTION A-A

NOTES:
 See sheet #6 for Superstructure details and Bill of Materials. Reinforcement bars designated (E) shall be epoxy-coated. See Special Provisions.
 Bars shown thus 36x7-#5 etc, indicate 36 lines of bars with 7 lengths per line.

UNIT I
 SUPERSTRUCTURE
 F.A. RT 821 SEC 17BR-1
 WAYNE COUNTY
 STA. 957+95.03

MTA, INCORPORATED
 DESIGNED [Signature] CHECKED [Signature] DATE 11-5-77 NO. 0701

9 of 16
 74529