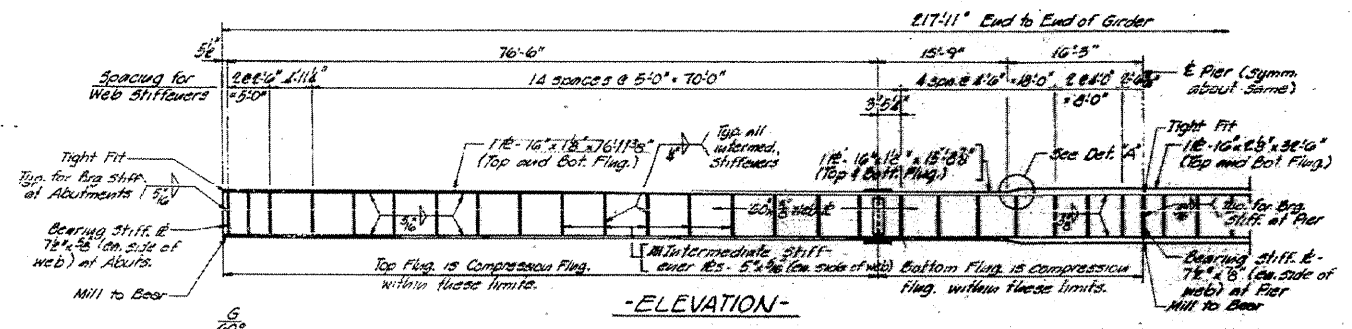
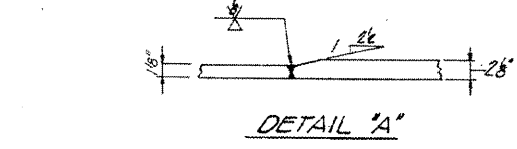


-FRAMING PLAN-
 Symm. about line E of Pier
 by 130° Rotation



-ELEVATION-

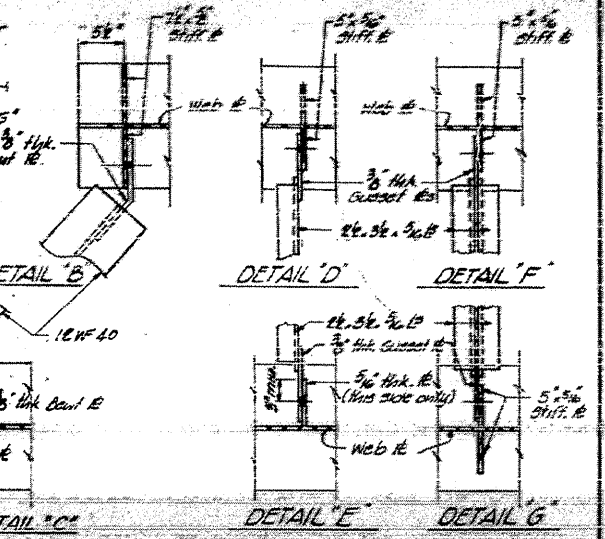


DETAIL 'A'

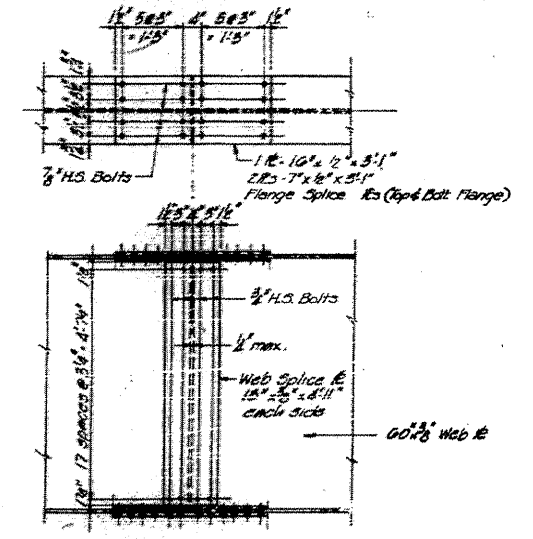
Beam No.	Area (sq. ft.)
1-9	241.845
2-8	221.601
3-7	201.149
4-6	181.870
5	162.030

Beam No.	Area (sq. ft.)	Pier
R-8 (R)	24.5	106.6
R-E (R)	26.0	81.5
Imp. (R)	10.0	17.5
R total (R)	106.4	205.6

Beam No.	Area (sq. ft.)	Pier
7 (L)	20.350	72.350
8 (L)	1.50	1.30
10 (L)	9.50	22.1
11 (L)	9.18	10.95
Imp. (L)	1.96	2.55
12 (L)	20.50	35.64
13 (L)	19.0	19.1



CROSS FRAME CONNS. TO GIRDER (See Sp. No. 10 for add'l. details)



-SPLICE DETAIL-

STRUCTURAL STEEL DETAILS			
SECTION	DATE	BY	CHECKED
1			
2			
3			
4			
5			
6			
7			
8			
9			
10			
11			
12			
13			
14			
15			
16			
17			
18			
19			
20			
21			
22			
23			
24			
25			
26			
27			
28			
29			
30			

K/8/16
 74529