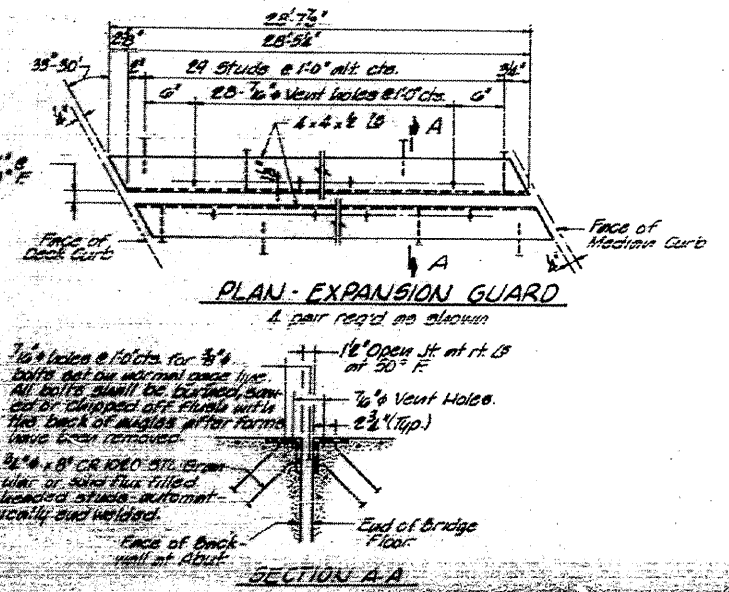
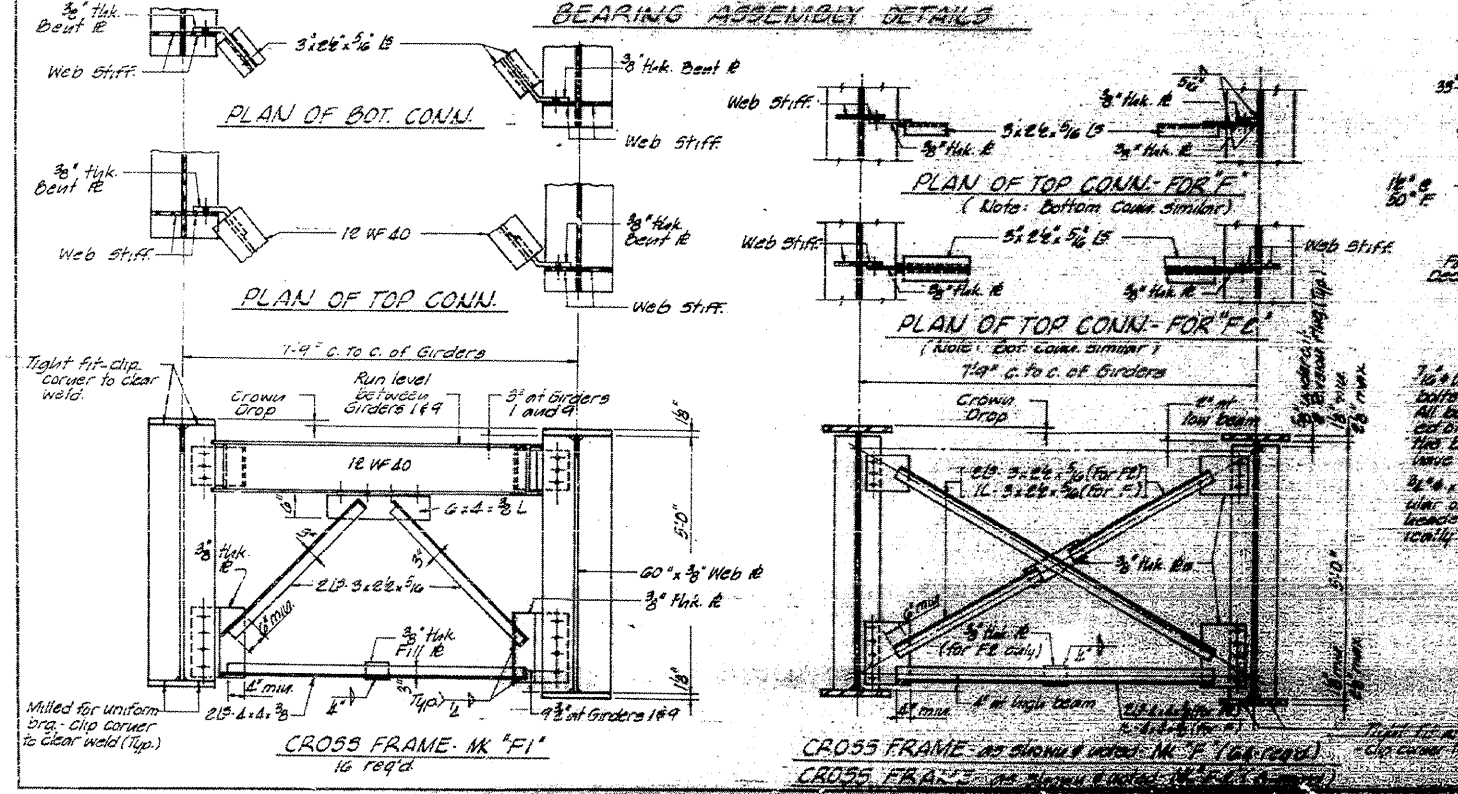


**NOTES ON SETTING OF ANCHOR BOLTS AT END BEARS**

D\* = 1/8" per 100' of expansion for every 10° fall below normal temperature of 50° F.

D\*\* = 1/8" per 100' of expansion for every 10° rise above normal temperature of 50° F.

After beams have been erected and dimensions of 1/8" of clearance, holes shall be drilled and anchor bolts shall be placed in place. All fixed anchor bolts may be built into the masonry.



**STRUCTURAL STEEL DETAILS**

1/2" holes @ 10' cts for 3/4" bolts set on internal gage line. All bolts shall be burled, sand or clipped off flange with flat deck of angles after forms have been removed.

3/4" x 8" CR 1080 ATL. Bracing or sand flux filled headed studs automatically and welded.

Face of Back wall of Abut.