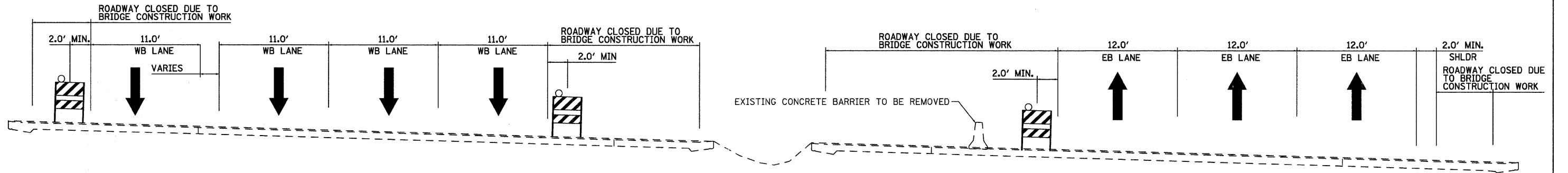


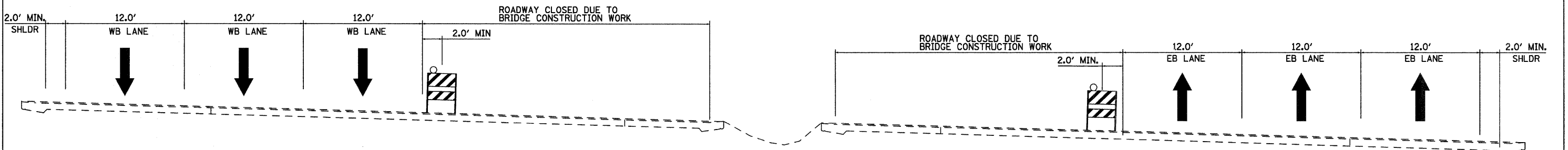
STAGE 1

INTERSTATE 64 STATION 238+07.12 TO STATION 254+80.40



STAGE 1 / STAGE 1A

INTERSTATE 64 STATION 262+49.27 TO STATION 271+47.20



STAGE 1A

INTERSTATE 64 STATION 214+02.34 TO STATION 259+82.14

FILE NAME = D876415-sh1-Typical Roadway.dgn

USER NAME = tbonnell
 PLOT SCALE = 5,0000' / 1in.
 PLOT DATE = 11/18/2011

DESIGNED -	REVISED -
DRAWN -	REVISED -
CHECKED -	REVISED -
DATE -	REVISED -

**STATE OF ILLINOIS
 DEPARTMENT OF TRANSPORTATION**

**SUGGESTED STAGES OF CONSTRUCTION AND
 TRAFFIC CONTROL - TYPICAL SECTIONS**

SCALE: 1"=5' SHEET NO. 1 OF 2 SHEETS STA. TO STA.

F.A.I. RTE.	SECTION	COUNTY	TOTAL SHEETS	SHEET NO.
64	82-(3,4)RS	ST. CLAIR	167	33
CONTRACT NO. 76415				
FED. ROAD DISTRICT 8 ILLINOIS FED. AID PROJECT				