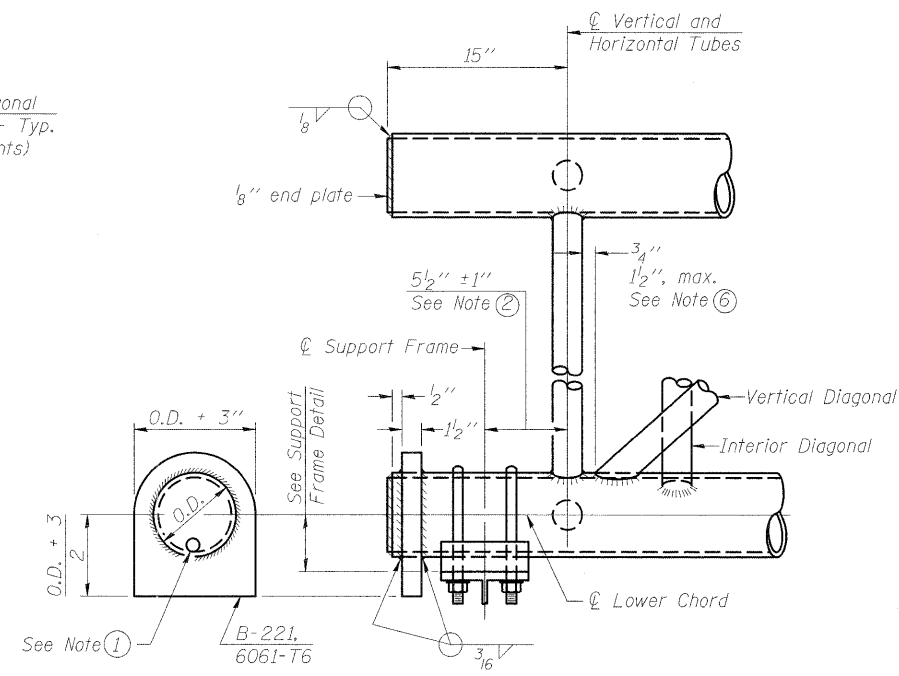
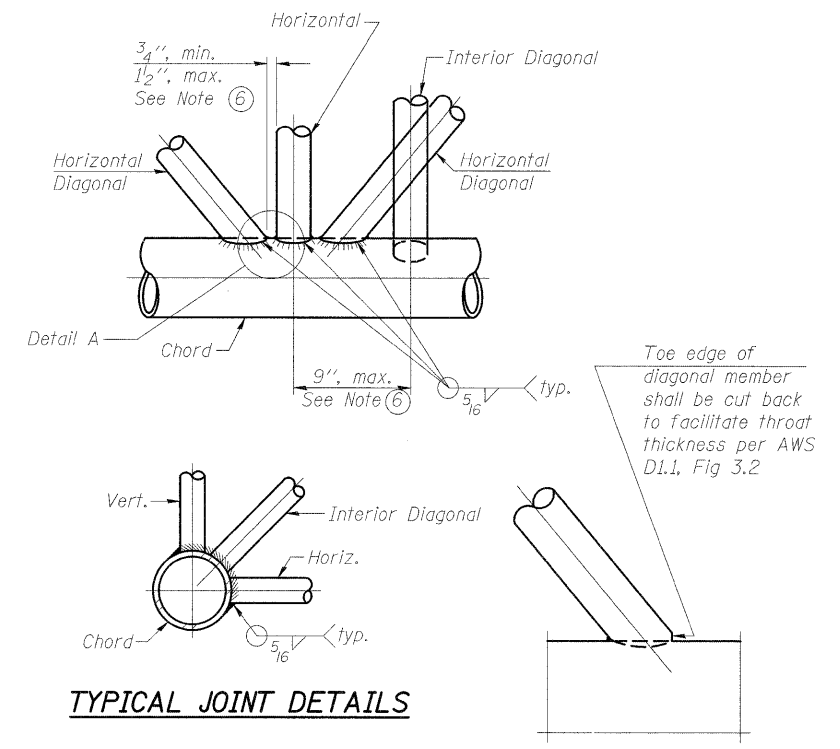


ELEVATION
TYPICAL INTERIOR UNIT

Even number of panels/interior unit required.

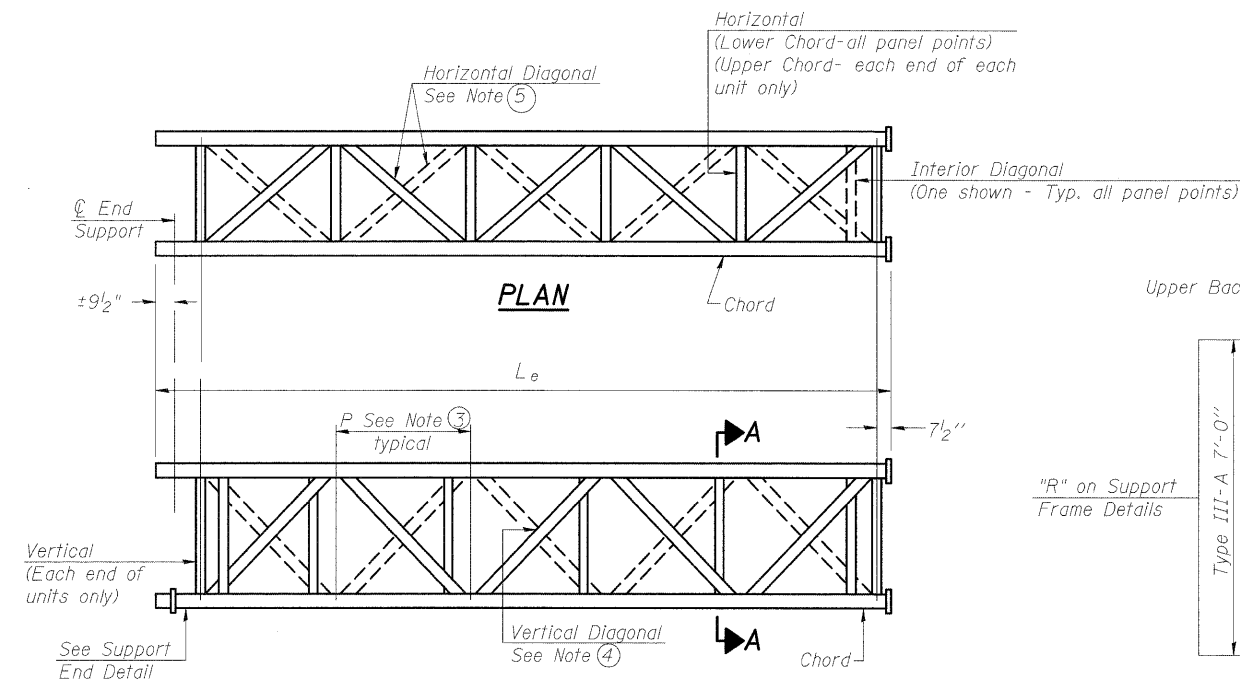


SUPPORT END DETAIL FOR EXTERIOR UNIT



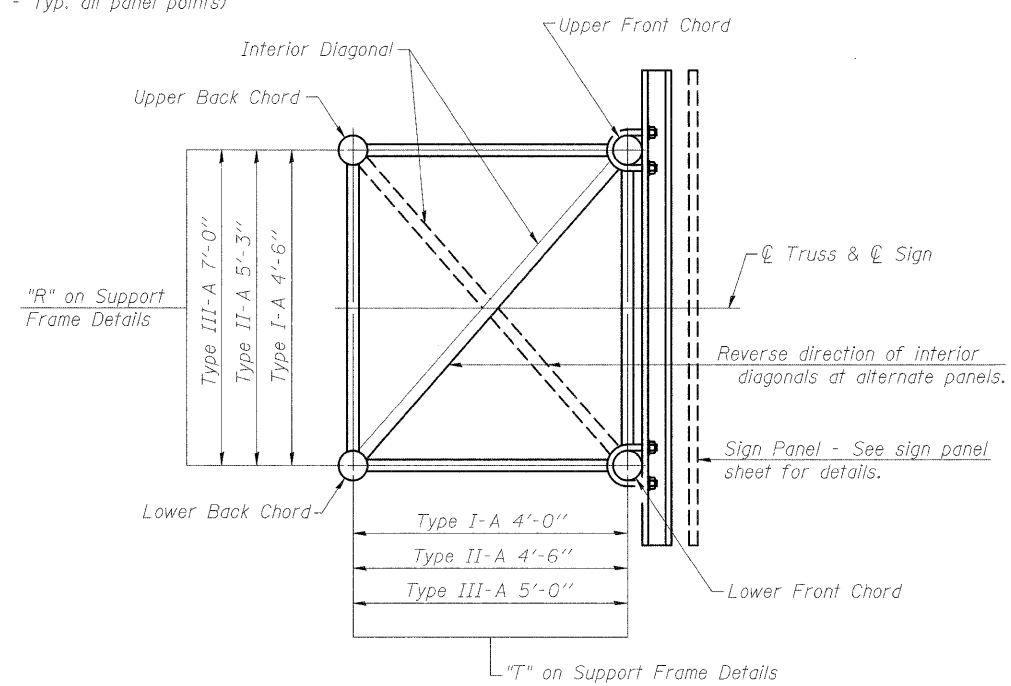
TYPICAL JOINT DETAILS

DETAIL A



ELEVATION
TYPICAL EXTERIOR UNIT

Even or odd number of panels/exterior units allowed.



SECTION A-A

- ① Contractor may alternatively use standard aluminum drive-fit cap to close end. 1/2" ϕ drain hole in end plate/drive-fit cap. (Typ. at ends of all chords)
- ② 5 1/2" end dimension may vary by $\pm 1"$ to provide uniform panel spacing (P).
- ③ Panel spacing (P) shall be uniform for entire truss and between 4'-0" and 5'-0" for Type I-A or 4'-0" and 5'-6" for Types II-A and III-A.
- ④ Vertical Diagonals in front and back face shall alternate.
- ⑤ Hidden lines show wind bracing alternates direction between planes of top and bottom chords.
- ⑥ All diagonals shall be detailed for minimum offset from the panel point based on the following: Offset shall be such as to provide a 3/4" minimum to 1 1/2" maximum clearance between any diagonal and any horizontal or vertical member, and to provide clearance for U-bolt connections of signs or walkway brackets.

OS-A-2

1-20-11

FILE NAME =	USER NAME = burnsideem	DESIGNED -	REVISED -
76415-shit-plan.dgn		DRAWN -	REVISED -
PLOT SCALE = 50.0000' / in.		CHECKED -	REVISED -
PLOT DATE = 10/20/2011		DATE -	REVISED -

STATE OF ILLINOIS
DEPARTMENT OF TRANSPORTATION

OVERHEAD SIGN STRUCTURES - ALUMINUM TRUSS
DETAILS FOR TRUSS TYPES I-A, II-A AND III-A

F.A.I. RTE.	SECTION	COUNTY	TOTAL SHEETS	SHEET NO.
64	82-(3,4)RS	ST. CLAIR	167	78
CONTRACT NO. 76415				

SCALE: _____ SHEET NO. ____ OF ____ SHEETS STA. _____ TO STA. _____

FED. ROAD DIST. NO. - ILLINOIS FED. AID PROJECT