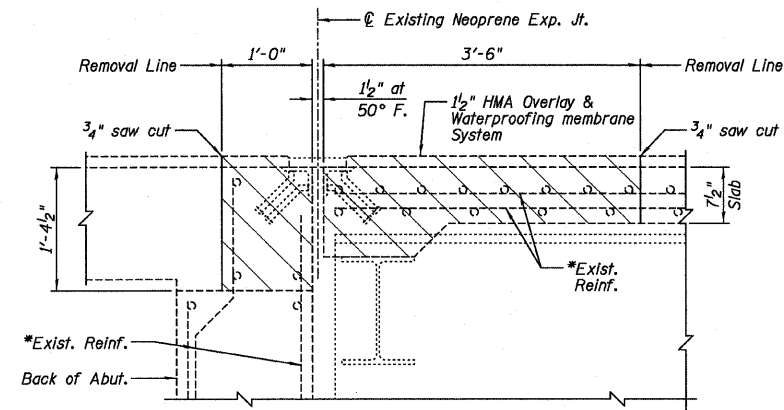
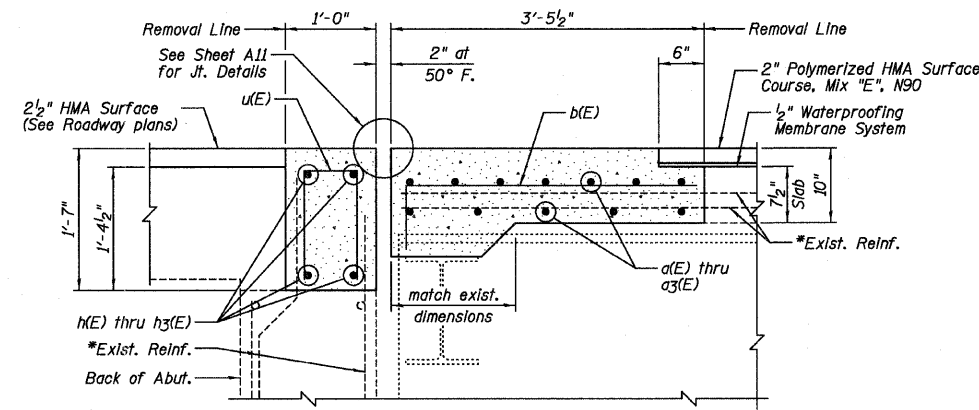


BILL OF MATERIAL

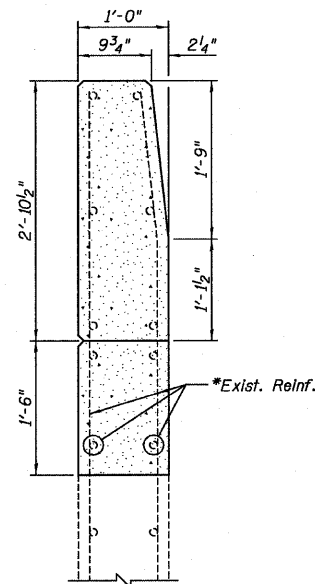
Bar	No.	Size	Length	Shape
a(E)	12	#5	39'-7"	—
a1(E)	12	#5	47'-10"	—
a2(E)	12	#5	39'-5"	—
a3(E)	12	#5	37'-10"	—
a4(E)	16	#6	6'-6"	—
b(E)	172	#5	4'-4"	—
d(E)	7	#4	5'-2"	L
d1(E)	2	#5	3'-11"	L
d2(E)	12	#5	4'-4"	L
d3(E)	7	#4	5'-2"	L
h(E)	4	#5	39'-3"	—
h1(E)	4	#5	47'-9"	—
h2(E)	4	#5	39'-1"	—
h3(E)	4	#5	37'-5"	—
u(E)	167	#4	3'-2"	—
Item	Unit	Quantity		
Concrete Removal	Cu. Yd.	27.3		
Concrete Superstructure	Cu. Yd.	32.1		
Reinforcement Bars, Epoxy Coated	Pound	4,140		
Bar Splicers	Each	32		



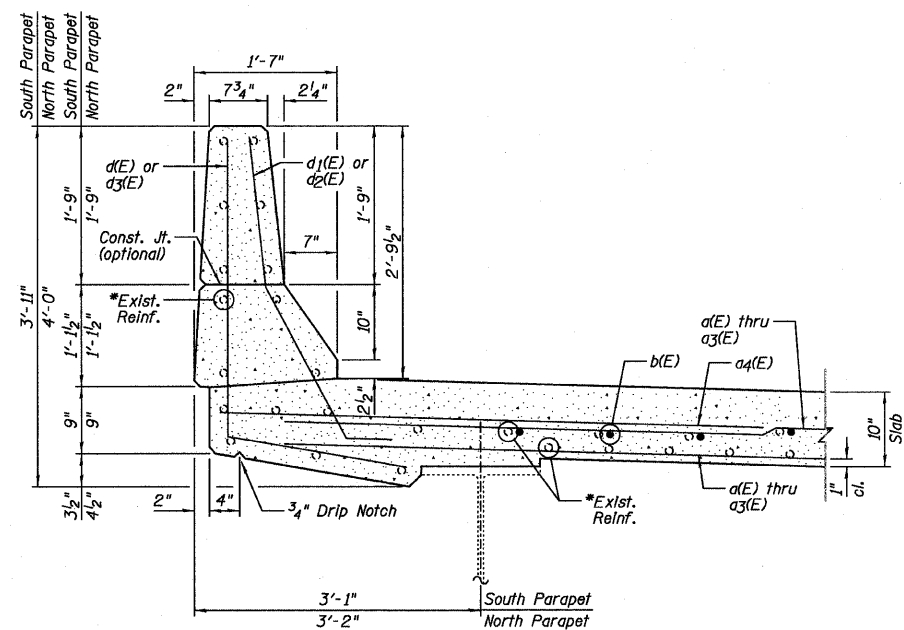
SECTION A-A
(Horizontal Dimensions • Rt. L's)



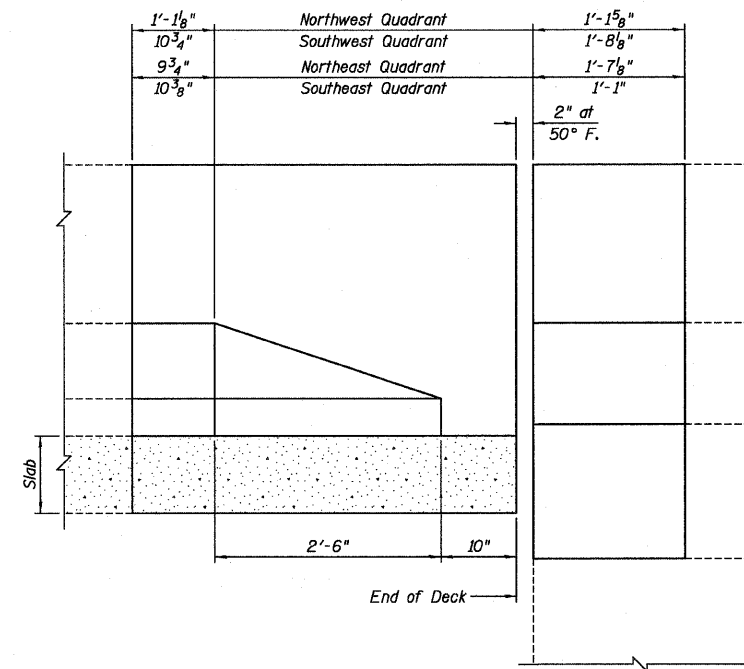
SECTION B-B
(Horizontal Dimensions • Rt. L's)



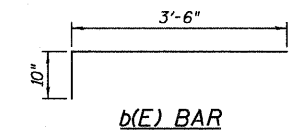
SECTION THRU WINGWALL



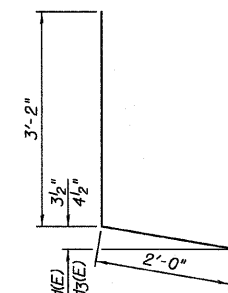
SECTION THRU PARAPET



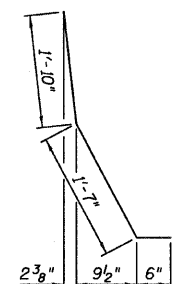
INSIDE FACE PARAPET ELEVATION
(Dimensions measured along inside face of parapet)



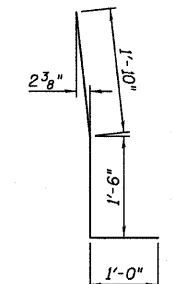
b(E) BAR



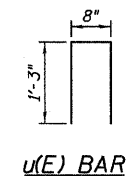
d(E) & d3(E) BAR



d1(E) BAR



d2(E) BAR



u(E) BAR

NOTES:

- *Existing reinforcement extending into the removal area shall be cleaned, straightened and incorporated into the new construction. Any reinforcement bars that are damaged during concrete removal shall be replaced with an approved bar splicer or anchorage system. Cost shall be included with Concrete Removal.
- For location of Section A-A and B-B, see Sheet A7.

Farnsworth GROUP, INC.
2709 McGraw Drive
Schaumburg, Illinois 60194
308663-8435, 308663-1571 fax

DESIGNED - JCZ
CHECKED - JML
DRAWN - DJM/JWK
DATE - 12/05/11

REVISOR
REVISOR
REVISOR
REVISOR

**STATE OF ILLINOIS
DEPARTMENT OF TRANSPORTATION**

**JOINT REPLACEMENT DETAILS, EASTBOUND ROADWAY
STRUCTURE NO. 082-0167 (E.B.)
STRUCTURE NO. 082-0168 (W.B.)**

SHEET NO. A8 OF 21 SHEETS

F.A.I. RTE.	SECTION	COUNTY	TOTAL SHEETS	SHEET NO.
64	82-(3,4)RS	ST. CLAIR	167	108
				CONTRACT NO. 76415
ILLINOIS FED. AID PROJECT				