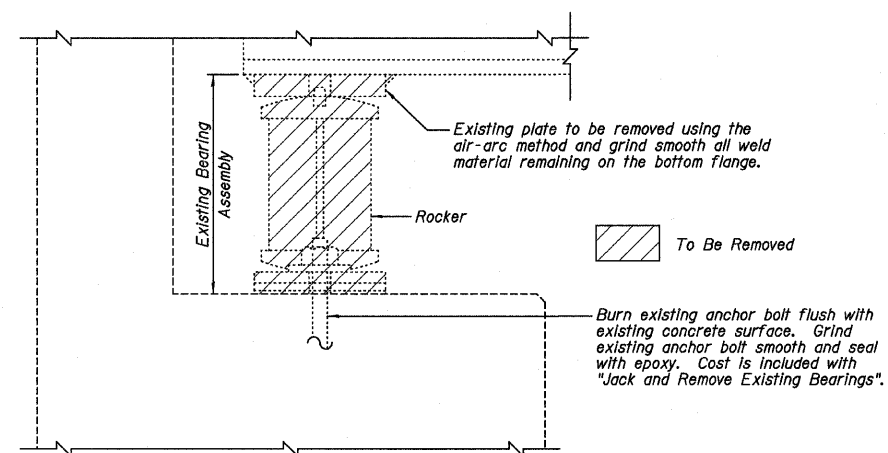
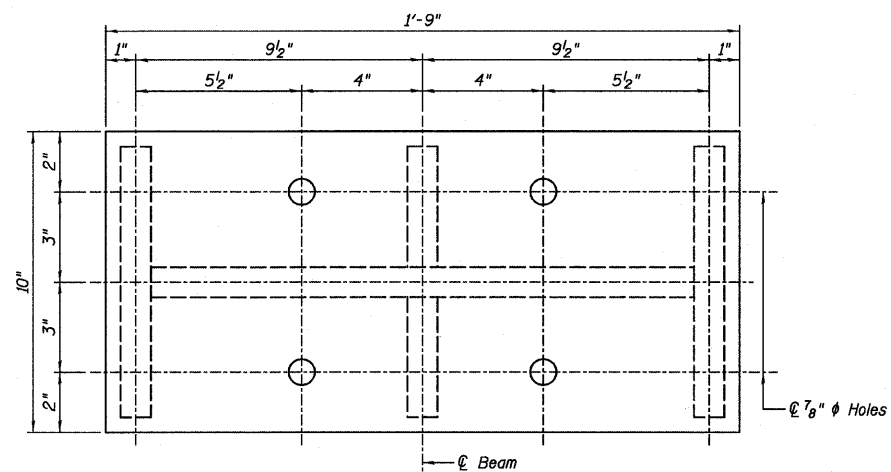


Interior Beam Reaction Table (E.B.)		
	West Abut.	East Abut.
R_p (k)	45	37
R_t (k)	39	39
Imp. (k)	9	9
R total (k)	93	85

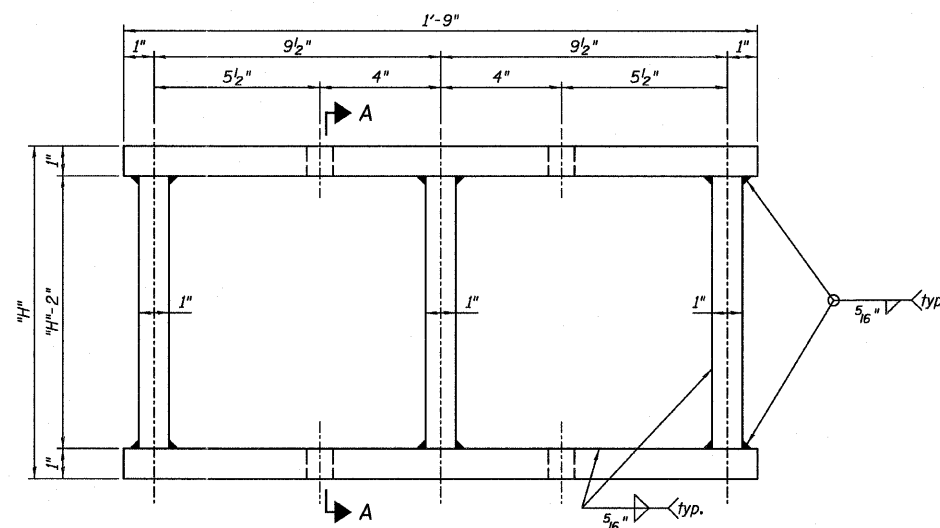
Interior Beam Reaction Table (W.B.)		
	West Abut.	East Abut.
R_p (k)	42	35
R_t (k)	39	38
Imp. (k)	9	9
R total (k)	90	82



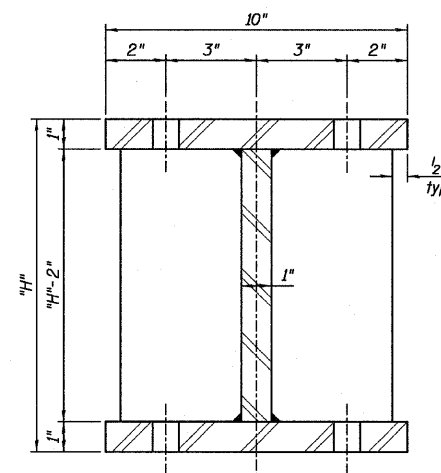
EXISTING BEARING REMOVAL DETAIL



PLAN STEEL EXTENSION



ELEVATION STEEL EXTENSION



SECTION A-A

Dimension "H" (in.)		
Beam No.	West Abut.	East Abut.
1-3	9 1/16"	6 1/2"
4-11	8 9/16"	6"
12-13	9 1/16"	6 1/2"
14-21	8 9/16"	6"
22-24	9 1/16"	6 1/2"

BILL OF MATERIAL

ITEM	UNIT	082-0167	082-0168	TOTAL
Furnishing and Erecting Structural Steel	Pound	4,460	4,460	8,920
Jack And Remove Existing Bearings	Each	24	24	48

NOTES:

- 1.) Prior to ordering any material, the Contractor shall verify in the field all bearing heights and shim thickness dimensions.
- 2.) For location of Steel Extensions see Sheet A13 and A14.

Farnsworth
GROUP, INC.
2709 McGraw Drive
Bloomington, Illinois 61704
309/663-9435, 309/663-1571 fax

DESIGNED - JCZ
CHECKED - JML
DRAWN - DJM/JWK
DATE - 12/05/11

REVIS
REVIS
REVIS
REVIS

STATE OF ILLINOIS
DEPARTMENT OF TRANSPORTATION

BEARING DETAILS AND NOTES
STRUCTURE NO. 082-0167 (E.B.)
STRUCTURE NO. 082-0168 (W.B.)

F.A.I. RTE.	SECTION	COUNTY	TOTAL SHEETS	SHEET NO.
64	82-(3,4)RS	ST. CLAIR	167	112
CONTRACT NO. 76415				
ILLINOIS FED. AID PROJECT				

SHEET NO. A12 OF 21 SHEETS