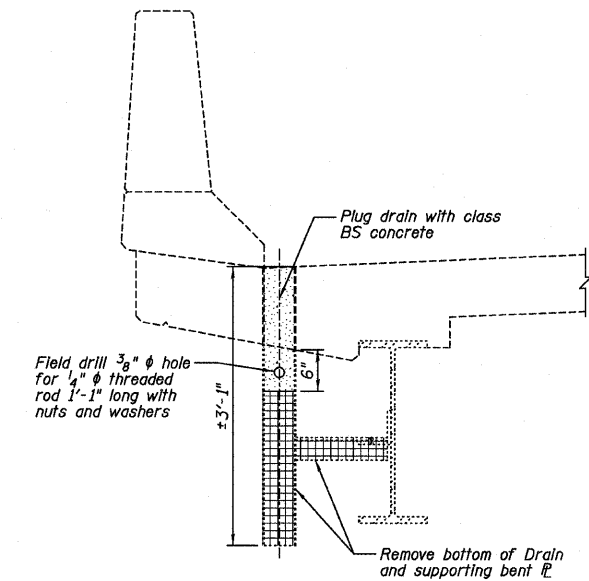
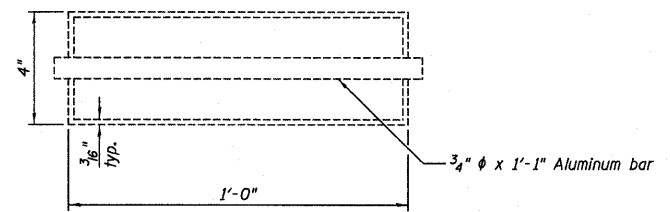


TOP OF DECK PLAN



DRAIN ELIMINATION DETAIL



TOP PLAN OF DRAIN

LEGEND

- Deck Slab Repair (Partial)
- Concrete Removal for Expansion Joint Replacement (see Sheets B10 thru B12)
- Longitudinal Joint Closure (see Sheets B17 thru B19)
- 4" Core Hole (see "Bridge Deck Microsilica Concrete Overlay" Special Provisions for repair requirements)

BILL OF MATERIAL

ITEM	UNIT	TOTAL
Plug Existing Deck Drains	Each	10
* Deck Slab Repair (Partial)	Sq. Yd.	251

\* FOR INFORMATION ONLY

NOTE:

All dimensions to deck slab repair areas are from the face of parapet to the location shown unless noted otherwise.

**Farnsworth GROUP, INC.**  
2709 McGraw Drive  
Bloomington, Illinois 61704  
309/663-8435, 309/663-1571 fax

DESIGNED - JCZ  
CHECKED - JML  
DRAWN - DJM/JWK  
DATE - 12/05/11

REVIS  
REVIS  
REVIS  
REVIS

REVIS  
REVIS  
REVIS  
REVIS

STATE OF ILLINOIS  
DEPARTMENT OF TRANSPORTATION

TOP OF DECK REPAIR, WESTBOUND ROADWAY  
STRUCTURE NO. 082-0169 (E.B.)  
STRUCTURE NO. 082-0170 (W.B.)

SHEET NO. 07 OF 34 SHEETS

F.A.I. RTE.	SECTION	COUNTY	TOTAL SHEETS	SHEET NO.
64	82-(3,4)RS	ST. CLAIR	167	128
CONTRACT NO. 76415				
ILLINOIS FED. AID PROJECT				