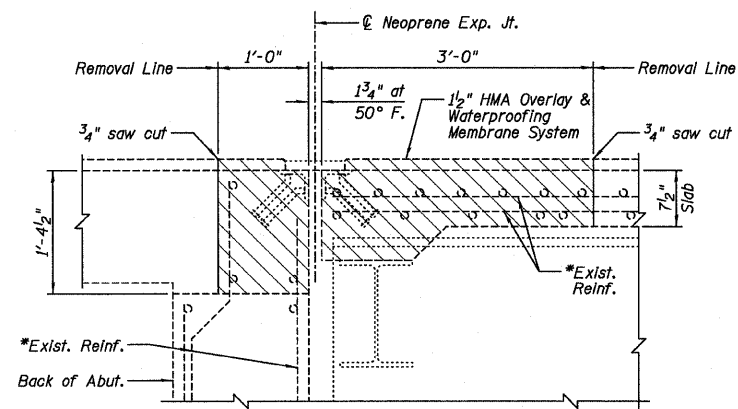
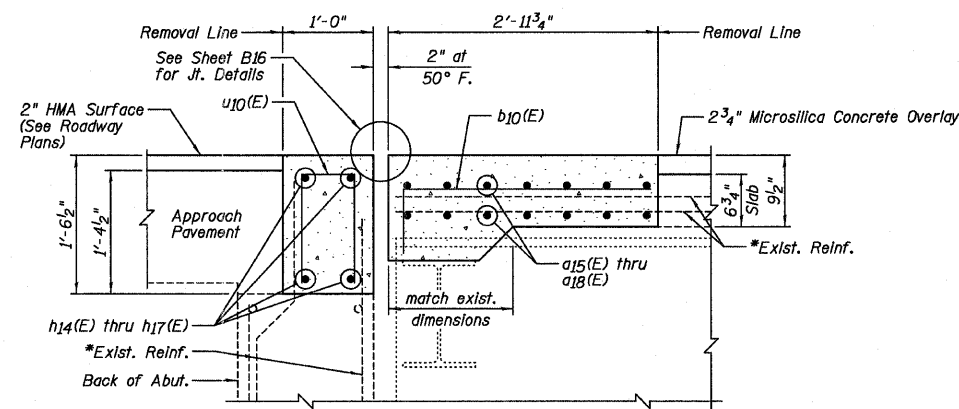


BILL OF MATERIAL

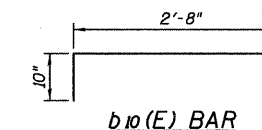
Bar	No.	Size	Length	Shape
a14(E)	16	#6	6'-6"	—
a15(E)	28	#5	18'-10"	—
a16(E)	28	#5	30'-6"	—
a17(E)	28	#5	28'-11"	—
a18(E)	28	#5	30'-9"	—
b10(E)	221	#5	3'-6"	—
d10(E)	6	#4	5'-9"	L
d11(E)	12	#5	4'-1"	L
d13(E)	6	#4	4'-9"	L
h14(E)	8	#5	17'-10"	—
h15(E)	8	#5	29'-7"	—
h16(E)	8	#5	28'-10"	—
h17(E)	8	#5	30'-10"	—
u10(E)	214	#4	3'-2"	—
Item	Unit	Quantity		
Concrete Removal	Cu. Yd.	32.6		
Concrete Superstructure	Cu. Yd.	37.5		
Reinforcement Bars, Epoxy Coated	Pound	5,590		
Bar Splicers	Each	72		



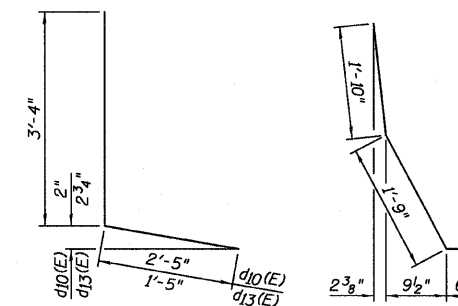
SECTION A-A
(Horizontal Dimensions @ Rt. L's)



SECTION B-B
(Horizontal Dimensions @ Rt. L's)

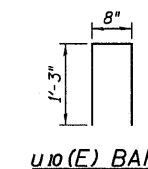


b10(E) BAR

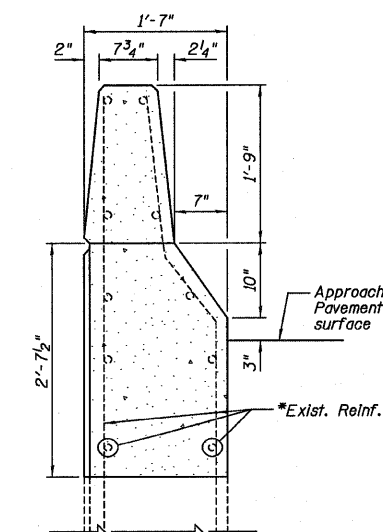


d10(E) & d13(E) BAR

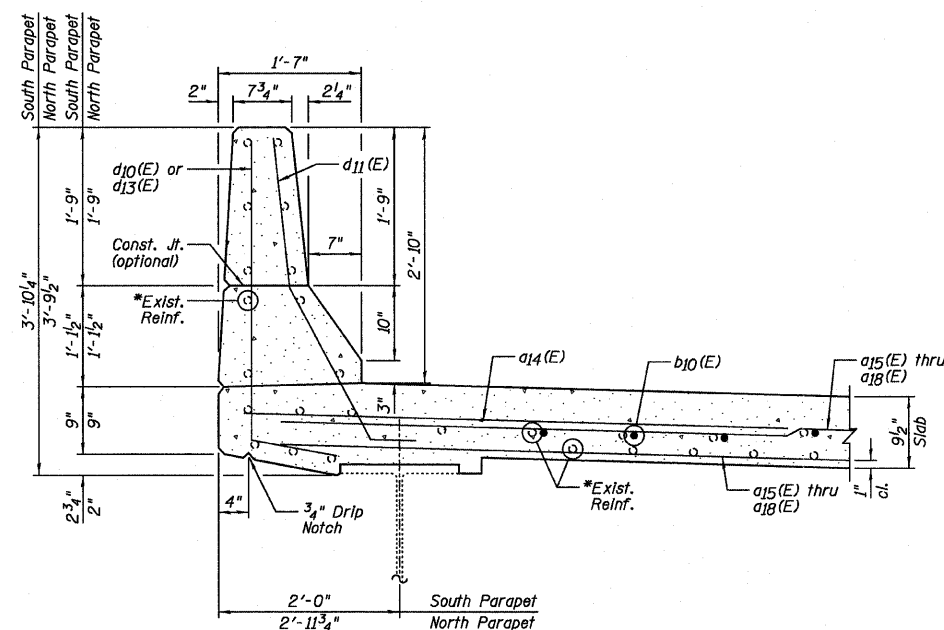
d11(E) BAR



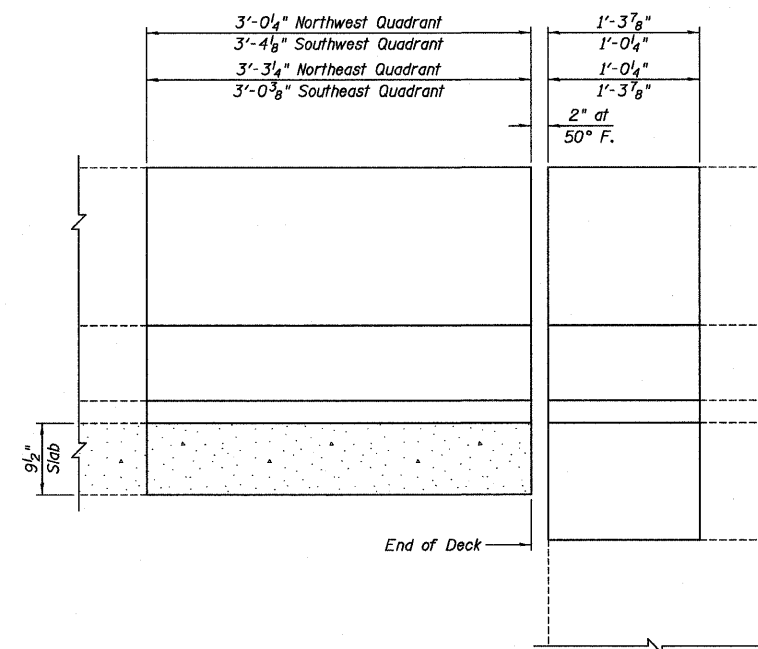
u10(E) BAR



SECTION THRU WINGWALL



SECTION THRU PARAPET



INSIDE FACE PARAPET ELEVATION
(Dimensions measured along inside face of parapet)

NOTES:

- Hatched areas indicate concrete sections to be removed. Perimeters of concrete removal areas shall be saw cut 3/4" prior to the removal of the concrete.
- Existing reinforcement extending into the removal area shall be cleaned, straightened and incorporated into the new construction. Any reinforcement bars that are damaged during concrete removal shall be replaced with an approved bar splicer or anchorage system. Cost shall be included with Concrete Removal.
- For location of Section A-A, see Sheet B13. For location of Section B-B, see Sheet B14.

Farnsworth
GROUP, INC.
2709 McGraw Drive
Bloomington, Illinois 61704
309/663-8435, 309/663-1571 fax

DESIGNED - JCZ
CHECKED - JML
DRAWN - DJM/JWK
DATE - 12/05/11

REVIS
REVIS
REVIS
REVIS

STATE OF ILLINOIS
DEPARTMENT OF TRANSPORTATION

EXPANSION JOINT REPLACEMENT DETAILS, WESTBOUND ROADWAY
STRUCTURE NO. 082-0169 (E.B.)
STRUCTURE NO. 082-0170 (W.B.)

SHEET NO. B15 OF 34 SHEETS

F.A.I. RTE.	SECTION	COUNTY	TOTAL SHEETS	SHEET NO.
64	82-(3,4)RS	ST. CLAIR	167	136
				CONTRACT NO. 76415
ILLINOIS FED. AID PROJECT				