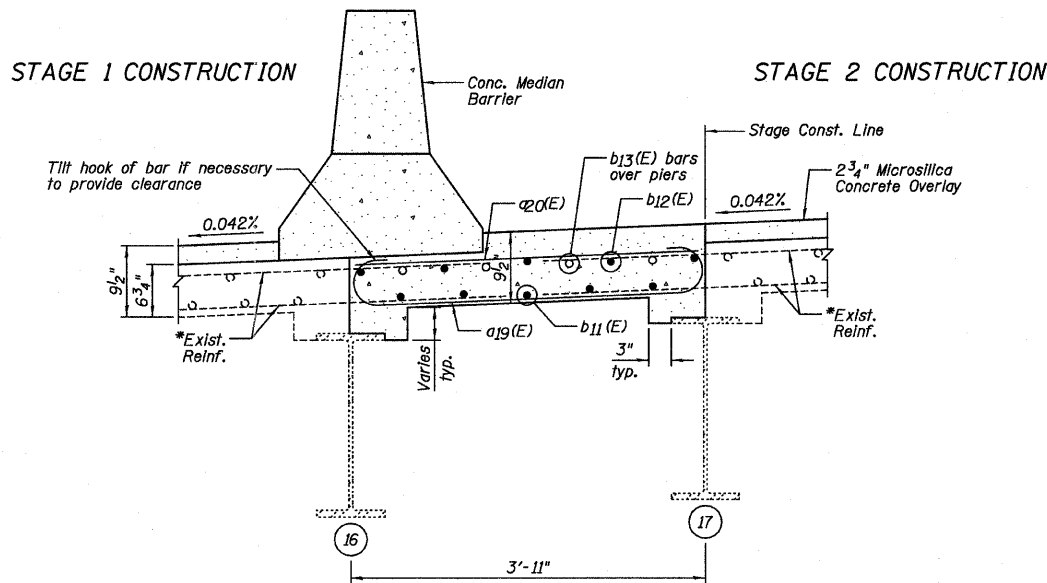
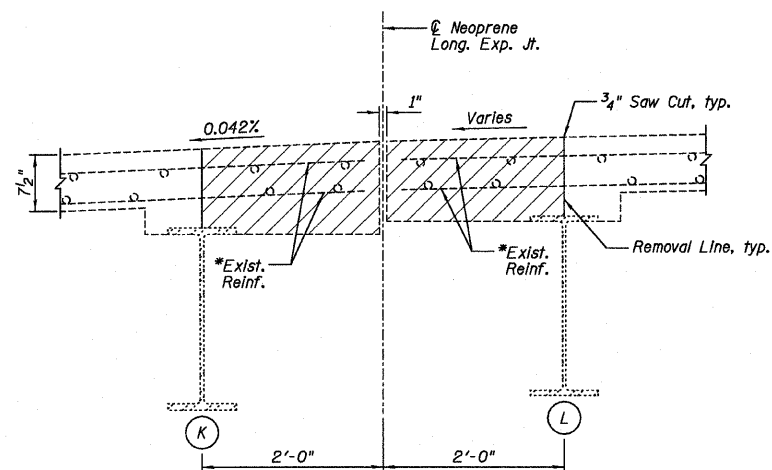


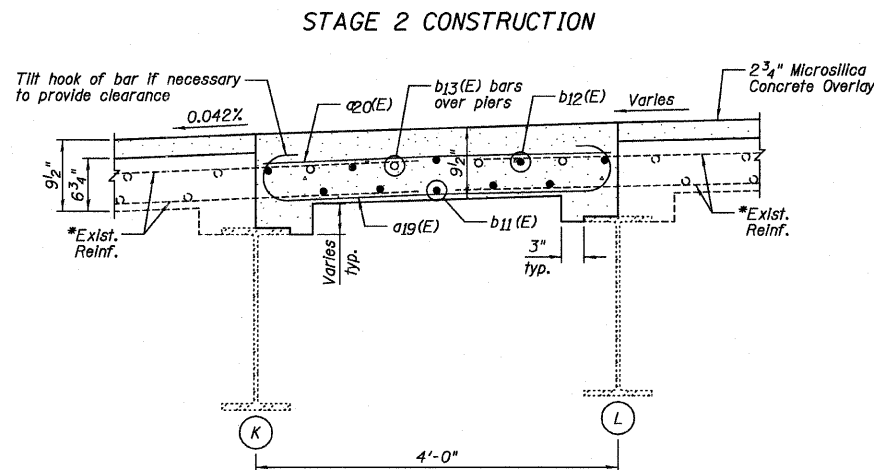
**SECTION A-A**  
(Horizontal Dimensions @ Rt. L's)  
(Existing 1/2" HMA Overlay & Waterproofing Membrane System not shown.)



**SECTION B-B**  
(Horizontal Dimensions @ Rt. L's)  
See Sheet B9 for Concrete Median Barrier Reinforcement)



**SECTION C-C**  
(Horizontal Dimensions @ Rt. L's)  
(Existing 1/2" HMA Overlay & Waterproofing Membrane System not shown.)

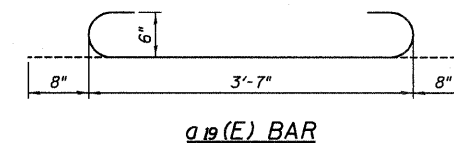


**SECTION D-D**  
(Horizontal Dimensions @ Rt. L's)

**TWO JOINT CLOSURES**  
**BILL OF MATERIAL**

Bar	No.	Size	Length	Shape
a19(E)	182	#6	4'-11"	U
a20(E)	182	#6	3'-7"	U
b11(E)	30	#5	38'-7"	—
b12(E)	40	#5	29'-6"	—
b13(E)	16	#6	13'-6"	—
<b>Item</b>				
<b>Unit</b>				
<b>Quantity</b>				
Concrete Removal	Cu. Yd.	26.5		
Concrete Superstructure	Cu. Yd.	26.0		
Reinforcement Bars, Epoxy Coated	Pound	5,090		

Note: The quantities listed are for the Longitudinal Joint Closures only.



**NOTES:**

- Hatched areas indicate concrete sections to be removed. Perimeters of concrete removal areas shall be saw cut 3/4" prior to the removal of the concrete.
- Existing reinforcement extending into the removal area shall be cleaned, straightened and incorporated into the new construction. Any reinforcement bars that are damaged during concrete removal shall be replaced with an approved bar splicer or anchorage system. Cost shall be included with Concrete Removal.
- For location of Sections A-A and B-B, see Sheet B17. For location of Sections C-C and D-D, see Sheet B18.
- For Median Barrier Details and Bill of Material, see Sheet B9.

**Farnsworth**  
GROUP, INC.  
2709 McGraw Drive  
Schaumburg, Illinois 61104  
309/963-8435, 309/963-1571 fax

DESIGNED - JCZ	REVISION
CHECKED - JML	REVISION
DRAWN - DJM/JWK	REVISION
CHECKED - MSW	REVISION

DATE - 12/05/11

**STATE OF ILLINOIS**  
**DEPARTMENT OF TRANSPORTATION**

**LONGITUDINAL JOINT CLOSURE DETAILS, EASTBOUND ROADWAY**  
**STRUCTURE NO. 082-0169 (E.B.)**  
**STRUCTURE NO. 082-0170 (W.B.)**

SHEET NO. B19 OF 34 SHEETS

F.A.I. RTE.	SECTION	COUNTY	TOTAL SHEETS	SHEET NO.
64	82-03,41RS	ST. CLAIR	167	140
CONTRACT NO. 76415				
ILLINOIS FED. AID PROJECT				