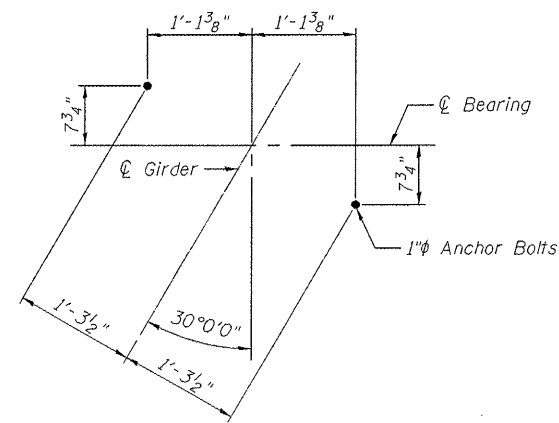


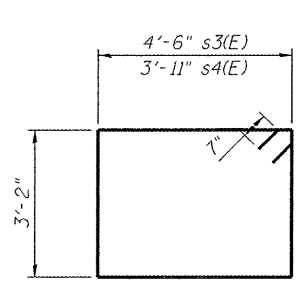
SECTION THRU EAST ABUT.



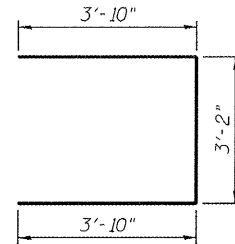
ANCHOR BOLT LAYOUT EAST ABUTMENT

NOTES

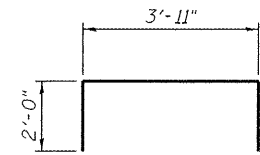
* Pile liners shall be included in the cost of "Furnishing Steel Piles HP12x53"



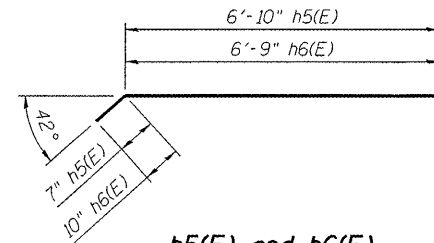
s3(E) and s4(E)



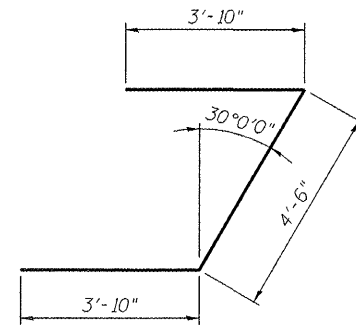
u4(E)



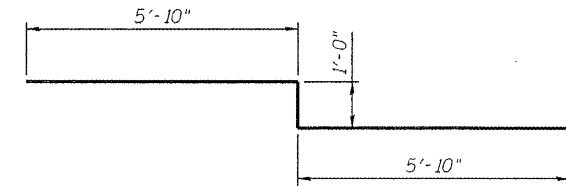
s5(E)



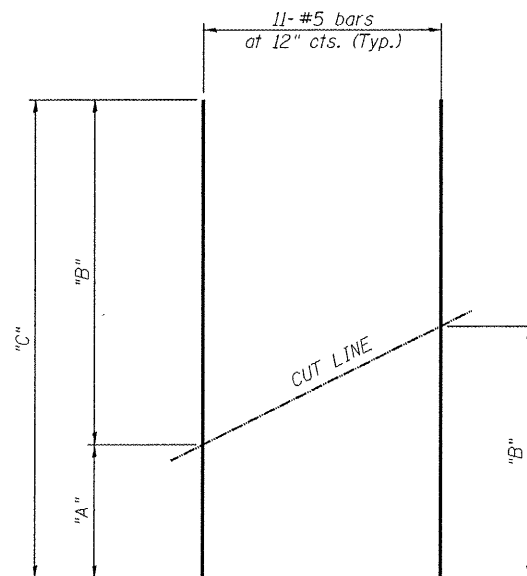
h5(E) and h6(E)



u2(E)



u3(E)



Bar	"A"	"B"	"C"
v2(E)	9'-9"	12'-0"	21'-9"
v3(E)	7'-5"	12'-0"	19'-5"

FIELD CUTTING DIAGRAM

Order v2(E) and v3(E) full length. Cut as shown and use remainder of bars in opposite face.

**EAST ABUTMENT EASTBOUND
BILL OF MATERIAL**

Bar	No.	Size	Length	Shape
h(E)	16	#5	10'-0"	—
h1(E)	14	#8	17'-6"	—
h2(E)	12	#5	13'-1"	—
h3(E)	16	#5	7'-1"	—
p(E)	16	#7	19'-6"	—
p1(E)	8	#5	17'-11"	—
p2(E)	4	#5	14'-9"	—
p3(E)	4	#7	25'-9"	—
p4(E)	8	#5	8'-0"	—
p5(E)	4	#5	21'-5"	—
p7(E)	8	#5	18'-6"	—
p14(E)	8	#7	15'-10"	—
s3(E)	2	#5	16'-6"	□
s4(E)	55	#5	15'-4"	□
s5(E)	43	#5	7'-11"	┌
u2(E)	8	#6	12'-2"	┌
u3(E)	4	#7	12'-8"	┌
v1(E)	18	#5	10'-9"	—
v2(E)	11	#5	21'-9"	—
Concrete Structures		Cu. Yd.	40.4	
Reinforcement Bars, Epoxy Coated		Pound	4550	
Furnishing Steel Piles HP12x53		Foot	744	
Driving Piles		Foot	744	
Test Pile Steel HP12x53		Each	1	

**EAST ABUTMENT WESTBOUND
BILL OF MATERIAL**

Bar	No.	Size	Length	Shape
h1(E)	7	#8	17'-6"	—
h2(E)	6	#5	13'-1"	—
h4(E)	16	#5	10'-9"	—
h5(E)	12	#5	7'-5"	—
h6(E)	12	#5	7'-7"	—
p2(E)	4	#5	14'-9"	—
p3(E)	4	#7	25'-9"	—
p4(E)	8	#5	8'-0"	—
p5(E)	4	#5	21'-5"	—
p6(E)	16	#7	20'-1"	—
p7(E)	8	#5	18'-6"	—
p14(E)	8	#7	15'-10"	—
s3(E)	2	#5	16'-6"	□
s4(E)	55	#5	15'-4"	□
s5(E)	43	#5	7'-11"	┌
u2(E)	8	#6	12'-2"	┌
u3(E)	4	#7	12'-8"	┌
u4(E)	5	#6	10'-10"	┌
v1(E)	18	#5	10'-9"	—
v3(E)	11	#5	19'-5"	—
Concrete Structures		Cu. Yd.	40.0	
Reinforcement Bars, Epoxy Coated		Pound	4300	
Furnishing Steel Piles HP12x53		Foot	744	
Driving Piles		Foot	744	
Test Pile Steel HP12x53		Each	1	

For details of piles see sheet S-40 of S-51.

FILE NAME = 082011h-0120-76884-035-EastAbutment.tbl.dgn



USER NAME = hrakm	DESIGNED - MJK	REVISED - 1/6/2012 MJK
PLOT SCALE = 2:0.0000' / IN.	CHECKED - SAB	REVISED -
PLOT DATE = 1/6/2012	DRAWN - MJK	REVISED -
	CHECKED - SAB	REVISED -

STATE OF ILLINOIS
DEPARTMENT OF TRANSPORTATION

EAST ABUTMENT DETAILS
STRUCTURE NO. 082-0119 (E.B.) & 082-0120 (W.B.)

SHEET NO. S-35 OF S-51 SHEETS

F.A.P. RTE.	SECTION	COUNTY	TOTAL SHEETS	SHEET NO.
103	27-1-VHB-1	ST. CLAIR	277	212
CONTRACT NO. 76884			ILLINOIS FED. AID PROJECT	