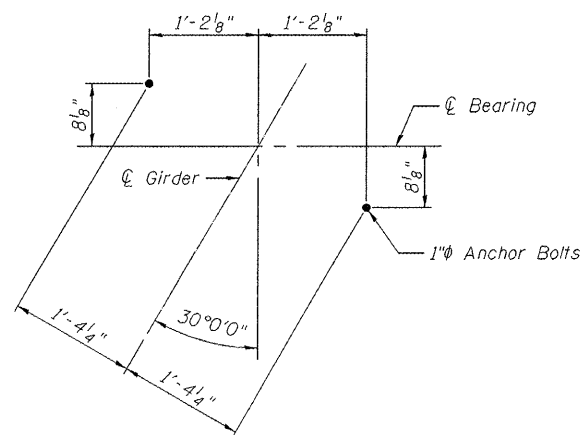


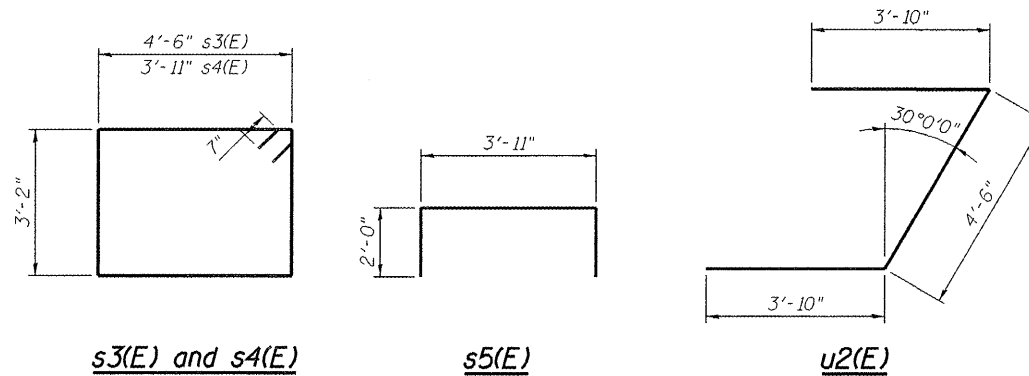
SECTION THRU WEST ABUT.



ANCHOR BOLT LAYOUT WEST ABUTMENT

NOTES

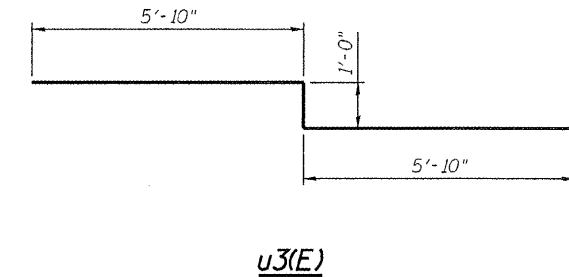
* Pile liners shall be included in the cost of "Furnishing Steel Piles HP12x53"



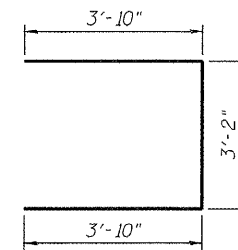
s3(E) and s4(E)

s5(E)

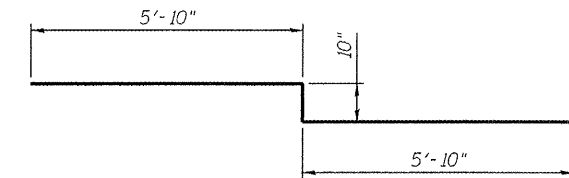
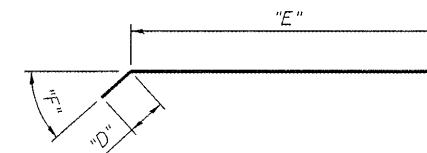
u2(E)



u3(E)



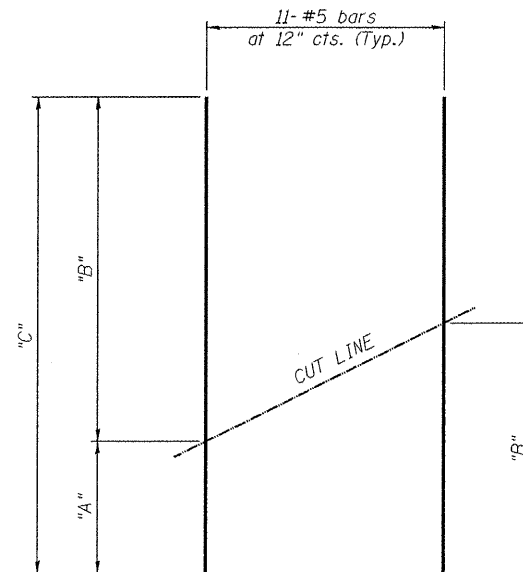
u4(E)



u5(E)

Bar	"D"	"E"	"F"
h7(E)	0'-11"	6'-3"	45°
h8(E)	1'-2"	6'-2"	45°
h9(E)	0'-7"	6'-8"	44°
h10(E)	0'-10"	6'-6"	44°

h7(E), h8(E), h9(E) and h10(E)



Bar	"A"	"B"	"C"
v4(E)	6'-0"	10'-7"	16'-7"
v6(E)	8'-3"	10'-6"	18'-9"

FIELD CUTTING DIAGRAM

Order v4(E) and v6(E) full length. Cut as shown and use remainder of bars in opposite face.

WEST ABUTMENT EASTBOUND BILL OF MATERIAL

Bar	No.	Size	Length	Shape
h1(E)	7	#8	17'-6"	—
h2(E)	5	#5	13'-1"	—
h4(E)	16	#5	10'-9"	—
h7(E)	13	#5	7'-2"	—
h8(E)	13	#5	7'-4"	—
p2(E)	4	#5	14'-9"	—
p8(E)	16	#7	19'-0"	—
p9(E)	8	#5	17'-5"	—
p10(E)	4	#7	26'-10"	—
p11(E)	4	#5	23'-7"	—
p12(E)	8	#5	8'-9"	—
p13(E)	8	#7	16'-6"	—
s3(E)	2	#5	16'-6"	□
s4(E)	55	#5	15'-4"	□
s5(E)	43	#5	7'-11"	┌
u2(E)	8	#6	12'-2"	┌
u3(E)	4	#7	12'-8"	┌
u4(E)	5	#6	10'-10"	┌
v4(E)	11	#5	16'-7"	—
v5(E)	18	#5	11'-6"	—
Concrete Structures		Cu. Yd.	39.1	
Reinforcement Bars, Epoxy Coated		Pound	4270	
Furnishing Steel Piles HP12x53		Foot	744	
Driving Piles		Foot	744	
Test Pile Steel HP12x53		Each	1	

WEST ABUTMENT WESTBOUND BILL OF MATERIAL

Bar	No.	Size	Length	Shape
h(E)	16	#5	10'-0"	—
h1(E)	7	#8	17'-6"	—
h2(E)	5	#5	13'-1"	—
h9(E)	13	#5	7'-3"	—
h10(E)	13	#5	7'-4"	—
p2(E)	4	#5	14'-9"	—
p8(E)	16	#7	19'-0"	—
p9(E)	8	#5	17'-5"	—
p10(E)	4	#7	26'-10"	—
p11(E)	4	#5	23'-7"	—
p12(E)	8	#5	8'-9"	—
p13(E)	8	#7	16'-6"	—
s3(E)	2	#5	16'-6"	□
s4(E)	55	#5	15'-4"	□
s5(E)	43	#5	7'-11"	┌
u2(E)	8	#6	12'-2"	┌
u4(E)	5	#6	10'-10"	┌
u5(E)	4	#7	12'-6"	┌
v6(E)	11	#5	18'-9"	—
v7(E)	18	#5	11'-5"	—
Concrete Structures		Cu. Yd.	39.2	
Reinforcement Bars, Epoxy Coated		Pound	4280	
Furnishing Steel Piles HP12x53		Foot	780	
Driving Piles		Foot	780	
Test Pile Steel HP12x53		Each	1	

For details of piles see sheet S-40 of S-51.



USER NAME = krahm	DESIGNED - MJK	REVISION 1/6/2012 MJK
PLOT SCALE = 2:0.0000 1/2" = 1'-0"	CHECKED - SAB	REVISION -
PLOT DATE = 1/6/2012	DRAWN - MJK	REVISION -
	CHECKED - SAB	REVISION -

STATE OF ILLINOIS
DEPARTMENT OF TRANSPORTATION

WEST ABUTMENT DETAILS
STRUCTURE NO. 082-0119 (E.B.) & 082-0120 (W.B.)
SHEET NO. S-38 OF S-51 SHEETS

F.A.P. RTE.	SECTION	COUNTY	TOTAL SHEETS	SHEET NO.
103	27-1-VHB-1	ST. CLAIR	277	215
CONTRACT NO. 76884				
ILLINOIS FED. AID PROJECT				