

F.A.P. RTE.	SECTION	COUNTY	TOTAL SHEETS	SHEET NO.
103	27-1-VHB-1	ST. CLAIR	277	1
		ILLINOIS	CONTRACT NO. 76884	

STATE OF ILLINOIS
DEPARTMENT OF TRANSPORTATION

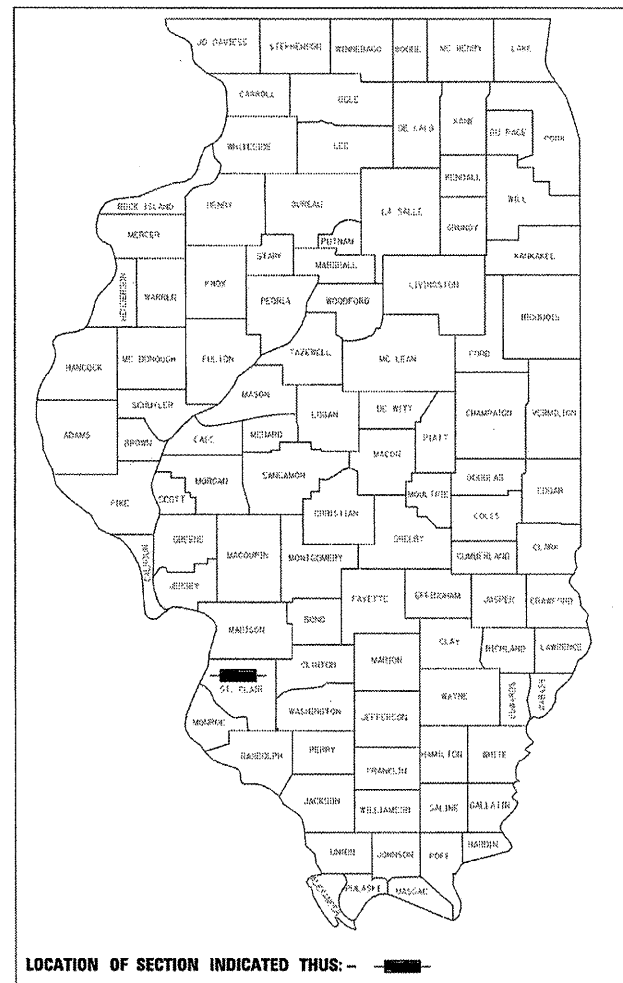
DIVISION OF HIGHWAYS

**PROPOSED
HIGHWAY PLANS**

F.A.P. ROUTE 103 (IL 15)
SECTION 27-1-VHB-1

TOTAL STRUCTURE REPLACEMENT
OVER IL ROUTE 13 AND THE IC RAILROAD
ST. CLAIR COUNTY
C-98-040-05
R8W
PROJECT ACBRF-0103(070)

D-98-021-05



LOCATION OF SECTION INDICATED THUS: - ■ -

STATE OF ILLINOIS
DEPARTMENT OF TRANSPORTATION
DIVISION OF HIGHWAYS

SUBMITTED *October 21 20 11*

James M. Roman
DEPUTY DIRECTOR OF HIGHWAYS REGION FIVE ENGINEER

December 9 20 11
Scott E. Stitt P.E./e
ENGINEER OF DESIGN AND ENVIRONMENT

December 9 20 11
William R. Freyler
DIRECTOR OF DIVISION OF HIGHWAYS CHIEF ENGINEER

PLANS PREPARED BY
STV Incorporated
engineers/architects/scientists/construction managers
Chicago, Illinois (312)553-0655

**PRINTED BY THE AUTHORITY
OF THE STATE OF ILLINOIS**

LICENSED STRUCTURAL ENGINEER
LAWRENCE I. KIRCHNER
081 005243
CHICAGO, ILLINOIS

Lawrence I. Kirchner

EXPIRES: *11/20/2012*
SEALED: *10/17/2011*
SHEETS: *BRIDGES*

55684
REGISTERED PROFESSIONAL ENGINEER OF ILLINOIS

John A. Clark

EXPIRES: *11/30/2011*
SEALED: *10/17/2011*
SHEETS: *ROADWAY*

ACTY
REGISTERED PROFESSIONAL ENGINEER

Amey M. M...

EXPIRES: *11/30/2013*
SEALED: *10/11/2011*
SHEETS: *SEQUENCE OF STAGED CONSTRUCTION & TRAFFIC CONTROL, EROSION & SEDIMENT CONTROL, DRAINAGE & UTILITIES*

STATE OF ILLINOIS
REGISTERED PROFESSIONAL ENGINEER

Thomas A. ...
081-008152

Thomas A. ...

EXPIRES: *11-30-2012*
SEALED: *10-14-2011*
SHEETS: *MSE WALLS*

FOR INDEX OF SHEETS, SEE SHEET 2.
FOR LIST OF STANDARDS, SEE SHEET 2.

DESIGN DESIGNATION

IL RTE 15
1080 (20) OTHER PRINCIPAL ARTERIAL 5.02 (PCC 20)
IL RTE 13
MINOR ARTERIAL

TRAFFIC DATA IL 15

ADT: 16600 (2011)
21800 (2031)
SU: 4.3%
MU: 5.2%

SN 082-0117 & -0118
DUAL TWO SPAN COMPOSITE GIRDER BRIDGE
OVER IC RR, TOTAL LENGTH 351'-8", WITH
SEMI-INTEGRAL PILE SUPPORTED ABUTMENTS
AND PIER WITH SUBSTRUCTURES 30 DEGREE
SKEW TO ABUTMENT.

SN 082-0119 & -0120
DUAL ONE SPAN COMPOSITE 72" BULB T-BEAM
BRIDGES OVER IL RTE 13, TOTAL LENGTH 126',
WITH SEMI-INTEGRAL PILE SUPPORTED ABUTMENTS
AND SUBSTRUCTURES 30 DEGREE SKEW TO ABUTMENT.

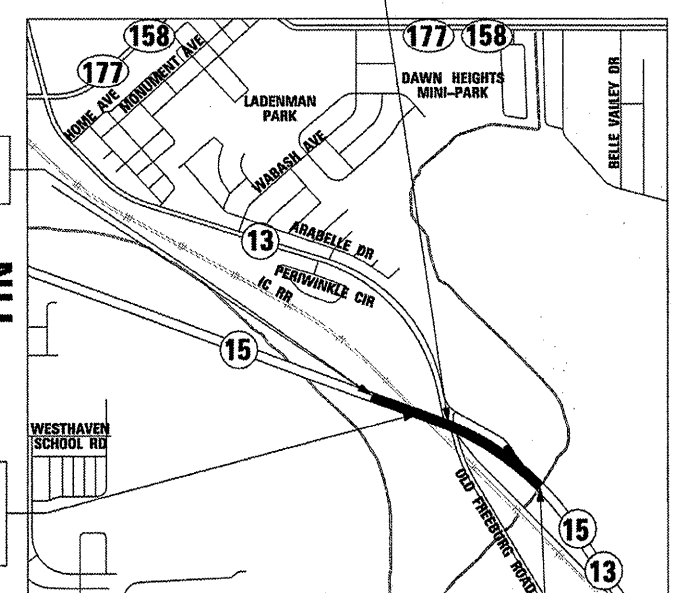
DESCRIPTION ON IMPROVEMENT

THE IMPROVEMENT CONSISTS OF CONSTRUCTION
OF FOUR BRIDGE STRUCTURES OVER IL RTE 13 AND
IC RR, FIVE MSE WALLS AND ALL ASSOCIATED
ROADWAY IMPROVEMENTS.

PROJECT BEGINS
STATION 699+00

ILLINOIS RTE 15 OVER IC RR
STRUCTURE NO. 082-0117 (E.B.)
082-0118 (W.B.)

ILLINOIS RTE 15 AT IC RR
LATITUDE: 38.49111
LONGITUDE: 89.96111

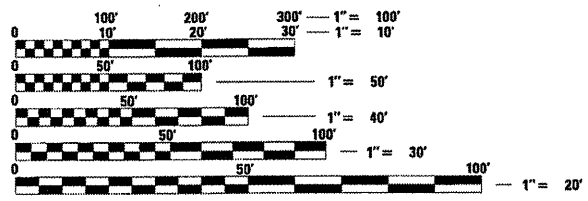


PROJECT ENDS
STATION 723+80.50

3rd PM



GROSS LENGTH OF IMPROVEMENT = 2380.5 FT = 0.451 MILES
NET LENGTH OF IMPROVEMENT = 2380.5 FT = 0.451 MILES



FULL SIZE PLANS HAVE BEEN PREPARED USING STANDARD
ENGINEERING SCALES, REDUCED SIZED PLANS WILL NOT
CONFORM TO STANDARD SCALES. IN MAKING MEASUREMENTS
ON REDUCED PLANS, THE ABOVE SCALES MAY BE USED.

J.U.L.L.E.
JOINT UTILITY LOCATION INFORMATION FOR EXCAVATION
1-800-892-0123 OR 811

ST. CLAIR TOWNSHIP, SECTION 35,34

CONTRACT NO. 76884

F.A.P. ROUTE 103, SECTION: 27-1-VHB-1 ST. CLAIR COUNTY

IDOT PROJECT ENGINEER: PATTI LEBEAU
PHONE: (618) 346-3179

IDOT PROJECT MANAGER: HERVE GELIN
PHONE: (618) 346-3323

DESIGN CONSULTANT
STV INCORPORATED
PHONE: 312-553-0655; CHICAGO, IL