

LONE OAK INVESTMENTS LLC
PARCEL NO. 08-35.0-100-032

CITY OF BELLEVILLE
PARCEL NO. 08-35.0-100-036

CITY OF BELLEVILLE
PARCEL NO. 08-35.0-100-035

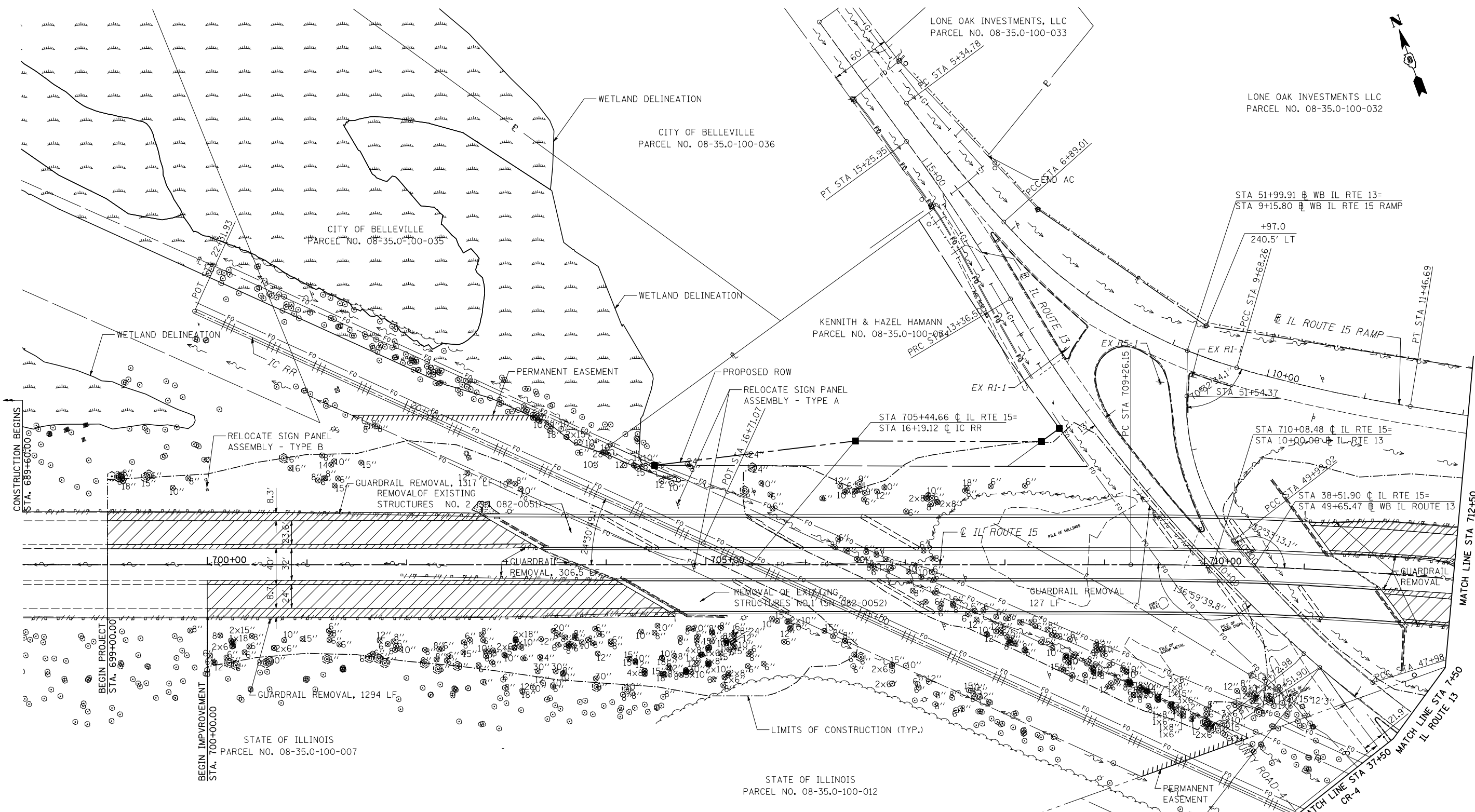
KENNETH & HAZEL HAMANN
PARCEL NO. 08-35.0-100-084

LONE OAK INVESTMENTS, LLC
PARCEL NO. 08-35.0-100-033

STATE OF ILLINOIS
PARCEL NO. 08-35.0-100-007

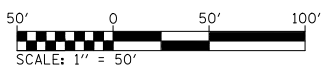
STATE OF ILLINOIS
PARCEL NO. 08-35.0-100-012

ARTHUR SCHMIDT
PARCEL NO. 08-35.0-300-002



- LEGEND**
- PAVEMENT REMOVAL
 - HOT-MIX ASPHALT SURFACE REMOVAL, 1 1/2"
 - PAVED SHOULDER REMOVAL
 - GUARDRAIL REMOVAL
 - TREE REMOVAL
 - TREE TRUNK PROTECTION (LOCATED NEAR CONSTRUCTION LIMITS)

NOTE:
FOR EXISTING CURVE DATA
SEE ALIGNMENTS SHEET.
FOR STORM SEWER REMOVAL
SEE DRAINAGE REMOVAL SHEETS.



FILE NAME = D876884-sht-removals.dgn	USER NAME = thompard	DESIGNED GC	REVISED -
MODEL NAME = \$MODELNAME\$	DRAWN RDT	REVISIONS	REVISED -
PLOT SCALE = 100.0000' / IN.	CHECKED JAP	REVISIONS	REVISED -
PLOT DATE = 10/20/2011	DATE 10-19-11	REVISIONS	REVISED -

**STATE OF ILLINOIS
DEPARTMENT OF TRANSPORTATION**

EXISTING PLAN AND REMOVALS

SCALE: 1"=50' SHEET NO. 1 OF 2 SHEETS STA. 699+00.00 TO STA. 712+50.00

F.A.P. RTE	SECTION	COUNTY	TOTAL SHEETS	SHEET NO.
103	27-1-VHB-1	ST. CLAIR	277	24
CONTRACT NO. 76884				
ILLINOIS FED. AID PROJECT				