

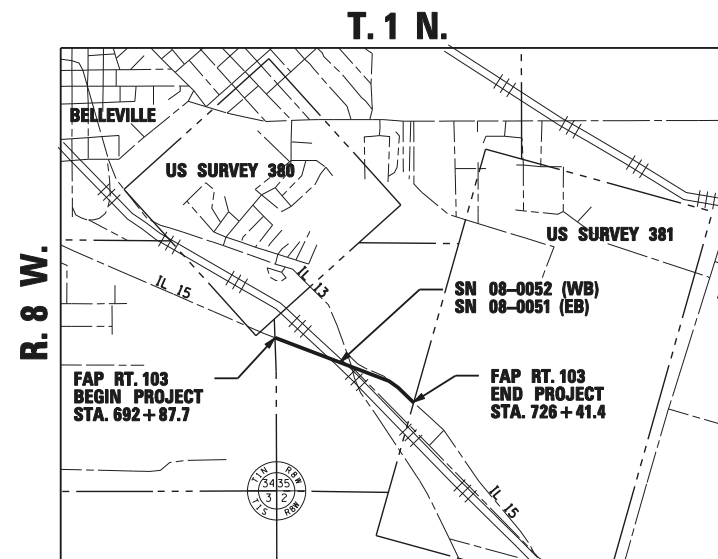
STATE OF ILLINOIS
DEPARTMENT OF TRANSPORTATION
DIVISION OF HIGHWAYS

PLAT OF HIGHWAYS

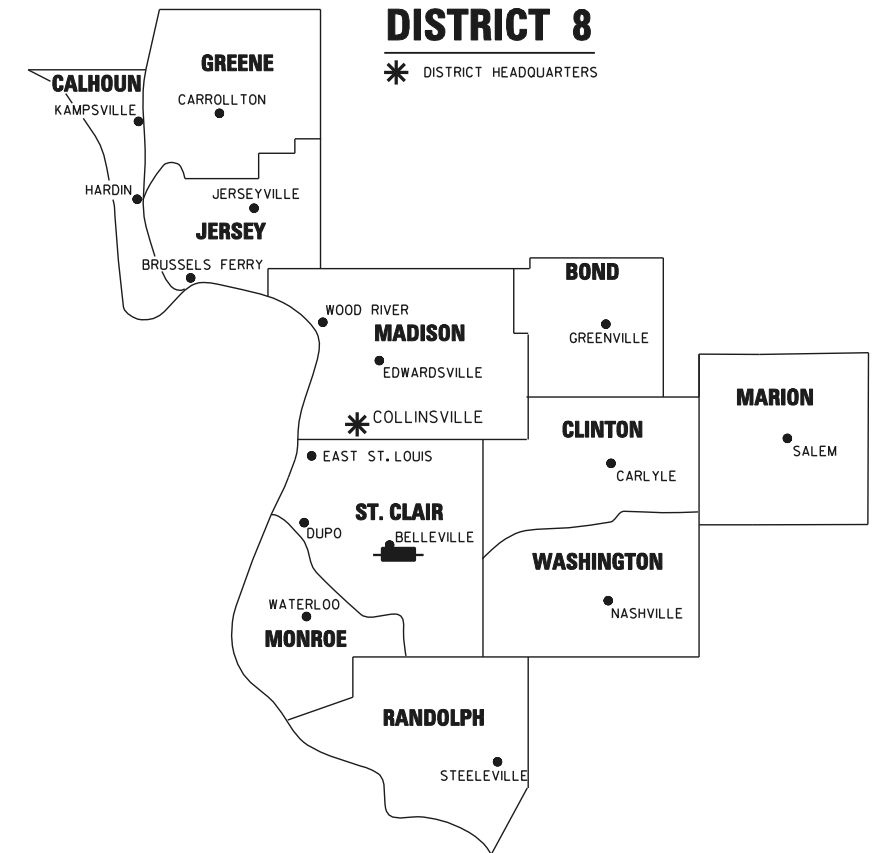
FAP ROUTE 103 (IL ROUTE 15)
SECTION 27-1-VHB-1
ST. CLAIR COUNTY
JOB NO.
R-98-020-09

SHEET INDEX		
SHEET NO.	STATION TO STATION	DESCRIPTION
1	-	COVER SHEET
2	-	GENERAL NOTES
3	692+87.7 to 704+00	PLAT OF HIGHWAYS
4	701+00 to 718+00	PLAT OF HIGHWAYS - PARCELS 8920001, 8920002
5	714+00 to 726+41.4	PLAT OF HIGHWAYS
6	-	PLAT OF HIGHWAYS

SPACE RESERVED FOR RECORDING OFFICER



PROJECT LENGTH = 3353.7 LIN. FT. = 0.635 MILE



LOCATION OF SECTION INDICATED THUS:

PREPARED BY:

HDR HDR Engineering, Inc.
1339 Walnut St. Murphysboro, IL 62966-2026
618-684-5808
Illinois Professional Design Firm #184000829

GARY W. RAINES, PLS NO. 2428
LICENSE EXPIRATION DATE: 11/30/2012

SHEET 1 OF 6

ILLINOIS DEPARTMENT OF TRANSPORTATION DIVISION OF HIGHWAYS/REGION 5/DISTRICT 8 1102 EASTPORT PLAZA DRIVE COLLINSVILLE, ILLINOIS 62234-6198				
F.A.P. RTE.	SECTION	COUNTY	TOTAL SHEETS	SHEET NO.
103	27-1-VHB-1	ST. CLAIR	277	91
			CONTRACT NO. 76884	
FED. ROAD DIST. NO. ILLINOIS FED. AID PROJECT				