

BENCHMARK: Existing chiseled square on south end of northeast wingwall on Structure No. 082-0051. Elev. 493.11

EXISTING STRUCTURE: Structure numbers 082-0051 and 082-0052 were constructed in 1956. These structures consist of dual 8 span built-up steel girder spans: one three-span continuous, one simple span and two, two-span continuous. The riveted girders are supported on pile supported abutments and piers. The overall length of SN 082-0051 (Westbound) is 808 feet and SN 082-0052 (Eastbound) is 746 feet. Each structure is 35'-8" out-to-out of deck, with 30 feet of roadway width. Both structures were rehabilitated in 1985. Traffic will be maintained on SN 082-0051 while the new eastbound structures are constructed. Traffic will then be moved to the new eastbound structures until the westbound structures are complete.

Salvage: None

Traffic Barrier Terminal
Type 6 Std. 631031 (Appr. Ends)
Type 5 Std. 631026 (Exit Ends)

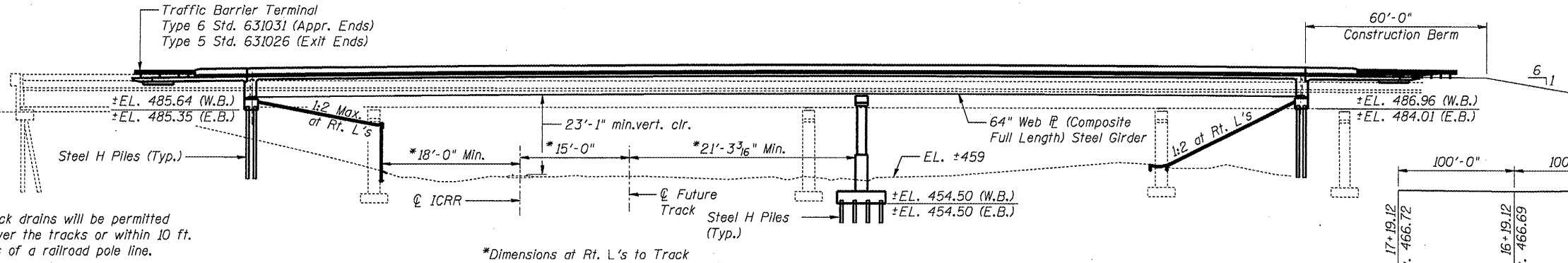
Note:
No freefall deck drains will be permitted in the span over the tracks or within 10 ft. of cross arms of a railroad pole line.

SEISMIC DATA

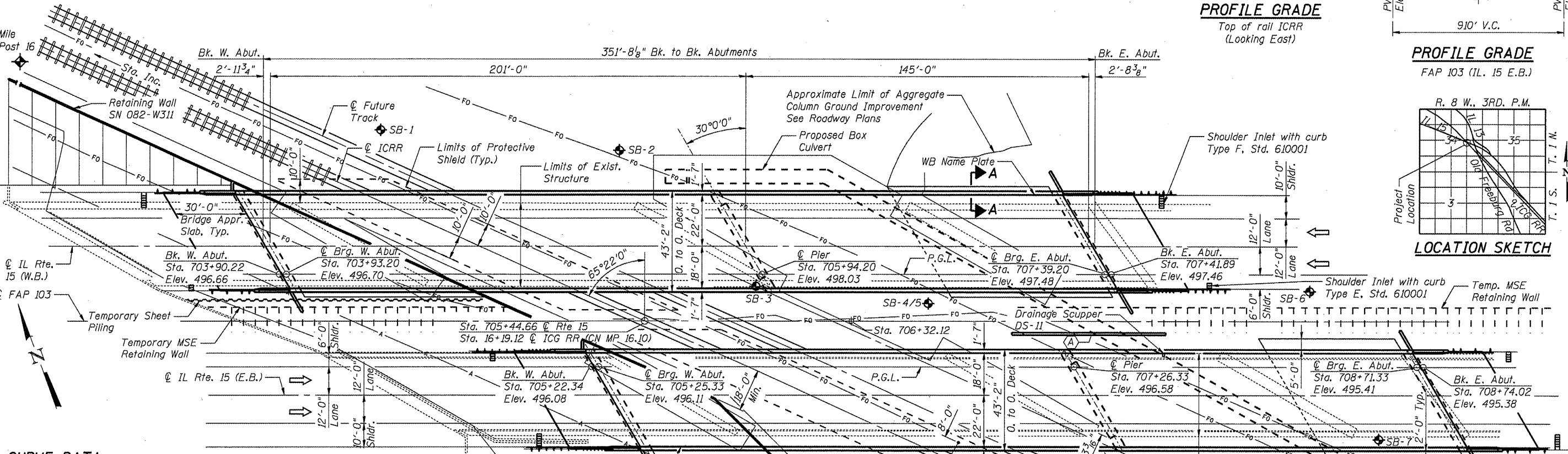
Seismic Performance Zone (SPZ) = 2
Design Spectral Acceleration at 1.0 sec. (S_{D1}) = 0.253
Design Spectral Acceleration at 0.2 sec. (S_{D5}) = 0.582
Soil Site Class = D

DESIGN STRESSES

FIELD UNITS
 f'_c = 3,500 psi
 f_y = 60,000 psi (Reinforcement)
 f_y = 50,000 psi (M270 Grade 50)
 f_y = 36,000 psi (M270 Grade 36)



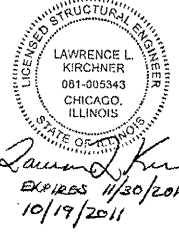
ELEVATION



PLAN

CURVE DATA

(IL Rte. 15)
 Δ = 37° 55' 48" (RT)
 D = 1° 36' 00"
 T = 1,230.59'
 L = 2,370.64'
 E = 205.54'
 R = 3,581.00'
 $S.E.$ = 3.9%
 $P.C.$ = Sta. 709+26.15
 $P.T.$ = Sta. 732+96.79
 $P.I.$ = Sta. 721+56.75

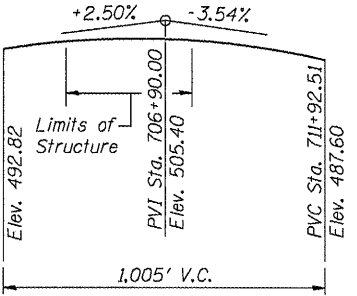


APPROVED
For Structural Adequacy Only
Lawrence L. Kirchner
Engineer of Bridges & Structures

DESIGN SPECIFICATIONS
AASHTO LRFD Bridge Design Specifications
5th Edition, with 2010 Interims

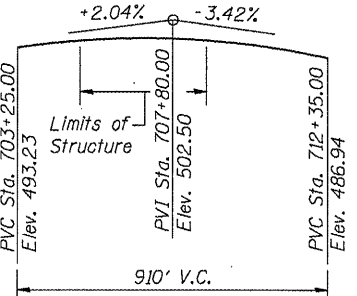
LOADING HL-93
Allow 50#/sq. ft. for future wearing surface.

GENERAL PLAN
ILLINOIS ROUTE 15 OVER ICRR
FAP 103 - SEC. 27-1-VHB-1
ST. CLAIR COUNTY
STATION 706+32.12
STRUCTURE NO. 082-0117 (E.B.)
STRUCTURE NO. 082-0118 (W.B.)



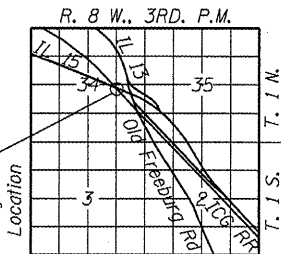
PROFILE GRADE

FAP 103 (IL 15 W.B.)



PROFILE GRADE

FAP 103 (IL 15 E.B.)



LOCATION SKETCH

	USER NAME = brozore	DESIGNED - BTO	REVISED -	STATE OF ILLINOIS DEPARTMENT OF TRANSPORTATION	F.A.P. RTE. 103 SECTION 27-1-VHB-1 COUNTY ST. CLAIR TOTAL SHEETS 277 SHEET NO. 116 CONTRACT NO. 76884 ILLINOIS FED. AID PROJECT
	PLOT SCALE = 427.9999 1" = 100'	CHECKED - JAN	REVISED -		
	PLOT DATE = 10/19/2011	DRAWN - BTO	REVISED -		
		CHECKED - JAN	REVISED -		

FILE NAME = 082017-0118-76884-001-dp2.dgn