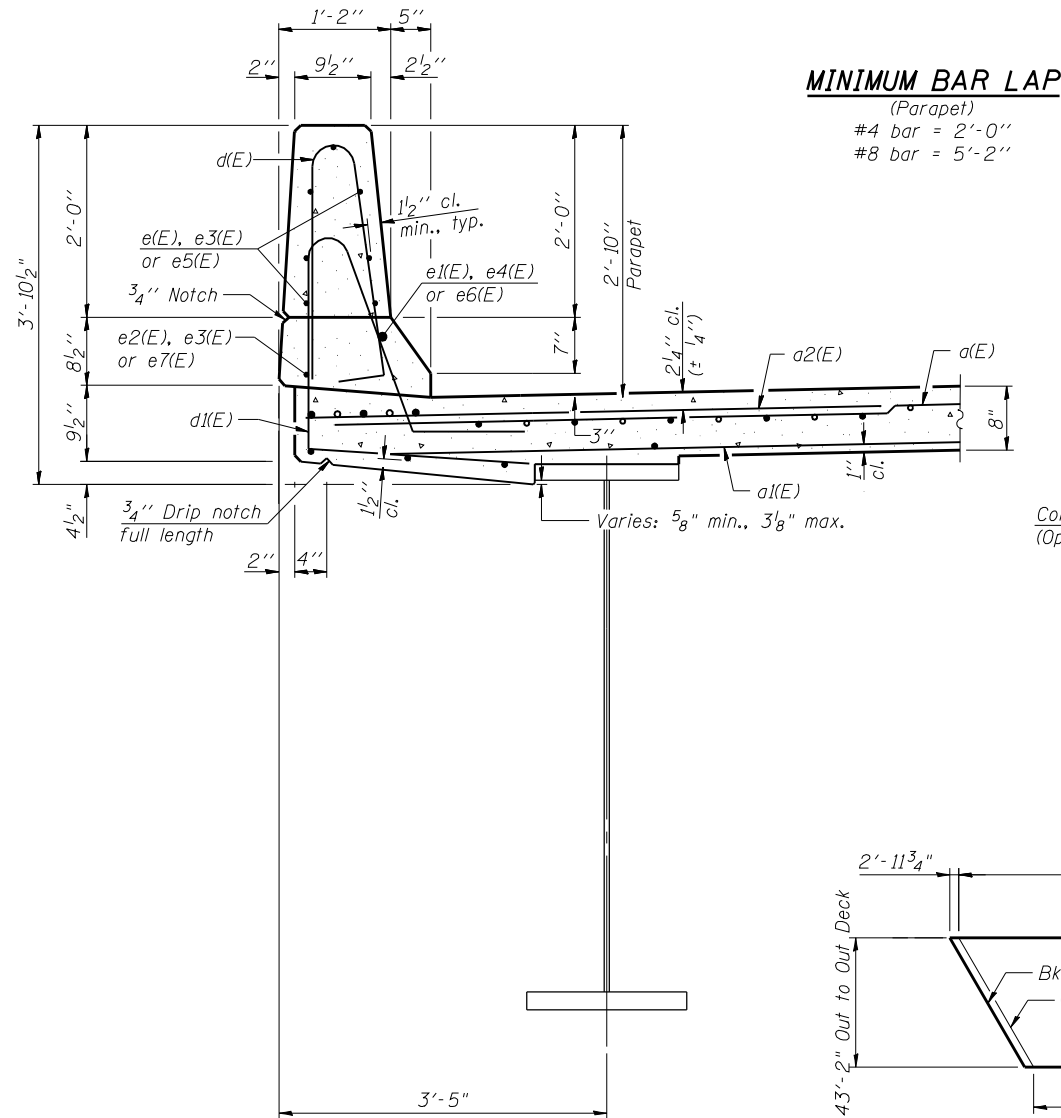
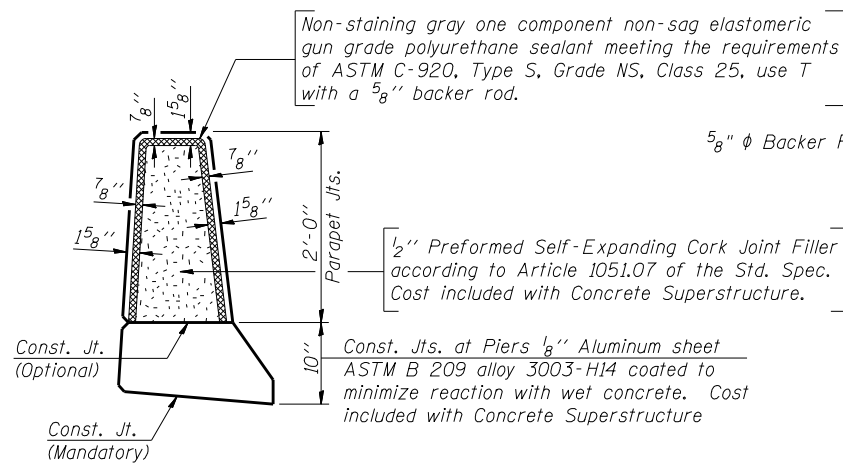


INSIDE ELEVATION OF PARAPET



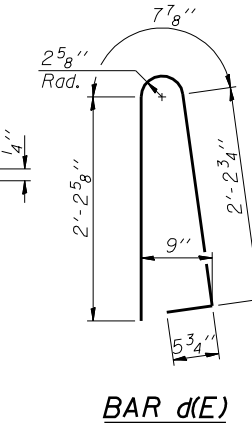
SECTION THRU PARAPET

MINIMUM BAR LAP
(Parapet)
#4 bar = 2'-0"
#8 bar = 5'-2"

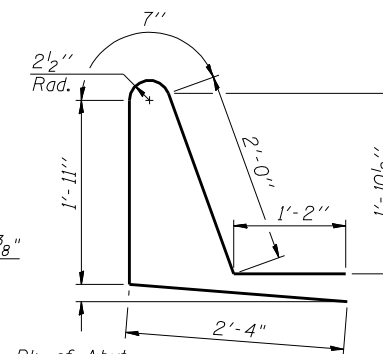


PARAPET JOINT DETAILS

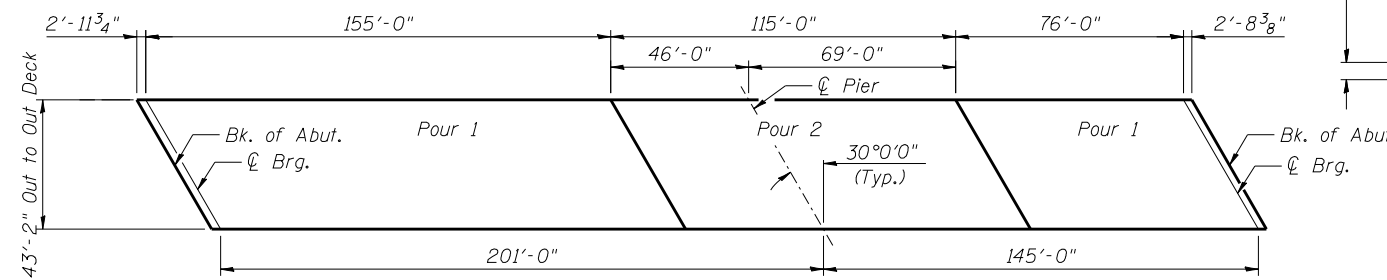
MIN. BAR LAP
#4 Bars- 2'-7"
#8 Bars- 6'-9"



BAR d(E)



BAR d(E)



WESTBOUND PLAN-DECK POURING SEQUENCE

NOTES:

When the deck pour is stopped for the day, at one or more of the transverse Bonded Construction Joints in the deck Pouring Sequence as shown, the next pour shall not be made until both of the following requirements are met:

1. At least 72 hours shall have elapsed from the end of the previous pour.
2. The concrete strength shall have attained a minimum flexural strength of 650 psi or a minimum compressive strength of 3500 psi.

WESTBOUND SUPERSTRUCTURE BILL OF MATERIAL

Bar	No.	Size	Length	Shape
a(E)	838	#5	42'-6"	—
a1(E)	525	#6	42'-2"	—
a2(E)	1,674	#6	6'-6"	—
b(E)	644	#5	27'-6"	—
b1(E)	180	#6	32'-5"	—
b2(E)	646	#5	23'-0"	—
d(E)	764	#5	5'-7"	U
d1(E)	764	#5	8'-0"	L
e(E)	140	#4	18'-0"	—
e1(E)	16	#8	28'-9"	—
e2(E)	16	#4	25'-2"	—
e3(E)	32	#4	19'-8"	—
e4(E)	4	#8	19'-8"	—
e5(E)	98	#4	17'-10"	—
e6(E)	12	#8	26'-9"	—
e7(E)	12	#4	23'-3"	—
m(E)	78	#6	19'-1"	—
m1(E)	8	#6	3'-4"	—
m2(E)	16	#6	10'-2"	—
s6(E)	40	#5	15'-11"	C
s7(E)	44	#5	12'-7"	C
s8(E)	40	#5	15'-8"	C
s9(E)	44	#5	12'-5"	C
u2(E)	88	#4	6'-10"	L
Reinforcement Bars, Epoxy Coated		Pound	141,550	
Concrete Superstructure		Cu. Yds.	542.8	

Bars indicated thus 1 x 6-#5 etc. indicates 1 line of bars with 6 lengths per line.

FILE NAME = 0820117-0118-76884-024-MBP-eps.dgn



USER NAME = brazzera	DESIGNED - RAB	REVISED -
PLOT SCALE = 0x2.0000 '1' / IN.	CHECKED - BTO	REVISED -
PLOT DATE = 12/02/2011	DRAWN - RAB	REVISED -
	CHECKED - JAN	REVISED -

STATE OF ILLINOIS DEPARTMENT OF TRANSPORTATION

PARAPET ELEVATION, DETAILS & B.O.M., WESTBOUND STRUCTURE NO. 082-0117 (E.B.) & 082-0118 (W.B.)

SHEET NO. S-24 OF S-62 SHEETS

F.A.P. RTE.	SECTION	COUNTY	TOTAL SHEETS	SHEET NO.
103	27-1-VHB-1	ST. CLAIR	277	139
CONTRACT NO. 76884				
ILLINOIS FED. AID PROJECT				