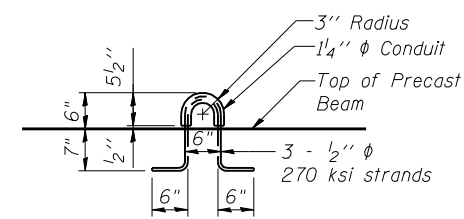


PRECAST CONCRETE BRIDGE SLAB PLAN

Notes:
 Cast-in-place substitution of Precast Concrete Bridge Slab is now allowed. The top surface of Precast Concrete Bridge Slabs shall be roughened to a depth of 1/4" according to the IDOT "Manual for Fabrication of Precast Prestressed Concrete Products".
 Precast Concrete Bridge Slabs shall be erected per Article 504.06 of the Standard Specifications.
 After Precast Concrete Bridge Slab has been erected, holes shall be drilled into corbel and anchor dowels placed. Dowel holes shall be filled with non-shrink grout to top of Precast Slab and allowed to cure fully prior to grouting the longitudinal shear keys.
 Two 1/8" fabric adjusting shims of the dimensions of the exterior bearing pad shall be provided for each bearing pad location. Cost included with Precast Concrete Bridge Slab. A minimum 2 1/2" phi lifting pin shall be used to engage the lifting loops during handling. Compressive strength of precast concrete, f'c, shall be 6,000 psi. See Sheet S-31 and S-32 of S-62 for Precast Concrete Bridge Slab layout.

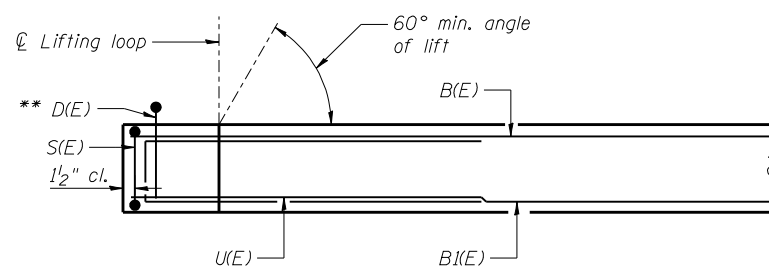


LIFTING LOOP DETAIL

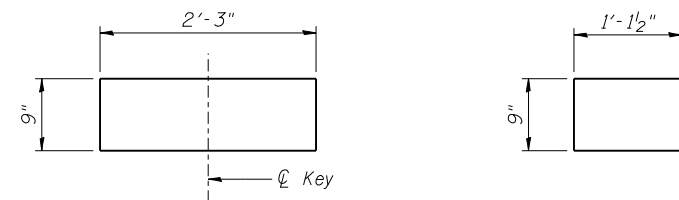
*** BAR LIST
 (ONE PRECAST CONCRETE
 BRIDGE SLAB)**

Bar	No.	Size	Length	Shape
B(E)	5	#4	29'-8"	—
B(I(E)	8	#9	29'-8"	—
** D(E)	21	#4	5'-0"	⌊
S(E)	172	#4	3'-10"	└
U(E)	16	#4	7'-8"	⌊

* For information only
 ** Exterior Precast Slab only



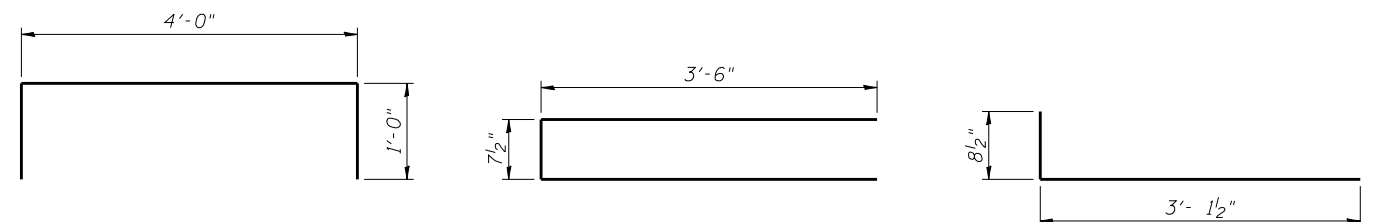
SECTION H-H



INTERIOR

EXTERIOR

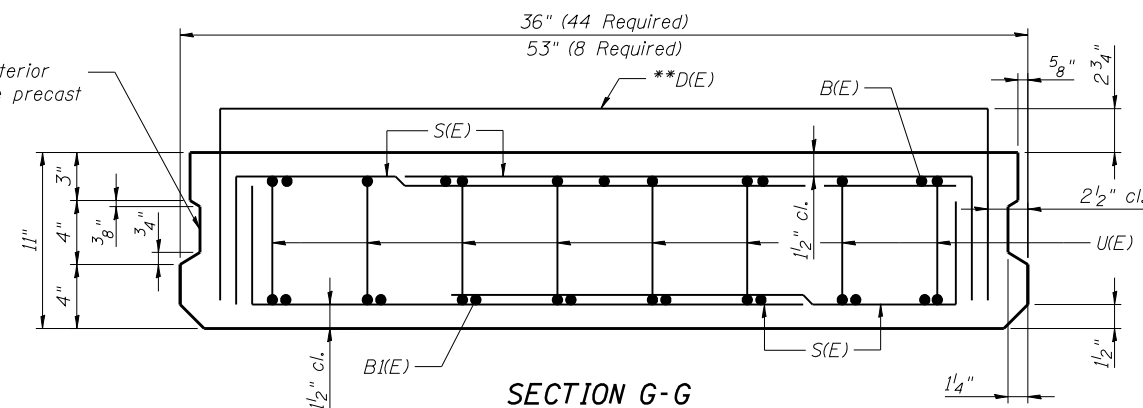
1/2" FABRIC BEARING PADS



BAR D(E)

BAR U(E)

BAR S(E)



SECTION G-G

(Showing Dimensions and Reinforcement)

Omit key on exterior face of outside precast slab

FILE NAME = 0820117-0118-76884-033-Pre-castBridgesSlab.dgn



USER NAME = brozzaro	DESIGNED - RAB	REVISED -
PLOT SCALE = 8x0.0000 '1' / IN.	CHECKED - JAN	REVISED -
PLOT DATE = 10/19/2011	DRAWN - RAB	REVISED -
	CHECKED - JAN	REVISED -

**STATE OF ILLINOIS
 DEPARTMENT OF TRANSPORTATION**

**PRECAST CONCRETE BRIDGE SLAB
 STRUCTURE NO. 082-0117 (E.B.) & 082-0118 (W.B.)**

SHEET NO. S-33 OF S-62 SHEETS

F.A.P. RTE.	SECTION	COUNTY	TOTAL SHEETS	SHEET NO.
103	27-1-VHB-1	ST. CLAIR	277	148
			CONTRACT NO. 76884	
ILLINOIS FED. AID PROJECT				