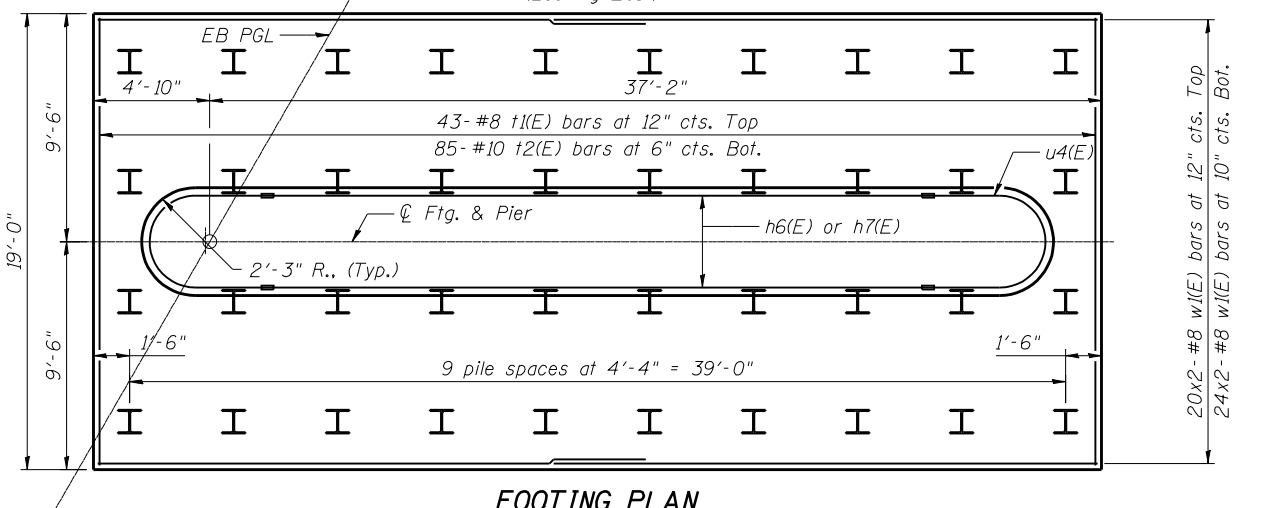
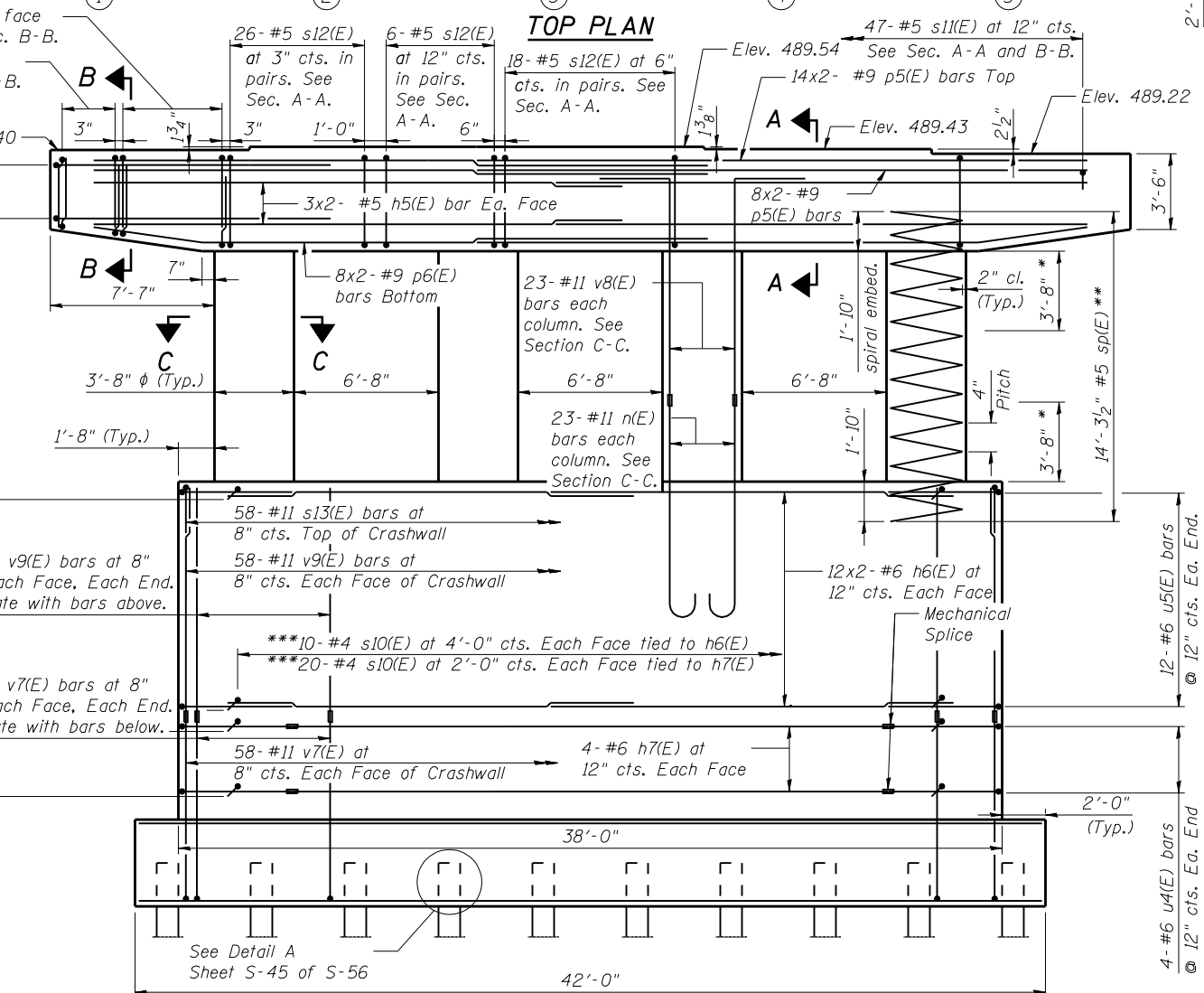
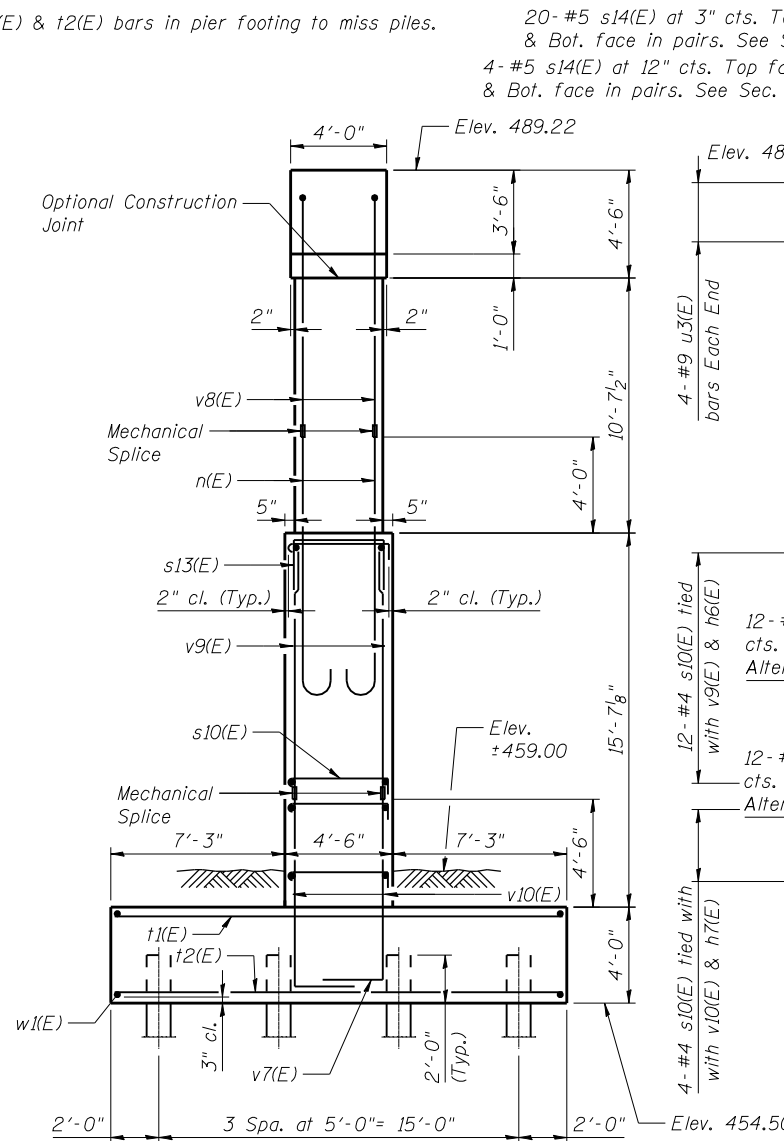
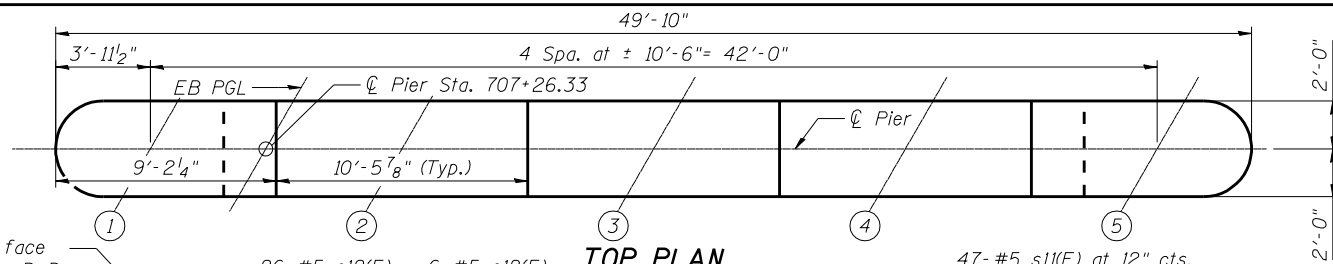


Notes:  
 Space reinforcement in cap to miss anchor bolts.  
 Pour steps monolithically with cap.  
 For details of piles, see sheet S-46 & S-51 of S-62.  
 Pier Cap Stirrup bar spacing and quantities are typical about centerline of pier.  
 Space w1(E) & t2(E) bars in pier footing to miss piles.



\* Splicing of Reinforcement not allowed in this region.  
 \*\* When splicing of spiral reinforcement is necessary, the spirals shall be provided with 1/2 extra turns at the ends to be spliced. These additional turns shall either be welded together according to AWS D1.4, or shall both terminate with a 135° standard hook.  
 \*\*\* s10(E) bars shall be located at bar grid intersections, and the hooks of all ties shall enclose both horizontal and vertical bars at the intersection. The 90° hooks of adjacent s10(E) bars shall be alternated end-for-end.

**PILE DATA**

Type: HP 12x53  
 Nominal Required Bearing: 414 kips  
 Factored Resistance Available: 228 kips  
 Est. Length: 57 ft.  
 No. Production Piles: 39  
 No. Test Piles: 1

**MIN. LAP LENGTH**

#5 = 3'-3"  
 #6 = 3'-10"  
 #8 = 6'-9"  
 #9 = 8'-7"

FILE NAME = 0820117-0118-76884-045-Pier.EB.dgn



USER NAME = brazzera	DESIGNED - SAB	REVISED -
PLOT SCALE = 8x0.0000 '1' / IN.	CHECKED - MJK	REVISED -
PLOT DATE = 10/19/2011	DRAWN - RAB	REVISED -
	CHECKED - SAB	REVISED -

STATE OF ILLINOIS  
 DEPARTMENT OF TRANSPORTATION

PIER PLAN AND ELEVATION EASTBOUND  
 STRUCTURE NO. 082-0117 (E.B.) & 082-0118 (W.B.)

SHEET NO. S-45 OF S-62 SHEETS

F.A.P. RTE.	SECTION	COUNTY	TOTAL SHEETS	SHEET NO.
103	27-1-VHB-1	ST. CLAIR	277	160
CONTRACT NO. 76884				

ILLINOIS FED. AID PROJECT