

GENERAL NOTES

1. Reinforcement bars shall conform to the requirements of ASTM A 706 Gr 60. See Special Provisions.
2. Reinforcement bars designated (E) shall be epoxy coated.
3. The existing structural steel coating contains lead. The Contractor shall take appropriate precautions to deal with the presence of lead on this project.
4. The embankment configuration shown shall be the minimum that must be placed and compacted prior to construction of the abutments.
5. Slipforming of parapets is allowed.
6. Slopewall shall be reinforced with welded wire fabric, 6" x 6" - W4.0 x W4.0, weighing 58 lbs. per 100 sq. ft.
7. The Contractor is advised that the existing structure contains members that are in a deteriorated condition with reduced load carrying capacity. It is the Contractor's responsibility to account for the condition of the existing structure when developing construction procedures for the complete or partial removal, or replacement of the structure. An Existing Structure Information Package is available upon request as noted in the special provisions.
8. Removal of Existing Structures No. 1 and Removal of Existing Structures No. 2 is included with the drawing set for SN 082-0117 and 082-0118.

CURRENT RATINGS ON FILE FOR EXISTING WESTBOUND STRUCTURE

Inventory: HS 25.0
 Operating: HS 41.8
 Live Load Restrictions: No

Inventory and Operating Ratings and Live Load Restrictions are provided for information only. Inventory and Operating Ratings are based on HS loading and configuration. Live Load Restrictions are based on Illinois legal loads and configurations. The Ratings and Live Load Restrictions are not necessarily representative of capacities to support the Contractor's equipment.

STATION 710+28.97
 BUILT 201_ BY
 STATE OF ILLINOIS
 F.A.P. RT. 103 SEC. 27-1-VHB-1
 LOADING HL-93
 STRUCTURE NO. 082-0119

NAME PLATE (E.B.)
 See Std. 515001

STATION 709+89.08
 BUILT 201_ BY
 STATE OF ILLINOIS
 F.A.P. RT. 103 SEC. 27-1-VHB-1
 LOADING HL-93
 STRUCTURE NO. 082-0120

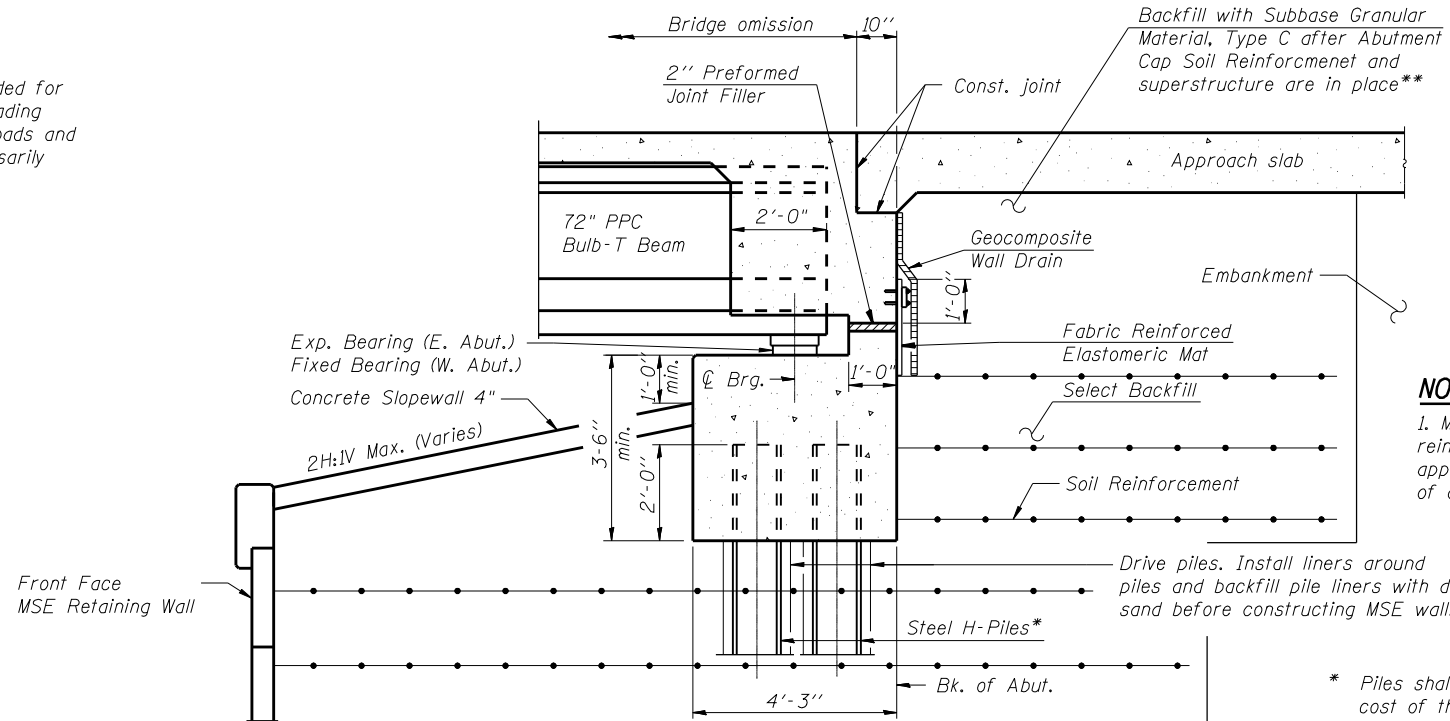
NAME PLATE (W.B.)
 See Std. 515001

TOTAL BILL OF MATERIAL

ITEM	UNIT	SUPER	SUB	TOTAL
Subbase Granular Material, Type C	CU YD	440		440
Protective Shield	SQ YD	687		687
Concrete Structures	CU YD		218.4	218.4
Concrete Superstructure	CU YD	786.2		786.2
Bridge Deck Grooving	SQ YD	1,082		1,082
Protective Coat	SQ YD	1,360		1,360
Furnishing and Erecting Precast Prestressed Concrete Bulb T-Beams 72"	FOOT	2,021.5		2,021.5
Reinforcement Bars, Epoxy Coated	POUND	156,720	17,400	174,120
Bar Splicers	EACH	180		180
Slope Wall 4"	SQ YD		341	341
Furnishing Steel Piles HP12x53	FOOT		3,012	3,012
Driving Piles	FOOT		3,012	3,012
Test Pile Steel HP12x53	EACH		4	4
Pile Shoes	EACH		52	52
Name Plates	EACH	2		2
Elastomeric Bearing Assembly, Type I	EACH	16		16
Anchor Bolts, 1"	EACH	32		32
Geocomposite Wall Drain	SQ YD	152		152
Temporary Mechanically Stabilized Earth Retaining Wall	SQ FT		3,218	3,218
Temporary Sheet Piling	SQ FT		695	695

INDEX OF SHEETS

- S-1 General Plan
- S-2 General Notes, B.O.M. & Index of Sheets
- S-3 Foundation Plan
- S-4 Temporary MSE Retaining Wall
- S-5 Stage Construction Deck Sections
- S-6 Deck Elevation Plan Eastbound
- S-7 Deck Elevations Eastbound
- S-8 Deck Elevation Plan Westbound
- S-9 Deck Elevations Westbound
- S-10 East E.B. Bridge Approach Slab Elevations
- S-11 West E.B. Bridge Approach Slab Elevations
- S-12 East W.B. Bridge Approach Slab Elevations
- S-13 West W.B. Bridge Approach Slab Elevations
- S-14 Deck Plan Eastbound
- S-15 Deck Plan Westbound
- S-16 Deck Cross Section Eastbound
- S-17 Deck Cross Section Westbound
- S-18 Superstructure Details Eastbound
- S-19 Superstructure Details Westbound
- S-20 Parapet Elevation, Details & B.O.M. Eastbound
- S-21 Parapet Elevation, Details & B.O.M. Westbound
- S-22 East E.B. Bridge Approach Slab Plan
- S-23 West E.B. Bridge Approach Slab Plan
- S-24 Eastbound Bridge Approach Slab Details
- S-25 East W.B. Bridge Approach Slab Plan
- S-26 West W.B. Bridge Approach Slab Plan
- S-27 Westbound Bridge Approach Slab Details
- S-28 Framing Plan, Moment and Reaction Table Eastbound
- S-29 Framing Plan, Moment and Reaction Table Westbound
- S-30 72" PPC Bulb T-Beam
- S-31 72" PPC Bulb T-Beam Details
- S-32 Bearing Details
- S-33 East Abutment Plan and Elevation Eastbound
- S-34 East Abutment Plan and Elevation Westbound
- S-35 East Abutment Details
- S-36 West Abutment Plan and Elevation Eastbound
- S-37 West Abutment Plan and Elevation Westbound
- S-38 West Abutment Details
- S-39 Bar Splicer Assembly
- S-40 HP Pile Details
- S-41 Concrete Parapet Slipforming Option
- S-42 Boring Logs
- S-43 Boring Logs
- S-44 Boring Logs
- S-45 Boring Logs
- S-46 Boring Logs
- S-47 Boring Logs
- S-48 Boring Logs
- S-49 Boring Logs
- S-50 Boring Logs
- S-51 Boring Logs



TYPICAL SECTION THRU SEMI-INTEGRAL ABUTMENT
 (Horiz. dim. @ Rt. L's)

NOTE:
 1. MSE Retaining wall supplier shall design and supply abutment soil reinforcement to resist earth pressure of 40pcf equivalent fluid weight applied to back of abutment plus a longitudinal force of 6.6 kip/ft length of abutment.

* Piles shall be driven prior to placement of the reinforced select fill. The cost of the pile liners shall be included with the cost of Furnishing Steel Piles HP12x53.

** Subbase Granular Material, Type C shall remain uncompacted.

FILE NAME = 0820119-0120-76884-002-GeneralNotes.dgn



USER NAME = brazzera	DESIGNED - MJK	REVISED - -
	CHECKED - JAN	REVISED - -
PLOT SCALE = 0x2.0000 '1' / IN.	DRAWN - MJK	REVISED - -
PLOT DATE = 10/19/2011	CHECKED - JAN	REVISED - -

**STATE OF ILLINOIS
 DEPARTMENT OF TRANSPORTATION**

**GENERAL NOTES, B.O.M. & INDEX OF SHEETS
 STRUCTURE NO. 082-0119 (E.B.) & 082-0120 (W.B.)**

SHEET NO. S-2 OF S-51 SHEETS

F.A.P. RTE.	SECTION	COUNTY	TOTAL SHEETS	SHEET NO.
103	27-1-VHB-1	ST. CLAIR	277	179
CONTRACT NO. 76884			ILLINOIS FED. AID PROJECT	