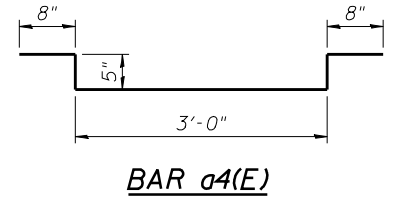
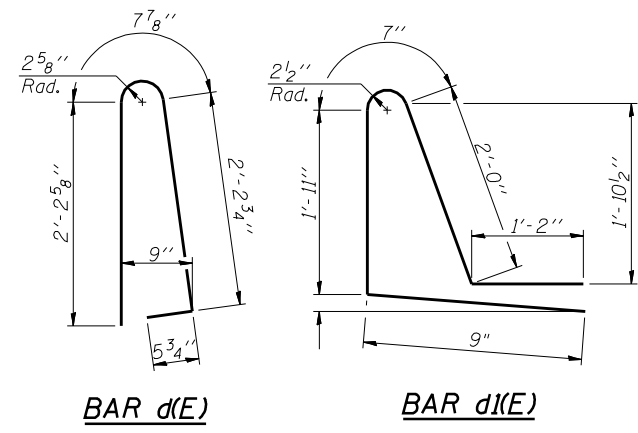
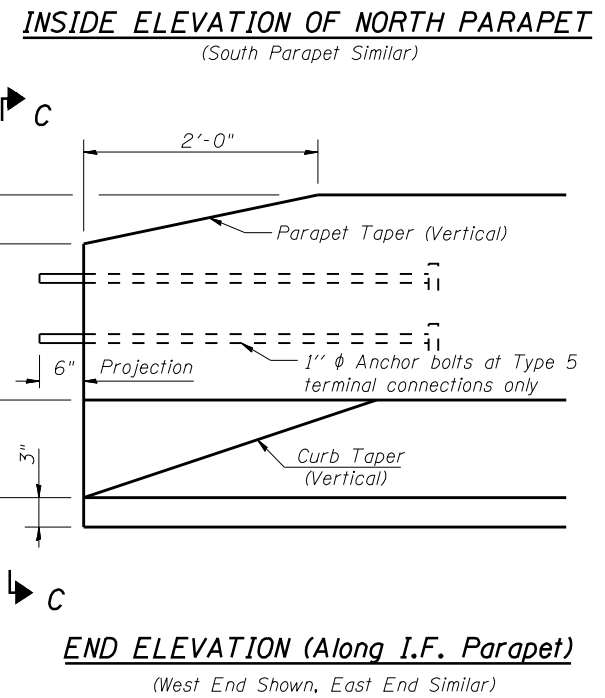


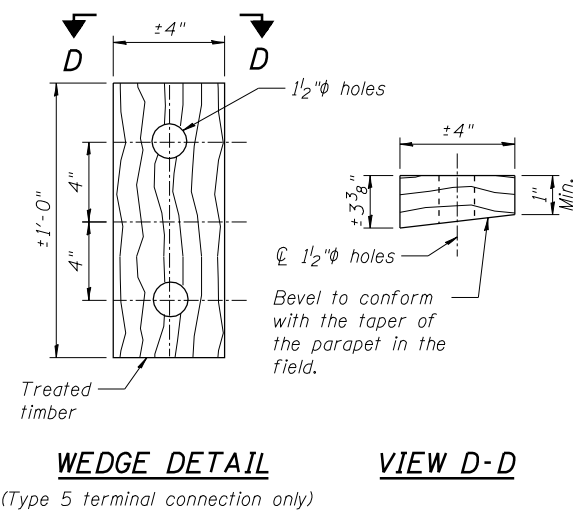
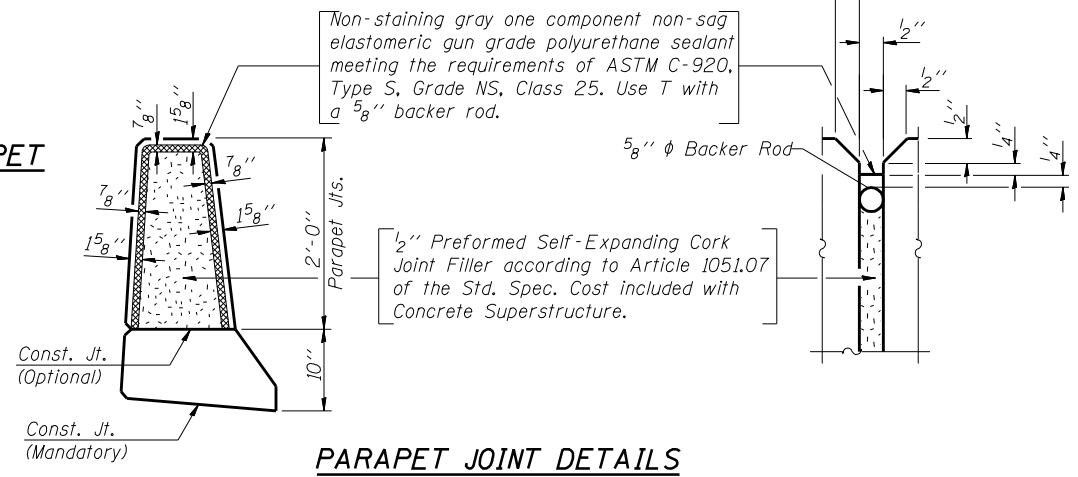
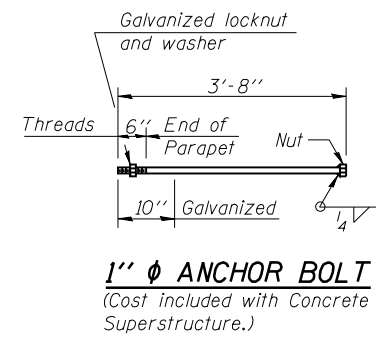
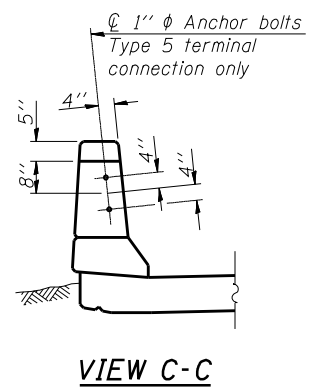
MINIMUM BAR LAP
(Parapet)
#4 bar = 2'-0"
#8 bar = 5'-2"



SUPERSTRUCTURE BILL OF MATERIAL

Bar	No.	Size	Length	Shape
a(E)	172	#5	42'-6"	—
a1(E)	155	#5	42'-6"	—
a2(E)	342	#6	6'-6"	—
a3(E)	8	#5	25'-11"	—
a4(E)	912	#4	5'-2"	⌋
b(E)	225	#5	27'-9"	—
b1(E)	204	#5	23'-7"	—
b2(E)	64	#4	29'-7"	—
d(E)	288	#5	5'-7"	⌋
d1(E)	282	#5	6'-5"	⌋
e(E)	84	#4	18'-4"	—
e1(E)	14	#4	18'-8"	—
e2(E)	10	#8	30'-2"	—
e3(E)	14	#4	20'-4"	—
m(E)	66	#6	18'-9"	—
m1(E)	8	#6	1'-9"	—
m2(E)	28	#6	3'-4"	—
s(E)	78	#5	12'-7"	⌋
s1(E)	50	#4	15'-10"	⌋
s2(E)	8	#5	13'-11"	⌋
u(E)	70	#4	10'-3"	⌋
u1(E)	8	#4	12'-11"	⌋
v(E)	90	#5	3'-9"	⌋
Reinforcement Bars, Epoxy Coated			Lbs.	44,360
Concrete Superstructure			Cu. Yds.	275.9

Bars indicated thus 1 x 5-#8 etc. indicates 1 line of bars with 5 lengths per line.



NOTE:
Slipforming of parapets is allowed.

FILE NAME = 0820119-0120-76884-021-Parapet-WB.dgn



USER NAME = brazzera	DESIGNED - MJK	REVISED - -
PLOT SCALE = 1/8" = 1'-0"	CHECKED - JAN	REVISED - -
PLOT DATE = 10/19/2011	DRAWN - MJK	REVISED - -
	CHECKED - JAN	REVISED - -

**STATE OF ILLINOIS
DEPARTMENT OF TRANSPORTATION**

**PARAPET ELEVATION, DETAILS & B.O.M. WESTBOUND
STRUCTURE NO. 082-0119 (E.B.) & 082-0120 (W.B.)**

SHEET NO. S-21 OF S-51 SHEETS

F.A.P. RTE. 103	SECTION 27-1-VHB-1	COUNTY ST. CLAIR	TOTAL SHEETS 277	SHEET NO. 198
CONTRACT NO. 76884			ILLINOIS FED. AID PROJECT	