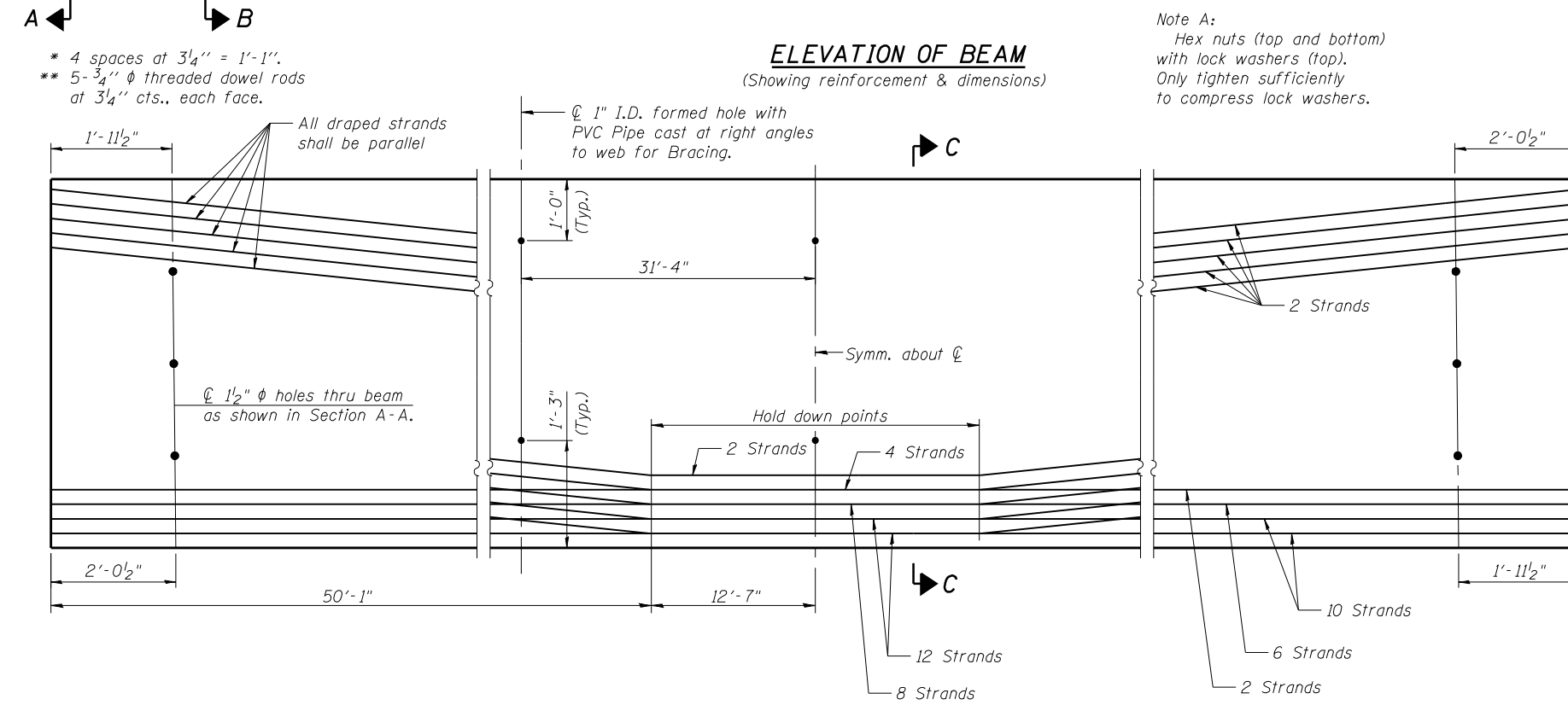
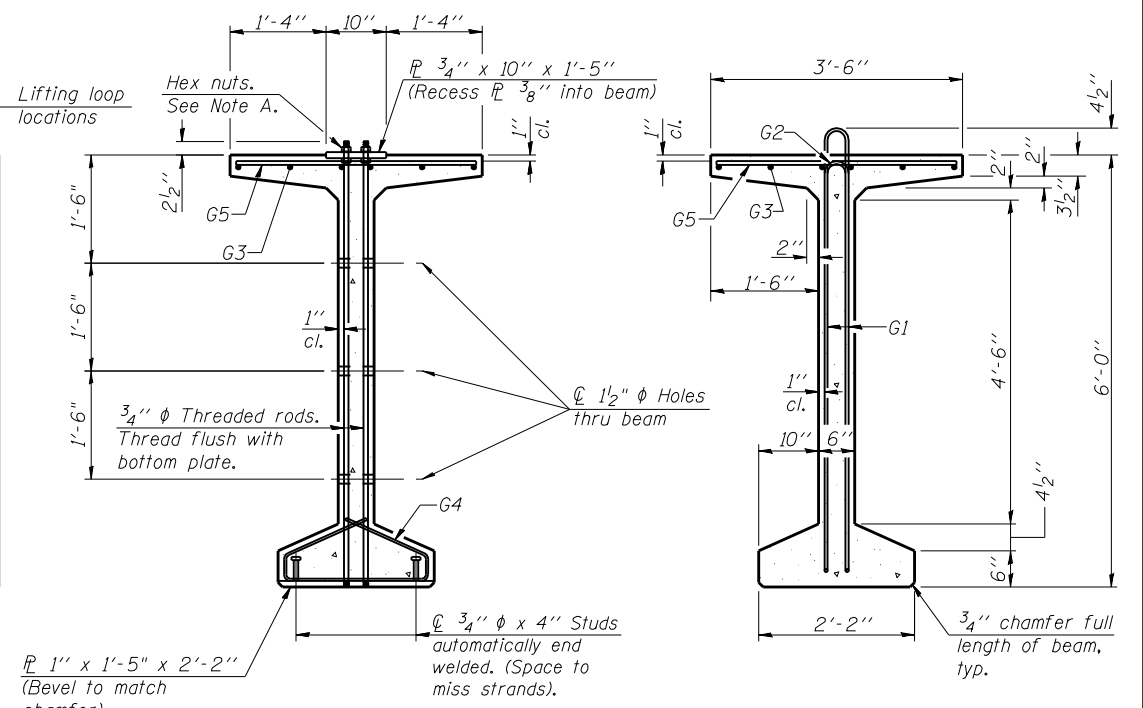


ELEVATION OF BEAM
(Showing reinforcement & dimensions)



ELEVATION OF BEAM
(Showing prestressing steel)



SECTION A-A

SECTION B-B

Note A:
Hex nuts (top and bottom) with lock washers (top). Only tighten sufficiently to compress lock washers.

*****BAR LIST
ONE BEAM ONLY**

Bar	No.	Size	Length	Shape
G1	324	#4	13'-5"	∩
G2	20	#4	11'-8"	∩
G3	24	#6	33'-6"	—
G4	56	#3	4'-11"	∩
G5	169	#5	3'-4"	—

***For information only

Notes:
See sheet S-31 of S-51 for additional details and Bill of Material.
Required release strength, f'_{ci} , shall be 6000 psi.

**DESIGN STRESSES
PRECAST PRESTRESSED CONC. UNITS**

$f'_c = 7,000$ psi
 $f'_{ci} = 6,000$ psi
 $f_{pu} = 270,000$ psi
 $f_{pbt} = 201,960$ psi

FILE NAME = 0820119-0120-76884-030-PPCBulbTBeam.dgn



USER NAME = brazzera	DESIGNED - MJK	REVISED - -
PLOT SCALE = 0x2.0000 '1' / IN.	CHECKED - BTO	REVISED - -
PLOT DATE = 10/19/2011	DRAWN - MJK	REVISED - -
	CHECKED - BTO	REVISED - -

**STATE OF ILLINOIS
DEPARTMENT OF TRANSPORTATION**

**72" PPC BULB T-BEAM
STRUCTURE NO. 082-0119 (E.B.) & 082-0120 (W.B.)**

SHEET NO. S-30 OF S-51 SHEETS

F.A.P. RTE.	SECTION	COUNTY	TOTAL SHEETS	SHEET NO.
103	27-1-VHB-1	ST. CLAIR	277	207
			CONTRACT NO. 76884	
ILLINOIS FED. AID PROJECT				