

STATE OF ILLINOIS
 DEPARTMENT OF TRANSPORTATION
 DIVISION OF HIGHWAYS

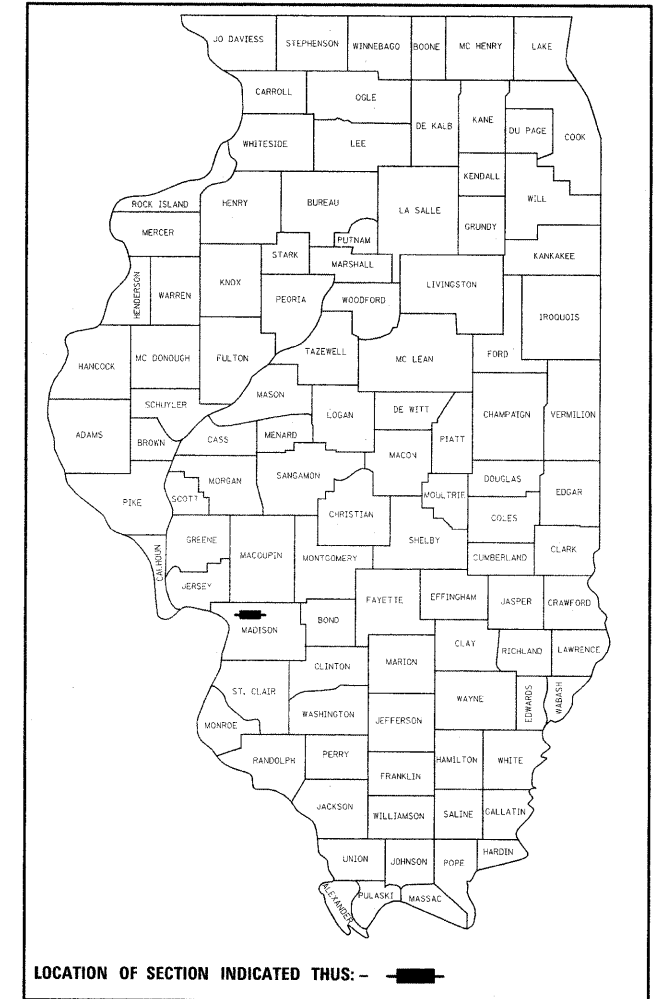
**PROPOSED
 HIGHWAY PLANS**

FAP ROUTE 785 (IL 140 / IL 111)
 SECTION (132-2,3,4, 133-1)RS
 PROJECT F-0785(032)
 RESURFACING AND BI-DIRECTIONAL TURN LANE
 MADISON COUNTY

FOR INDEX OF SHEETS, SEE SHEET NO. 2

| F.A.P. RTE. | SECTION | COUNTY | TOTAL SHEETS | SHEET NO. |
|-------------|----------------------|----------|--------------------|-----------|
| 785 | (132-2,3,4, 133-1)RS | MADISON | 122 | 1 |
| | | ILLINOIS | CONTRACT NO. 76B80 | |

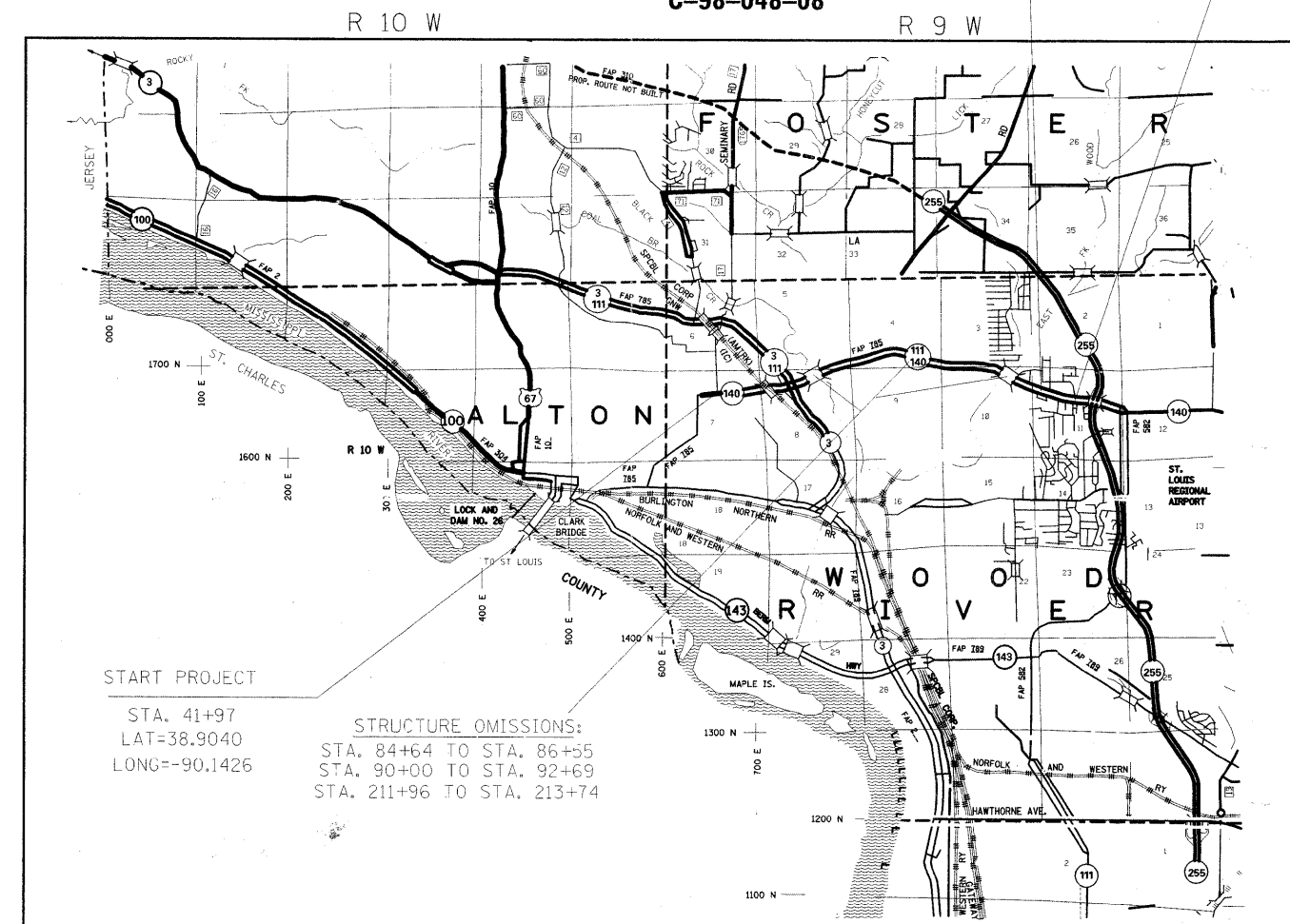
D-98-052-08



LOCATION OF SECTION INDICATED THUS: - [black rectangle] -

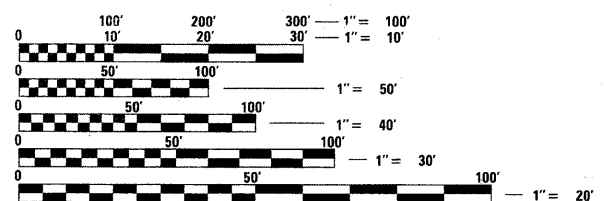
STATION EQUATION:
 215+45 BK = 453+54 AH
 END PROJECT
 STA. 499+80
 LAT=38.9030
 LONG=-90.0680

C-98-048-08



TRAFFIC DATA
 ADT = 23,000
 MU = 1.6%
 SU = 2.8%

FUNCTIONAL CLASS
 OTHER PRINCIPAL ARTERIAL



FULL SIZE PLANS HAVE BEEN PREPARED USING STANDARD ENGINEERING SCALES. REDUCED SIZED PLANS WILL NOT CONFORM TO STANDARD SCALES. IN MAKING MEASUREMENTS ON REDUCED PLANS, THE ABOVE SCALES MAY BE USED.

J.U.L.I.E.
 JOINT UTILITY LOCATION INFORMATION FOR EXCAVATION
 1-800-892-0123
 OR 811

START PROJECT
 STA. 41+97
 LAT=38.9040
 LONG=-90.1426

STRUCTURE OMISSIONS:
 STA. 84+64 TO STA. 86+55
 STA. 90+00 TO STA. 92+69
 STA. 211+96 TO STA. 213+74

SCALE
 1" = 1 MILE

GROSS LENGTH = 21,974 FT. = 4.16 MILE
 NET LENGTH = 21,337 FT. = 4.04 MILE

PROJECT ENGINEER: TIM PADGETT (618)346-3325
 PROJECT MANAGER: AARON KARLAS (618)346-3208

CONTRACT NO. 76B80

STATE OF ILLINOIS
 DEPARTMENT OF TRANSPORTATION
 DIVISION OF HIGHWAYS

SUBMITTED Feb 7 20 11
Mr. C. Harris
 DEPUTY DIRECTOR OF HIGHWAYS, REGION ENGINEER

March 25 20 11
Scott E. Still, P.E.
 acting ENGINEER OF DESIGN AND ENVIRONMENT

March 25 20 11
Christine M. Reed
 DIRECTOR OF HIGHWAYS, CHIEF ENGINEER

**PRINTED BY THE AUTHORITY
 OF THE STATE OF ILLINOIS**