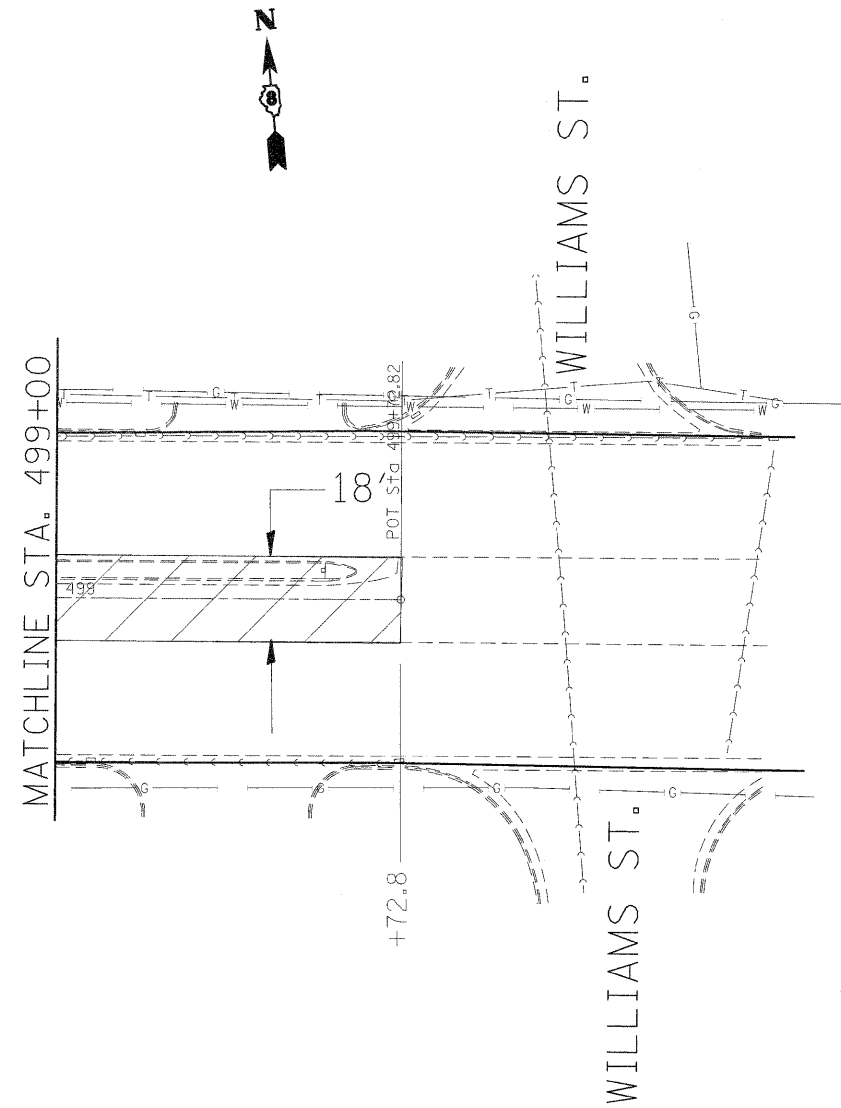


SEE DETAIL SHEET NO. 60 & 61 FOR SIDEROAD AND ENTRANCE TRANSITIONS.



SEE SCHEDULES FOR STORM SEWER RELATED QUANTITIES.

REMOVAL  
 CURB, MEDIAN, &  
 PAVEMENT REMOVAL  
 PROPOSED  
 PCC PAVEMENT 10" (JOINTED)  
 4" AGGREGATE SUBBASE

REVISOR'S MARK: REVISED SHEET 4/13/11

SCALE 1"=20'

FILE NAME = #FILEL#	USER NAME = #USER#	DESIGNED - DRAWN -	REVISED - REVISED -	<b>STATE OF ILLINOIS DEPARTMENT OF TRANSPORTATION</b>	<b>PLAN SHEET</b>	F.A.P. RTE. 785	SECTION (132-2,3,4, 133-1)RS	COUNTY MADISON	TOTAL SHEETS 122	SHEET NO. 52	
	PLOT SCALE = #SCALE#	CHECKED -	REVISED -			CONTRACT NO. 76B80					
	PLOT DATE = #DATE#	DATE -	REVISED -			FED. ROAD DIST. NO. ILLINOIS FED. AID PROJECT					