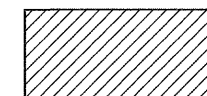
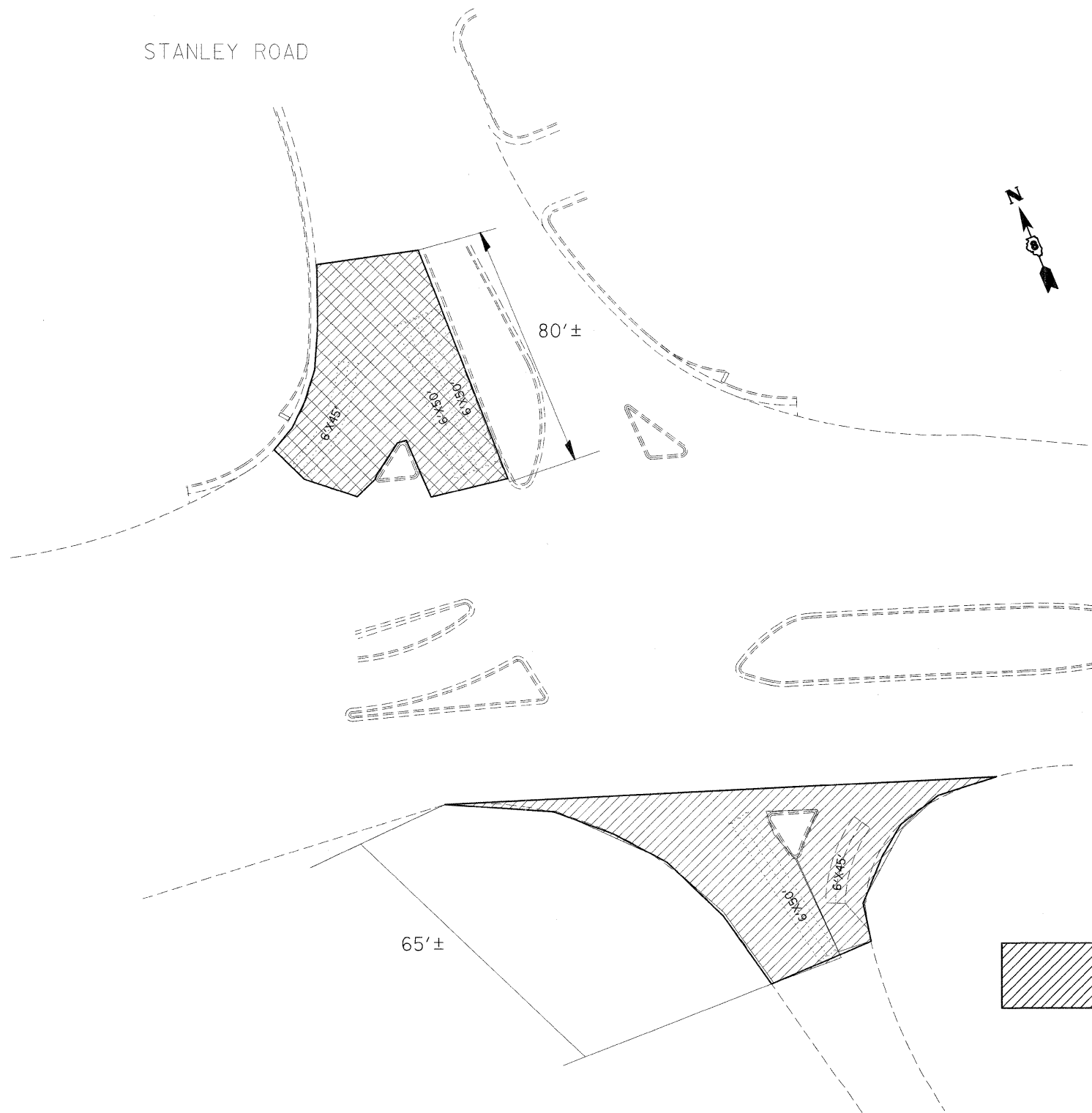


PROPOSED
 10" PCC PAVEMENT
 4" AGGREGATE SUBBASE
 PAVEMENT REMOVAL

STANLEY ROAD



PROPOSED 1 1/2" BUTT JOINT (BJ)
 INCIDENTAL HMA SURFACING
 (2 1/2" @ EOP TO 1 1/2" @ BJ)

REVISSED SHEET 4/13/11

NOT TO SCALE

FILE NAME =	USER NAME = karlesal	DESIGNED -	REVISSED -
ci:\pwork\pwork\karlesal\0169744\d87	6b80-sht-plan.dgn	DRAWN -	REVISSED -
	PLOT SCALE = 50.0000' / IN.	CHECKED -	REVISSED -
	PLOT DATE = 3/18/2011	DATE -	REVISSED -

STATE OF ILLINOIS
 DEPARTMENT OF TRANSPORTATION

DETAILS

SCALE: _____ SHEET NO. ___ OF ___ SHEETS STA. _____ TO STA. _____

F.A.P. RTE.	SECTION	COUNTY	TOTAL SHEETS	SHEET NO.
785	(132-2,3,4, 133-1)RS	MADISON	122	75
CONTRACT NO. 76B80				
FED. ROAD DIST. NO. ILLINOIS FED. AID PROJECT				