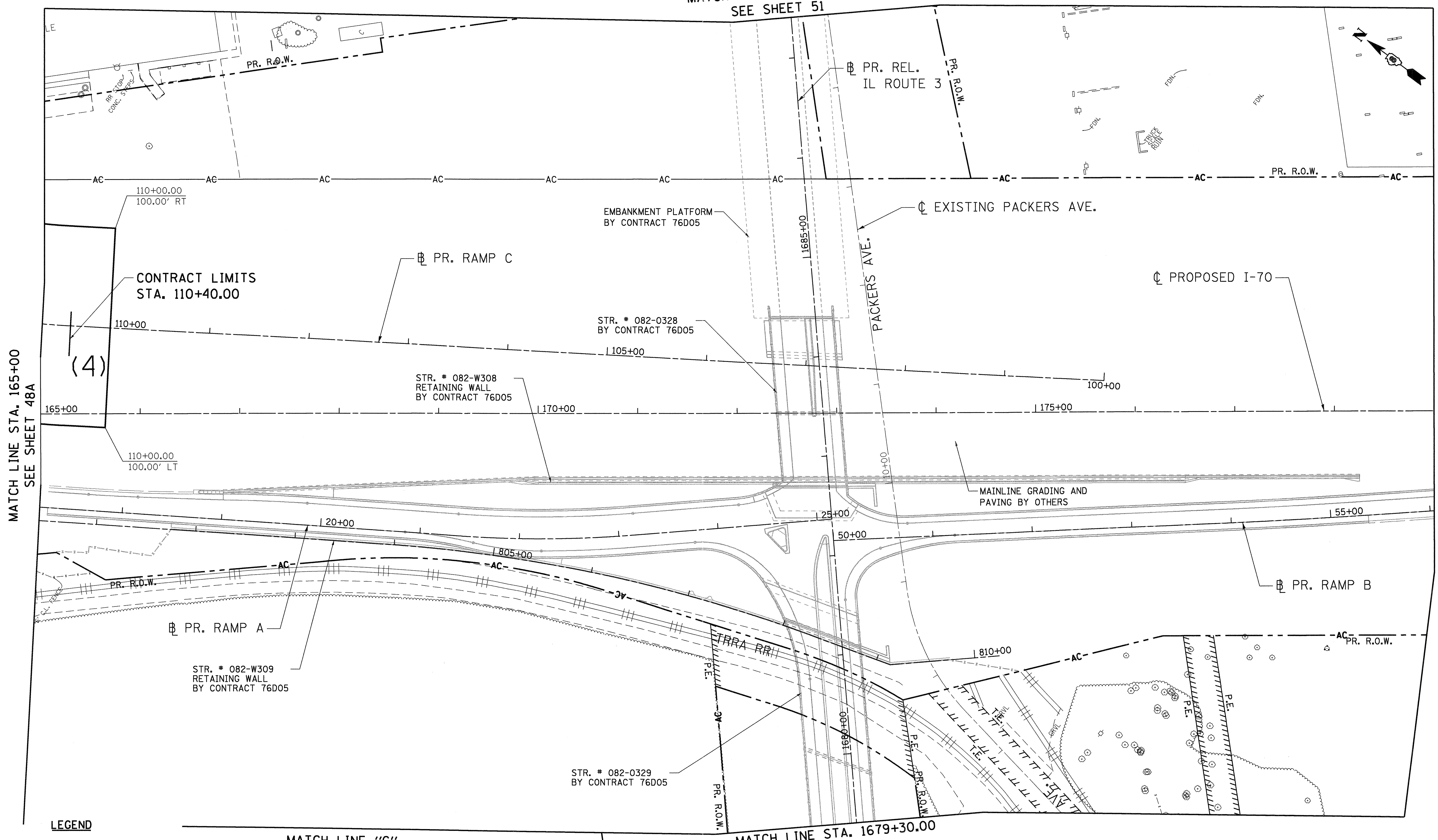


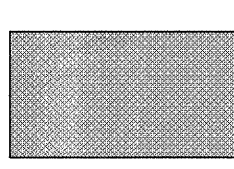
MATCH LINE STA. 1687+40
SEE SHEET 51

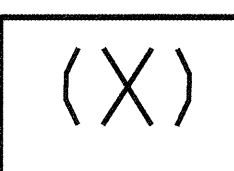
MATCH LINE STA. 165+00
SEE SHEET 48A

STA. 179+00



LEGEND

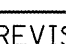
 CLEARING, SPECIAL

 NON-SPECIAL WASTE DISPOSAL LIMITS. SEE SPECIAL PROVISIONS FOR CONTAMINANTS OF CONCERN.

MATCH LINE "C"
SEE SHEET 52

MATCH LINE STA. 1679+30.00
SEE SHEET 54

\DBCONN-99-MOTIF.LDN, \DBCONN-11-BORDER.LDN, \DBCONN-11-MOTIF.LDN, \DBCONN-11-LEGEND.LDN, \DBCONN-11-LAYOUT.LDN, \DBCONN-05-MOTIF.LDN, \DBCONN-06-MOTIF.LDN, \DBCONN-08-MOTIF.LDN, \DBCONN-10-MOTIF.LDN, \DBCONN-11-05-2012, 15:46:03 BONDHJ00 \IFS-2044\MM\VAULT-D-TRANS_07\2202_20866-00\CIVIL\CAD\99 ALL CONTRACTS\CONNS\9 SHEETS CONTRACT 11\DBCONN-11-911-HAZMAT1-16580.LDN

FILE NAME = #FILEL\$	USER NAME = #USER*	DESIGNED - JB	REVISED  ENTIRE SHEET JB	01/06/12
TENG TENG & ASSOCIATES, INC. ENGINEERS/ARCHITECTS/PLANNERS CHICAGO, ILLINOIS	PLOT SCALE = #SCALE*	DRAWN - MDN	REVISED -	
	PLOT DATE = #DATE*	CHECKED - ACL	REVISED -	
		DATE - 10/21/11	REVISED -	

STATE OF ILLINOIS
DEPARTMENT OF TRANSPORTATION
PROPOSED RELOCATED IL ROUTE 3 INTERCHANGE

PROPOSED I-70
CLEARING PLAN
STA. 165+00 TO STA. 179+00
SCALE: 1"=50' SHEET NO. 2 OF 7 SHEETS STA. TO STA.

F.A.P. RTE.	SECTION	COUNTY	TOTAL SHEETS	SHEET NO.
998	82-2-1K	ST. CLAIR	353	49
FED. ROAD DIST. NO.			ILLINOIS FED. AID PROJECT	
			CONTRACT NO. 76E06	