

F.A.I. RTE.	SECTION	COUNTY	TOTAL SHEETS	SHEET NO.
55/70	82-1DM	ST. CLAIR	35	1

D-98-058-08

FOR INDEX OF SHEETS AND STANDARDS SEE SHEET NO. 2

STATE OF ILLINOIS

DEPARTMENT OF TRANSPORTATION

DIVISION OF HIGHWAYS

PROPOSED HIGHWAY PLANS

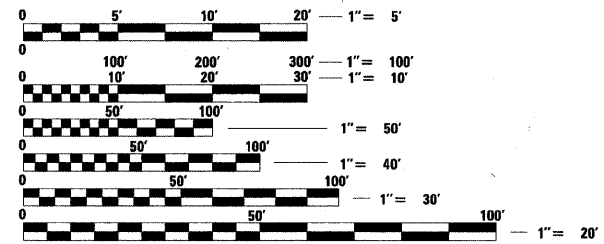
F.A.I. 55/70
 SECTION 82-1DM
 DEMO 0.1 MILE WEST OF EXCHANGE AVE
 ST. CLAIR COUNTY
 C-98-023-12



Danny B. Manojlovski 12/7/11
 DANNY B. MANOJLOVSKI REGISTERED PROFESSIONAL ENGINEER OF ILLINOIS
 LICENSE EXPIRES 11/30/2013
 SHEET RANGE 1-35

Oranit Pimsarn 12-07-11
 ORANIT PIMSARN REGISTERED PROFESSIONAL ENGINEER OF ILLINOIS
 LICENSE EXPIRES 11/30/2013
 SHEET RANGE 1-35

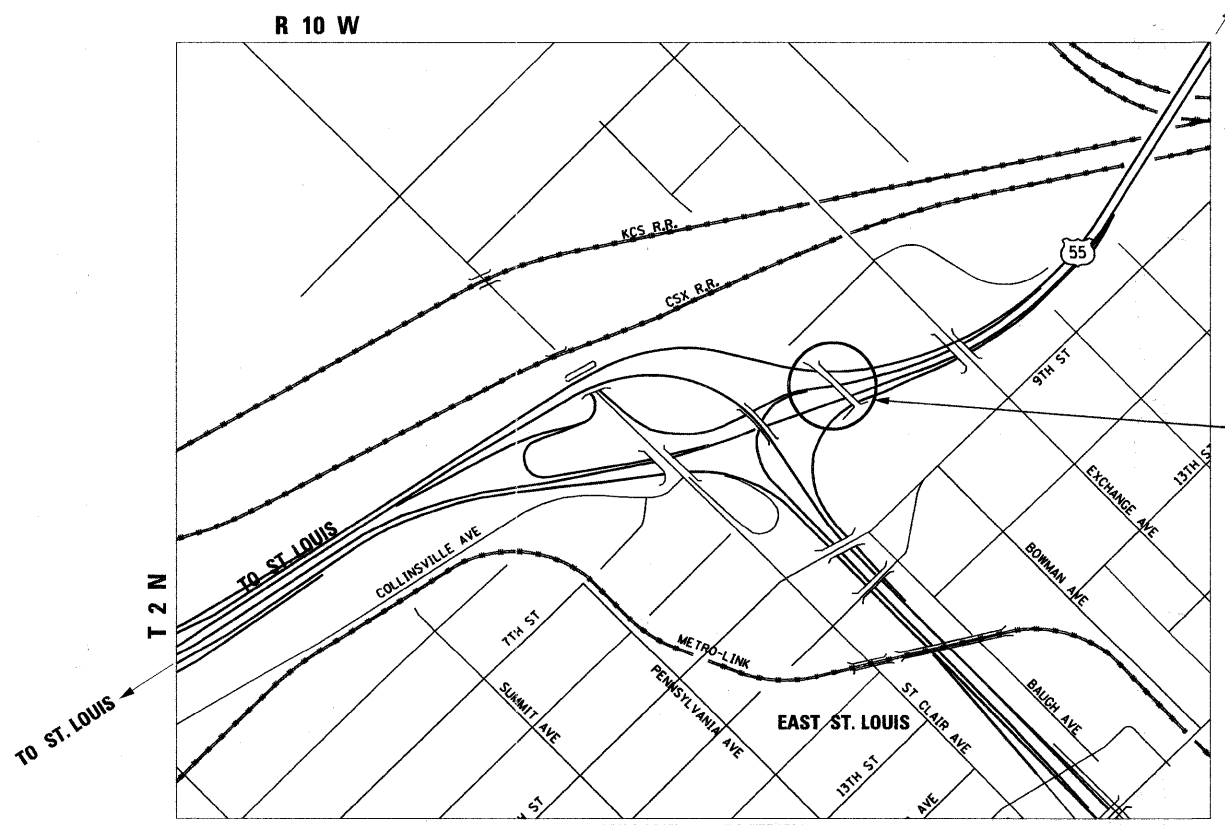
MICROFILMED _____
 REEL NUMBER _____
 AWARDED _____
 RESIDENT ENGINEER _____
 AS BUILT CHANGES WERE MADE ON THE FOLLOWING SHEETS _____



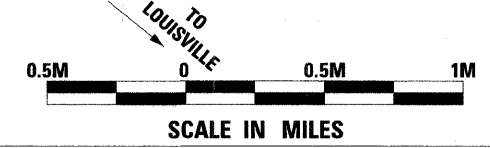
FULL SIZE PLANS HAVE BEEN PREPARED USING STANDARD ENGINEERING SCALES. REDUCED SIZED PLANS WILL NOT CONFORM TO STANDARD SCALES. IN MAKING MEASUREMENTS ON REDUCED PLANS, THE ABOVE SCALES MAY BE USED.

J.U.L.I.E.
 JOINT UTILITY LOCATION INFORMATION FOR EXCAVATION
 1-800-892-0123
 or 811

PROJECT ENGINEER MIKE PRITCHETT
 SQUAD LEADER CHAD SANDERS
 CONTRACT NO. 76F29



TOWNSHIP: CANTEEN
 LOCATION MAP
 EXISTING STRUCTURES NO. 1
 (X: 2456342.1490, Y: 14042029.5007)
 (X: 2456398.4560, Y: 14041975.6538)
 (X: 2456459.9745, Y: 14041912.3760)



JOINT UTILITY LOCATION
 INFORMATION FOR EXCAVATIONS
 PHONE: (800) 892-0123

STATE OF ILLINOIS
 DEPARTMENT OF TRANSPORTATION
 DIVISION OF HIGHWAYS

SUBMITTED *Dec 2nd* 20 *11*

James [Signature]
 DEPUTY DIRECTOR OF HIGHWAY, REGION ENGINEER

December 9 20 11
Scott E. Stitt P.E.
 acting ENGINEER OF DESIGN AND ENVIRONMENT

December 9 20 11
William R. Fienler
 interim DIRECTOR OF HIGHWAYS, CHIEF ENGINEER

PRINTED BY THE AUTHORITY
 OF THE STATE OF ILLINOIS

AECOM

PLOT DATE: *DATE-TIME*

DON-SPEC
 DATE-TIME
 REF
 REF