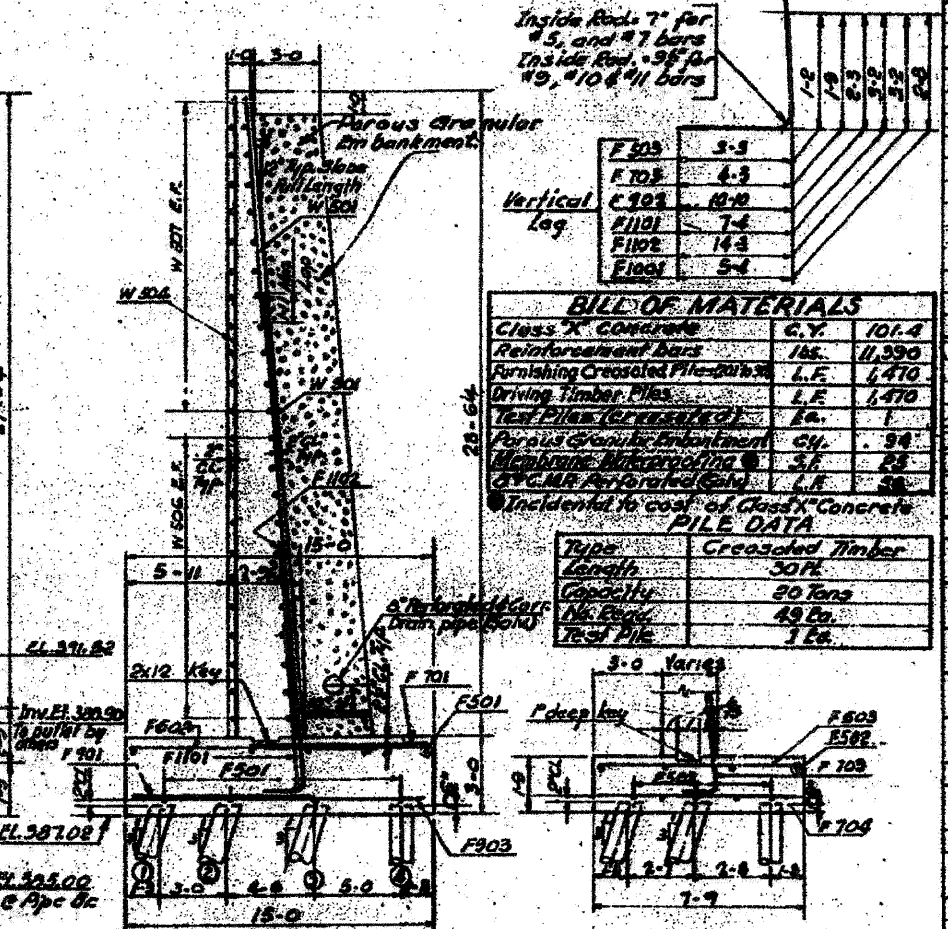
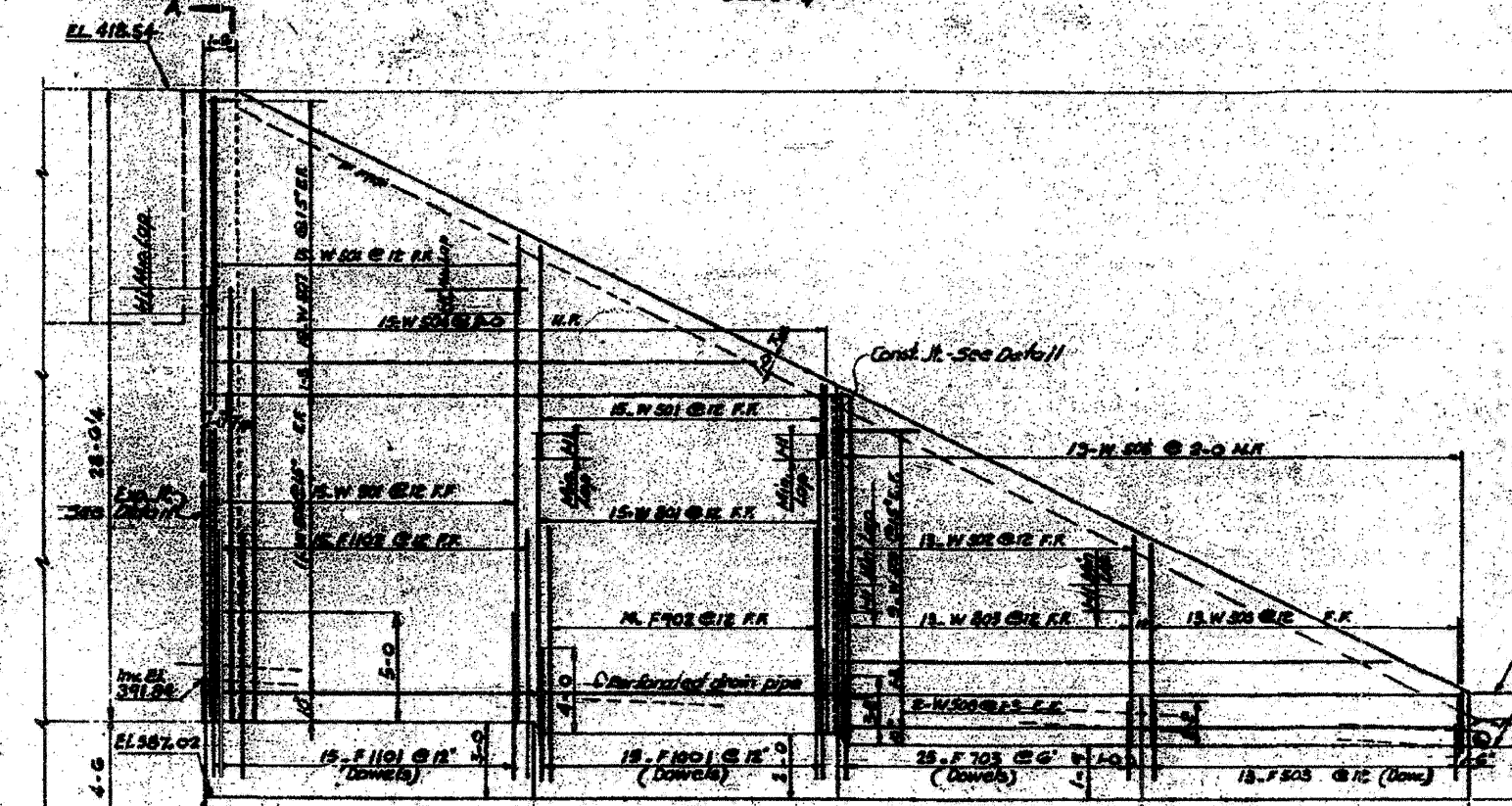
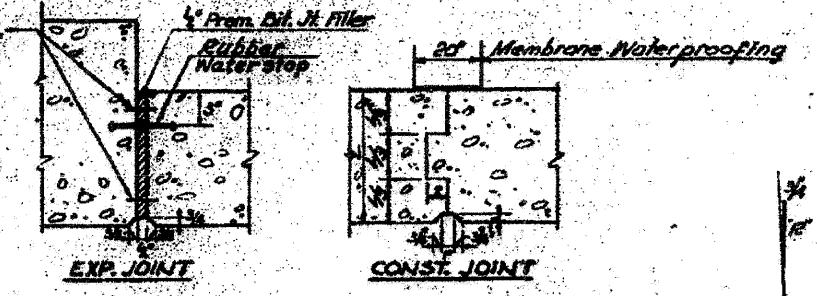
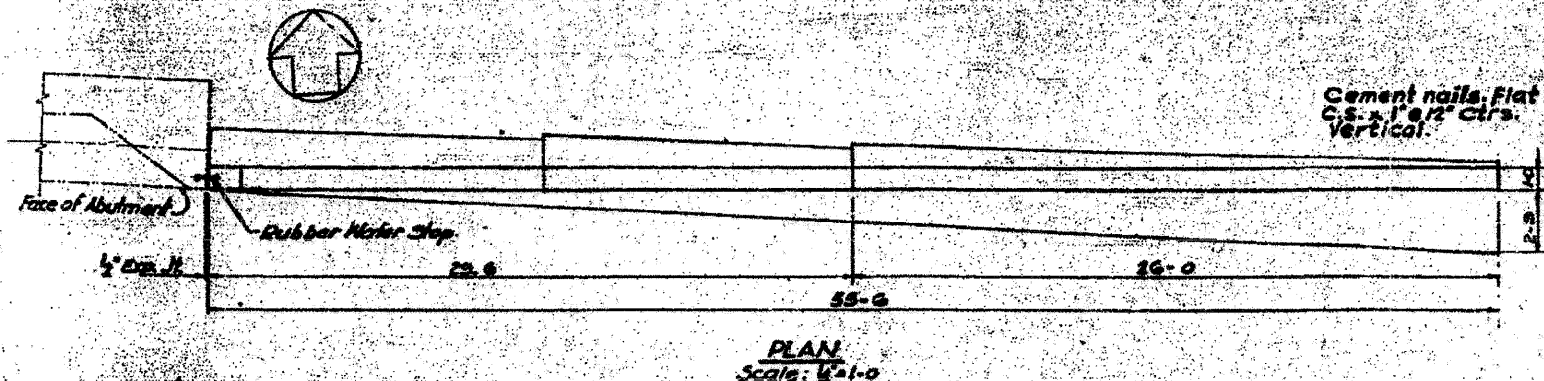


PROJECT NO.	SECTION	COUNTY	TOTAL SHEETS	SHEET NO.
F&P 1061-234	51-0611	ST. CLAIR	35	27
DATE: JULY 1960 CHICAGO, ILLINOIS SHEET NO. 7				



Vertical Lag

F 505	5-5
F 705	4-3
C 905	10-10
F 1101	7-4
F 1102	14-3
F 1103	5-4

BILL OF MATERIALS

Class X Concrete	C.Y.	101.4
Reinforcement Bars	lbs.	11,390
Forming Creosoted Pile-Drifts	L.F.	1,470
Driving Timber Piles	L.F.	1,470
Test Piles (Represented)	EA.	1
Porous Granular Embankment	CY.	94
Membrane Waterproofing	S.F.	23
C.V.C.M.R. (Grouted Only)	L.R.	20

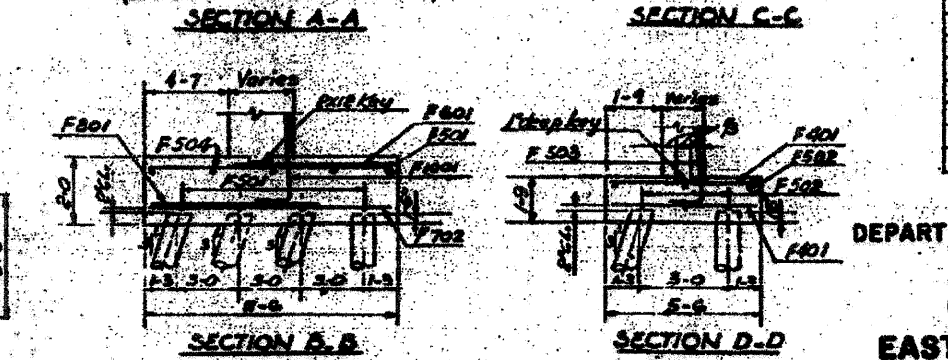
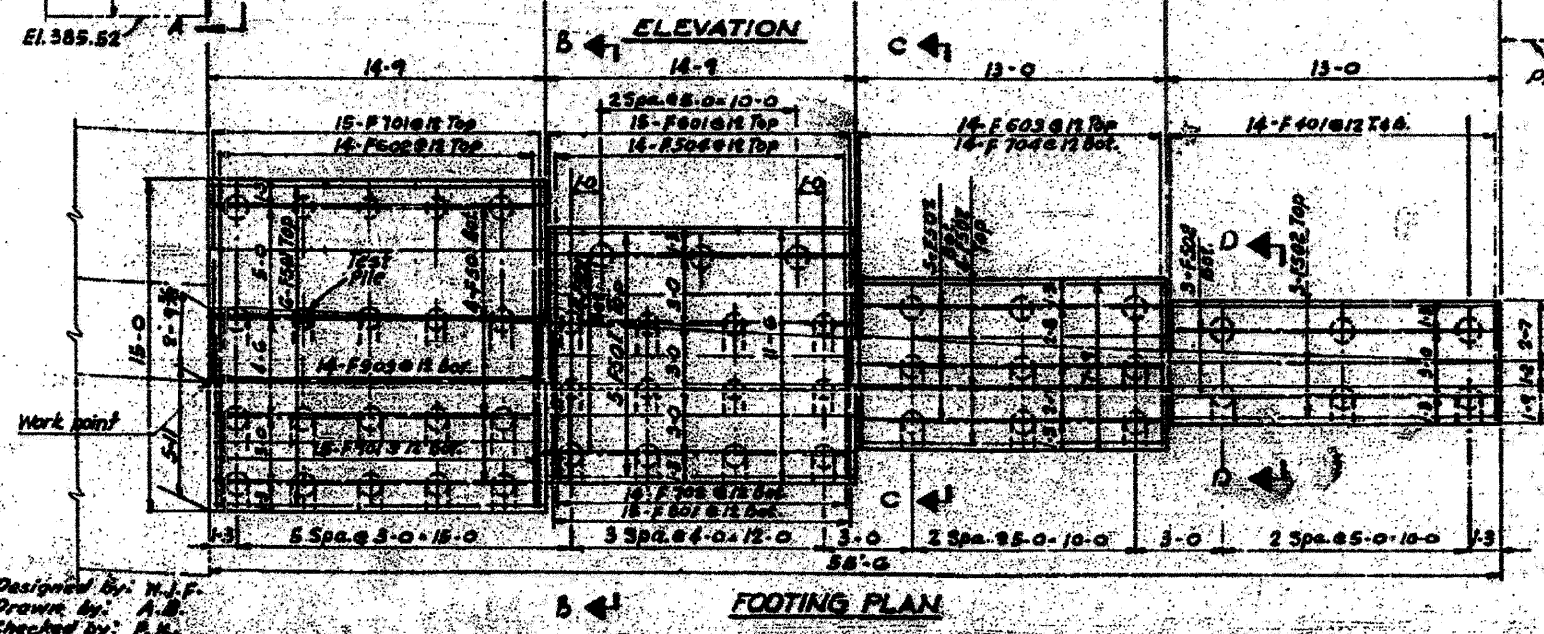
Incidental to cost of Class X Concrete

PILE DATA

Type	Creosoted Timber
Length	50 FT.
Capacity	20 Tons
No. Piles	49 Ea.
Test Pile	1 Ea.

BAR SCHEDULE

Mark	No. Rep.	Size	Length	Shape
F 401	28	4	52	—
F 501	19	5	14-6	—
F 502	13	5	12-9	—
F 503	13	5	4-2	—
F 504	14	5	11-9	—
F 601	15	6	7-0	—
F 602	14	6	14-9	—
F 603	14	6	7-6	—
F 701	15	7	9-0	—
F 702	14	7	11-3	—
F 703	26	7	5-8	—
F 704	14	7	7-6	—
F 801	15	8	7-9	—
F 802	14	8	9-1	—
F 803	14	8	16-9	—
F 1101	15	10	7-8	—
F 1102	15	11	10-1	—
F 1103	16	11	17-0	—
W 501	2 series ea. 16 bars	3-6 to 10-6	incr. 6"	—
W 502	1 series ea. 13 bars	3-6 to 5-0	incr. 6"	—
W 503	1 series ea. 15 bars	2-9 to 4-6	incr. 6"	—
W 504	1 series ea. 15 bars	11-2 to 12-2	incr. 1'-0"	—
W 505	1 series ea. 13 bars	2-8 to 1-0	incr. 1'-0"	—
W 506	22	30-9	—	—
W 507	2 series ea. 12 bars	11-6 to 2-0	incr. 2'-6"	—
W 508	6	25-9	—	—
W 509	2 series ea. 9 bars	4-8 to 10-6	incr. 2'-6"	—
W 801	15	8	13-9	—
W 803	12	8	7-6	—
W 901	18	9	20-6	—



NOTES
For General Notes See SH.#1
For Location See SH.#2

STATE OF ILLINOIS
DEPARTMENT OF PUBLIC WORKS & BLDGS.
DIVISION OF HIGHWAYS
CITY OF EAST ST. LOUIS
EAST ST. LOUIS EXPRESSWAY
L & N R.R. OVER WEST BOUND EXPWAY,
RAMP 1, EAST BOUND EXPWAY AND RAMP 1
NORTHEAST WINGWALL
H. W. LOCHNER, INC.
ENGINEERS
DATE JULY 1960 CHICAGO, ILLINOIS SHEET NO. 7

Designed By: H.J.F.
Drawn By: A.B.
Checked By: R.H.

FILE NAME = 08TR1-76F29-SHT-LNRRB-ridge_07.dgn
USER NAME = searsb
PLOT SCALE = 1/8" = 1'-0"
PLOT DATE = 11/22/2011

DESIGNED	OP	REVISED	-
DRAWN	OP	REVISED	-
CHECKED	DBM	REVISED	-
DATE	11-23-11	REVISED	-

STATE OF ILLINOIS
DEPARTMENT OF TRANSPORTATION

EXISTING BRIDGE PLAN - L&N RR BRIDGE 07

SCALE: NONE SHEET NO. 8 OF 26 SHEETS STA. TO STA.

F.A.I. RTE.	SECTION	COUNTY	TOTAL SHEETS	SHEET NO.
55/70	82-10M	ST. CLAIR	35	17
FED. ROAD DIST. NO.		[ILLINOIS] FED. AID PROJECT		CONTRACT NO. 76F29