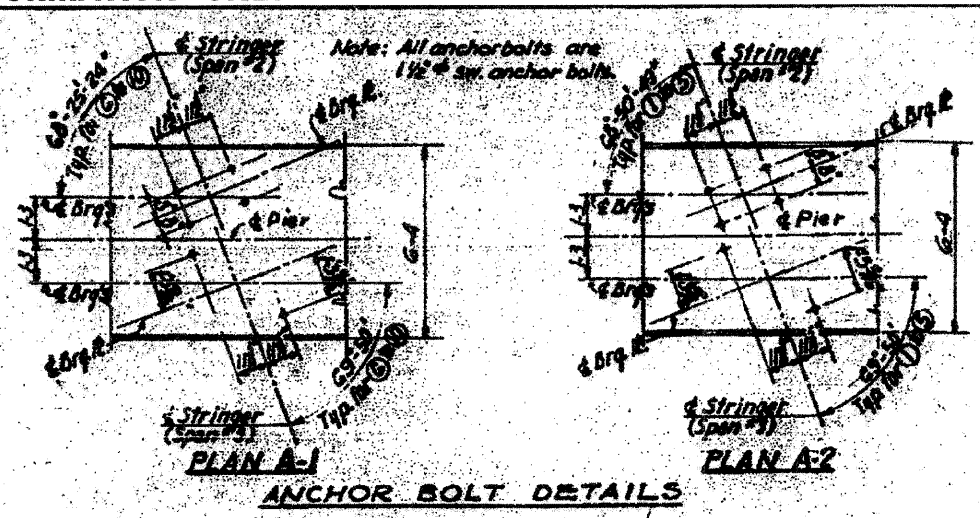
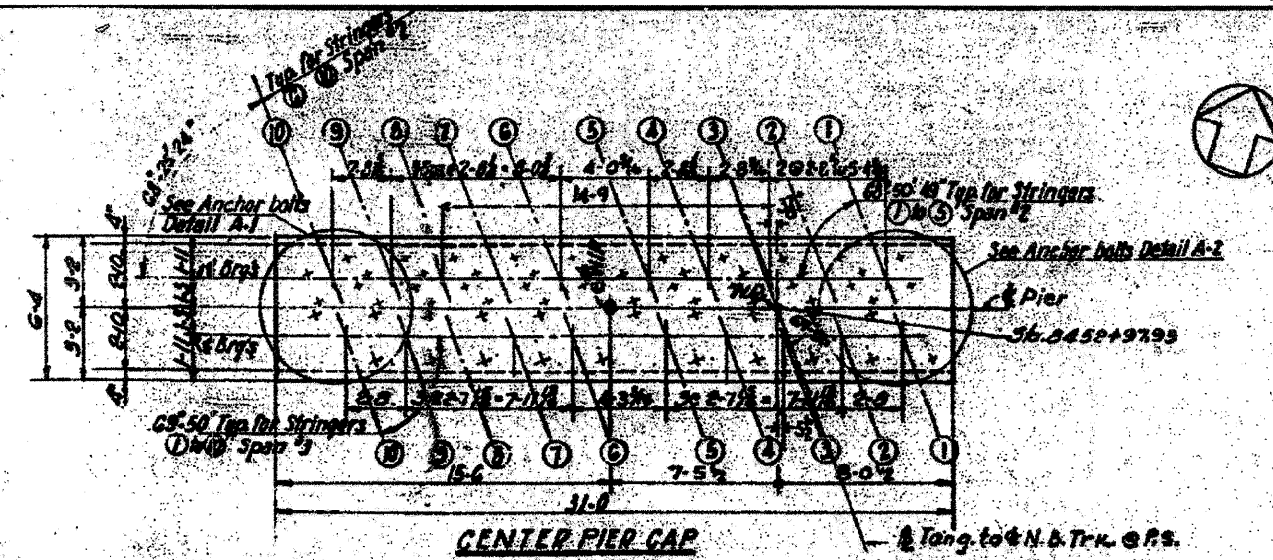
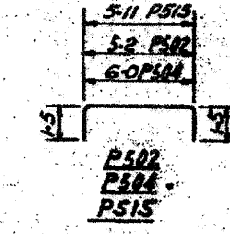
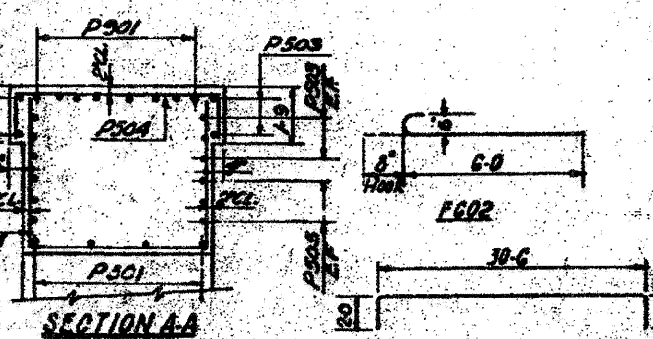
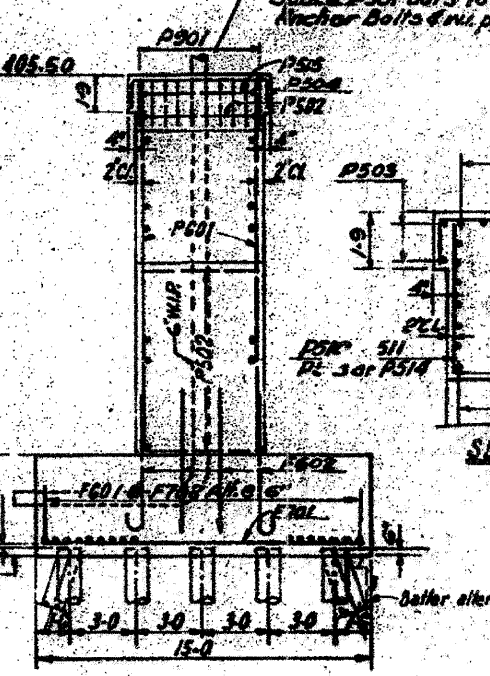
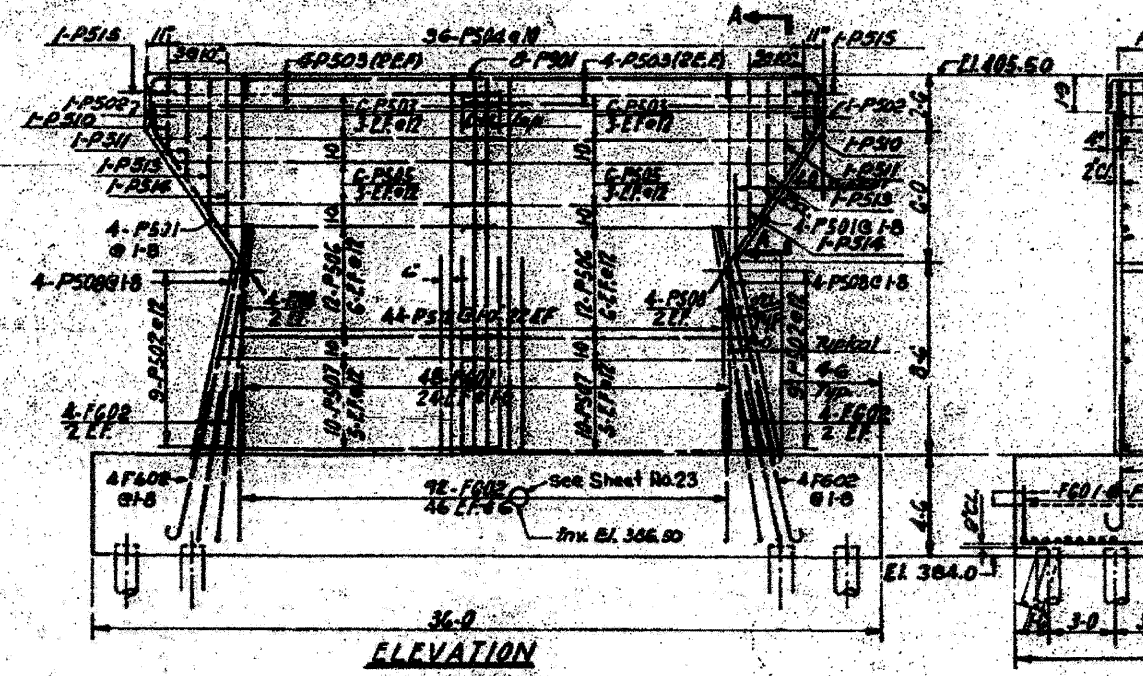


PROJECT NO. 7
 COUNTY ST. CLAIR



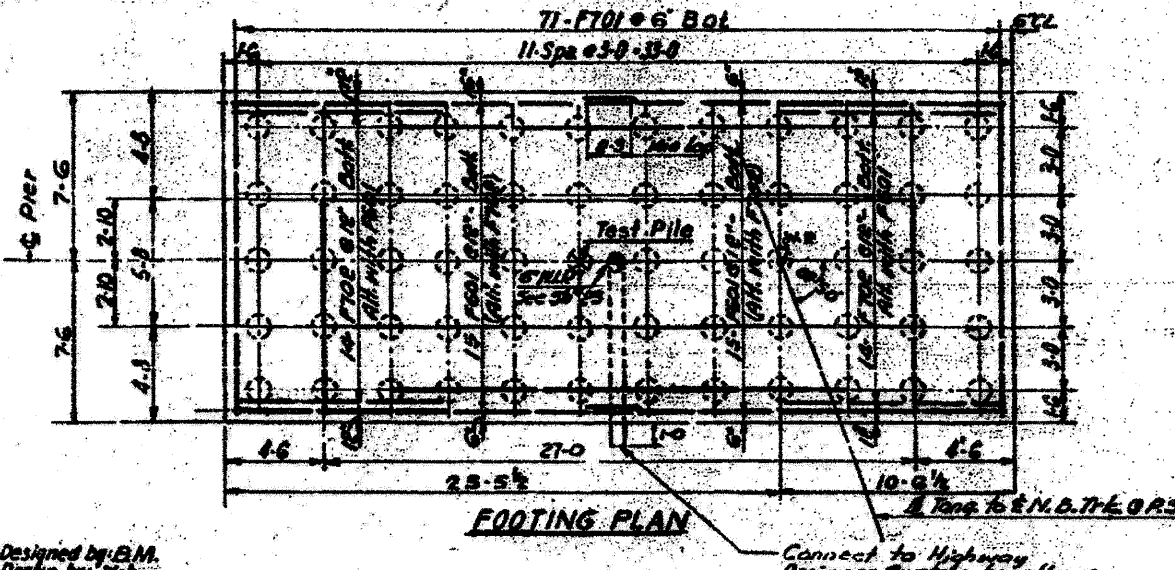
BAR LIST				
Mark	No.	Qty	Size	Length
F601	30	7	19-0	
F602	108	76	6-0	
F701	71	7	19-0	
F702	28	7	10-3	
P501	8	5	10-0	
P502	20	25	8-0	
P503	20	25	16-5	
P504	36	25	8-10	
P505	12	25	16-9	
P506	24	25	15-1	
P507	28	25	14-1	
P508	16	25	10-3	
P510	2	25	11-0	
P511	2	25	14-6	
P512	14	25	8-6	
P513	8	25	17-0	
P514	2	25	15-6	
P515	2	25	8-3	
P601	48	46	16-0	
P901	8	9	36-6	



BILL OF MATERIALS		
Class	Qty	Unit
Class A Concrete	106.5	CY
Reinforcement bars	165	Lbs
Furnishing concrete piles	1.1	LF
Driving concrete piles	8.360	LF
Test Pile (Concrete)	1	EA

Notes
 See Sh*1 for Gen Notes
 See Sh*2 for Location
 See Sh*2,3 for Drainage Details
 Care shall be taken in placing reinforcement bars so as to clear anchor bolts.
 For pile details see Sheet No. 26

PILE DATA	
Type:	Concrete Piles
Estimated Length	40
Capacity	40 Tons
No. Required	59
Test Pile	1



Designed by: E.M.
 Drawn by: N.K.
 Checked by: J.M.

STATE OF ILLINOIS
 DEPARTMENT OF PUBLIC WORKS & BLDGS.
 DIVISION OF HIGHWAYS
 CITY OF EAST ST. LOUIS
EAST ST. LOUIS EXPRESSWAY
 L. & N. R.R. OVER WEST SOUND EXPWAY,
 RAMP "L", EAST SOUND EXPWAY AND RAMP "Y"
 CENTER PIER
 H. W. LOCHNER, INC.
 ENGINEERS
 CHICAGO, ILLINOIS
 DATE JULY 1960 SHEET NO. 6