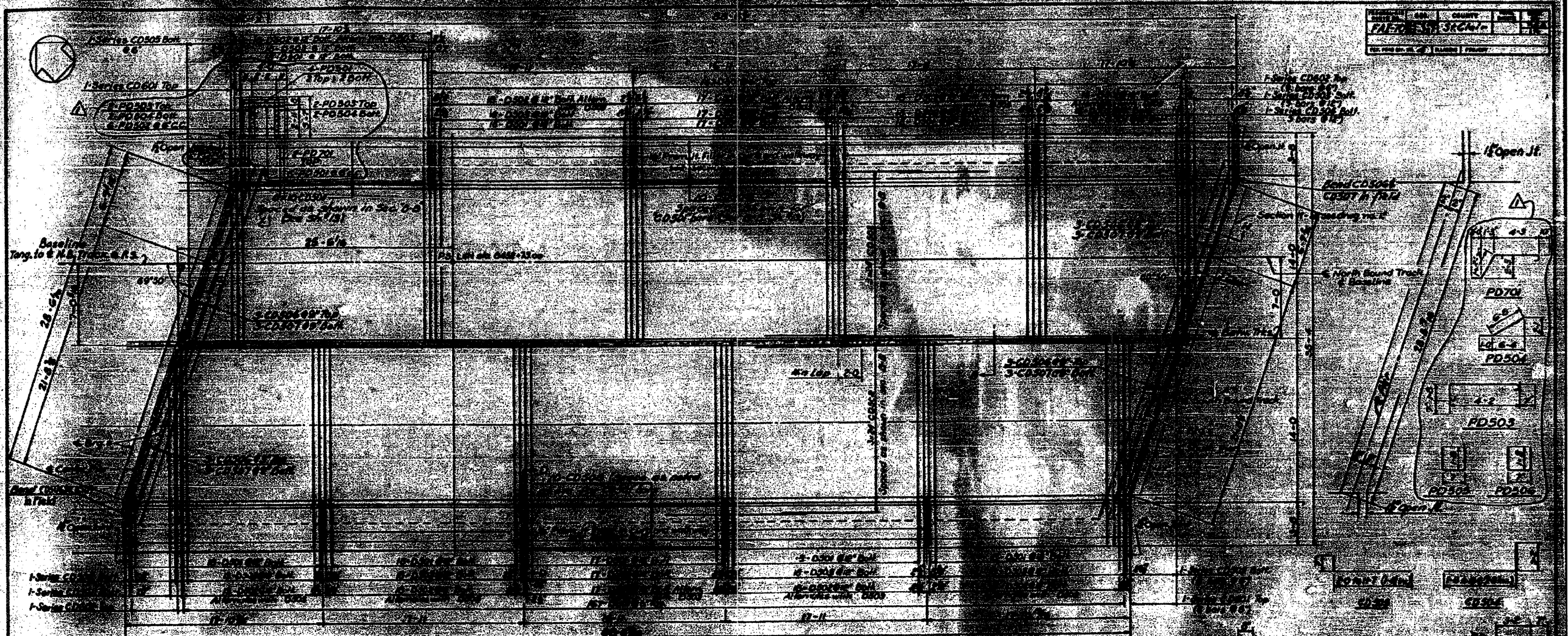
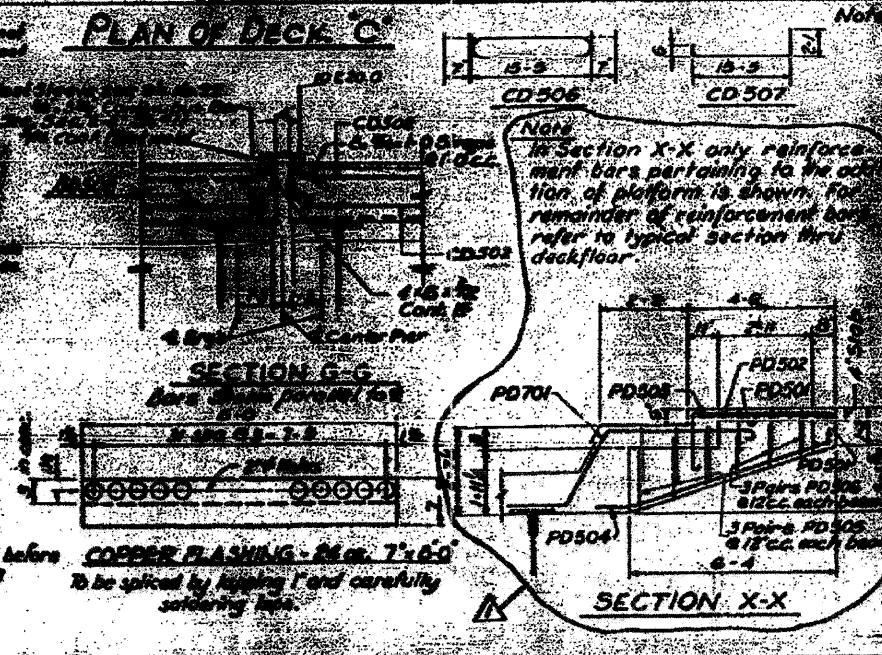
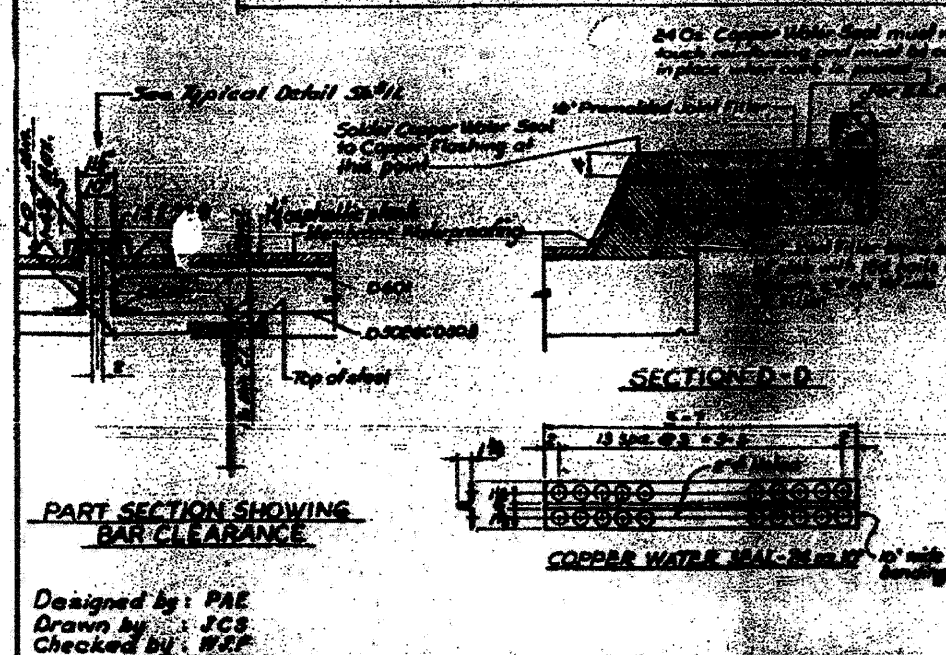


PROJECT NO.	400	COUNTY	ST. LOUIS
FACTOR	3.00		
DATE	11/23/11		



PLAN OF DECK C



SCHEDULE

NO.	DESCRIPTION	QUANTITY	UNIT
1	CD505	15.0	LINEAL FEET
2	CD506	15.6	LINEAL FEET
3	CD507	15.6	LINEAL FEET
4	PD701	15.6	LINEAL FEET
5	PD502	15.6	LINEAL FEET
6	PD503	15.6	LINEAL FEET
7	PD504	15.6	LINEAL FEET
8	PD505	15.6	LINEAL FEET

NOTES

1. Check and verify the S&P 22.
2. For S&P details see S&P 12.
3. For Deck details see the Deck and S&P 22.
4. For S&P details see S&P 12.
5. For General Notes see S&P 12.

STATE OF ILLINOIS
DEPARTMENT OF PUBLIC WORKS & HIGHWAYS
DIVISION OF HIGHWAYS
CITY OF EAST ST. LOUIS
EAST ST. LOUIS EXPRESSWAY
L & N R.R. OVER WEST BOUND BRIDGE
S&P C, EAST BOUND EXPRESSWAY AND RAMP
DECK C AND DETAILS

DESIGNED BY: PAE
DRAWN BY: JCS
CHECKED BY: WFF

DATE: JULY 2008 CHICAGO, ILLINOIS SHEET NO. 14A