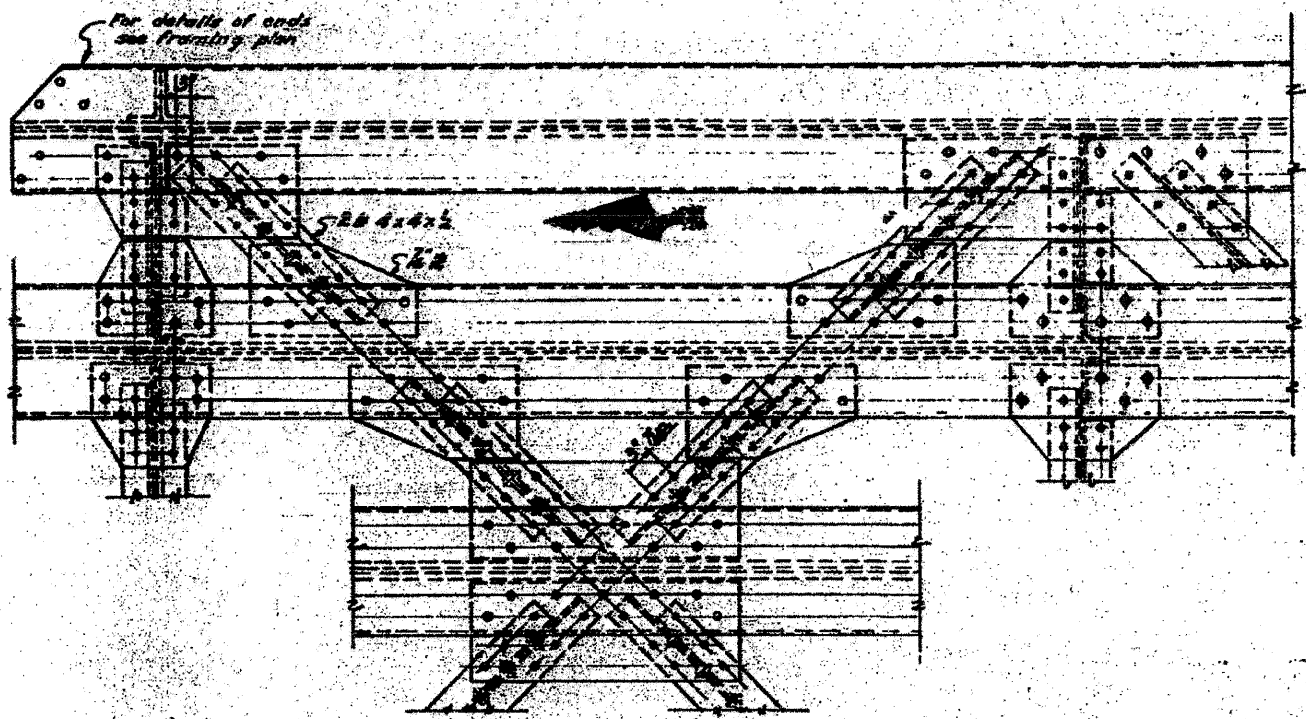
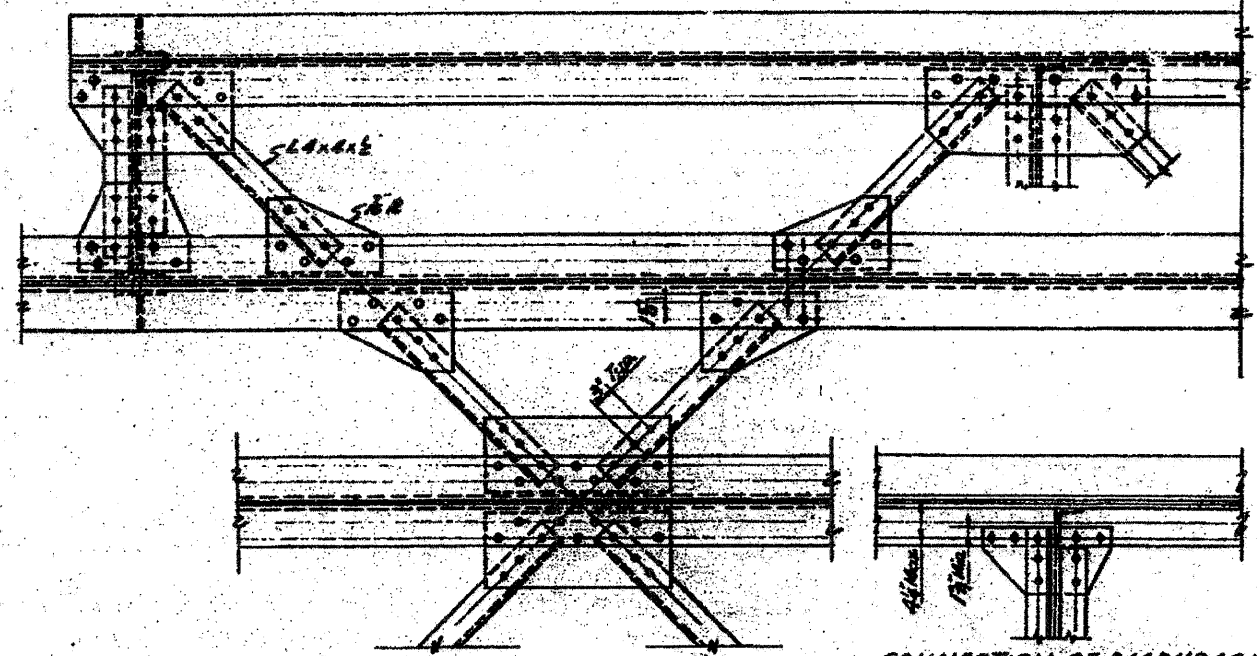


PROJECT NO.	SECTION	COUNTY	TOTAL SHEETS	SHEET NO.
FAZ-70633	82-IDM	St. Clair	35	31
FED. ROAD DIST. NO. 7 ILLINOIS FEDERAL AID PROJECT				

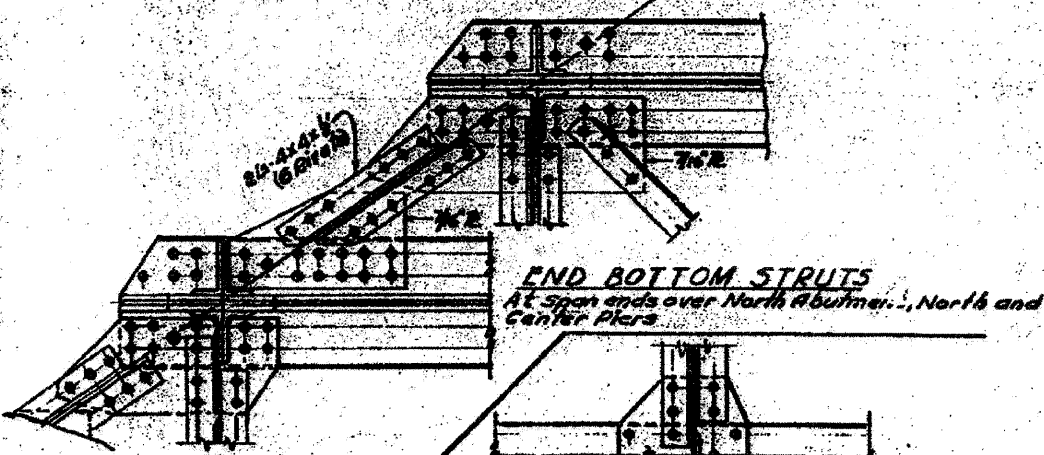


TOP LATERAL BRACING SPAN 1, 2 & 3

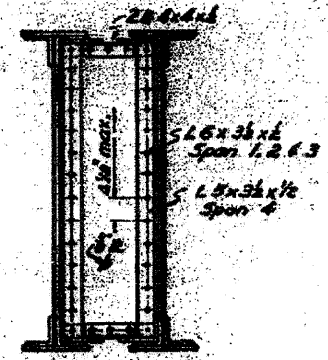


TOP LATERAL BRACING SPAN 4

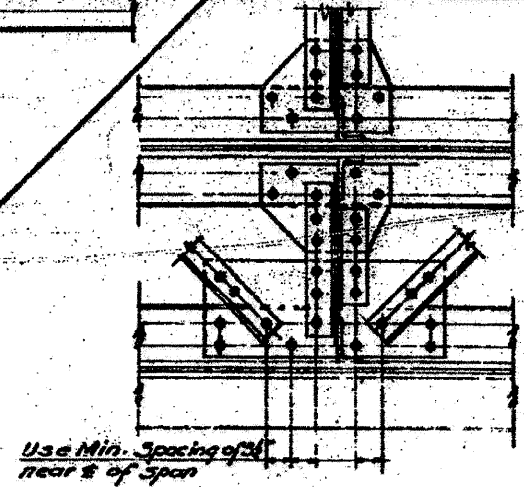
CONNECTION OF DIAPHRAGM TO BOTTOM FLANGE FOR SPAN 4



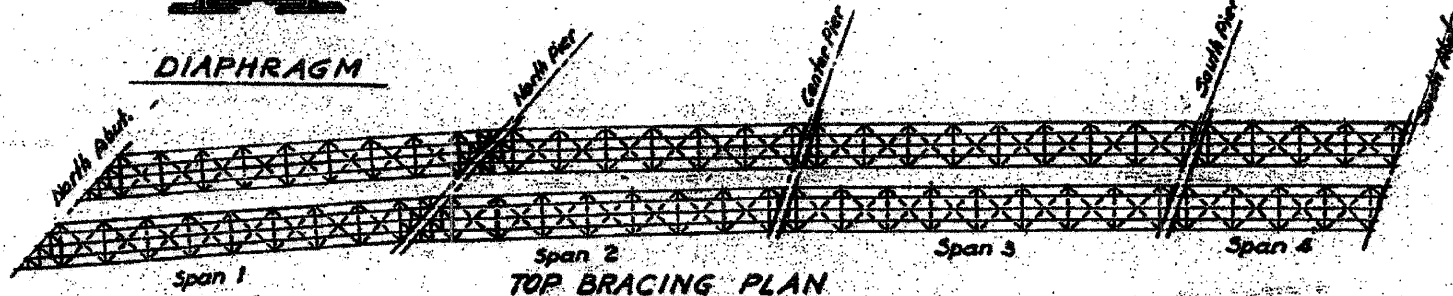
END BOTTOM STRUTS At Span ends over North Abutment, North and Center Piers



DIAPHRAGM



BOTTOM LATERAL BRACING SPAN 1, 2 & 3



TOP BRACING PLAN



BOTTOM BRACING PLAN

NOTES  
Edge distance not more than 2" or less than 1 1/2"  
Laterals shall have one rivet pass through lateral and flange.

STATE OF ILLINOIS  
DEPARTMENT OF PUBLIC WORKS & BLDGS.  
DIVISION OF HIGHWAYS  
&  
CITY OF EAST ST. LOUIS  
EAST ST. LOUIS EXPRESSWAY  
L. & N. R.R. OVER WEST BOUND EXPWAY, RAMP 'L' EAST BOUND EXPWAY AND RAMP 'N'  
LATERAL DETAILS  
H. W. LOCHNER, INC.  
ENGINEERS  
DATE JULY 1960 CHICAGO, ILLINOIS SHEET NO. 31

Designed by  
Drawn by  
Checked by

FILE NAME = DBTRI-76F29-SHT-LNRRB-ridge\_21.dgn

USER NAME = searsb  
DESIGNED OP  
DRAWN OP  
CHECKED DBM  
DATE 11-23-11

REVISIONS  
REVISED -  
REVISED -  
REVISED -  
REVISED -

STATE OF ILLINOIS  
DEPARTMENT OF TRANSPORTATION

EXISTING BRIDGE PLAN - L&N RR BRIDGE 21

SCALE: NONE SHEET NO. 22 OF 26 SHEETS STA. TO STA.

F.A.I. RTE.	SECTION	COUNTY	TOTAL SHEETS	SHEET NO.
55/70	82-IDM	ST. CLAIR	35	31
CONTRACT NO. 76F29				
FED. ROAD DIST. NO. [ILLINOIS] FED. AID PROJECT				