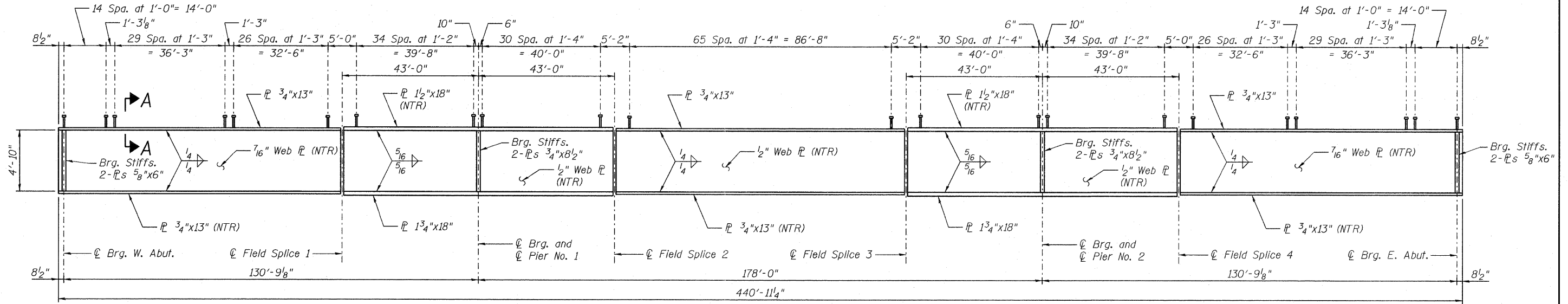
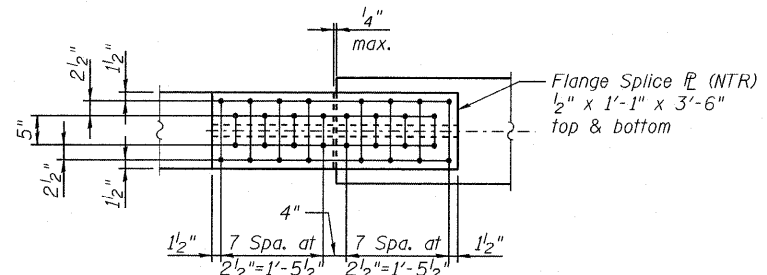


P:\C\26703\700cadd\1095str\039-0074978049-SteelDetails.dgn
 19-OCT-2011
 15:47



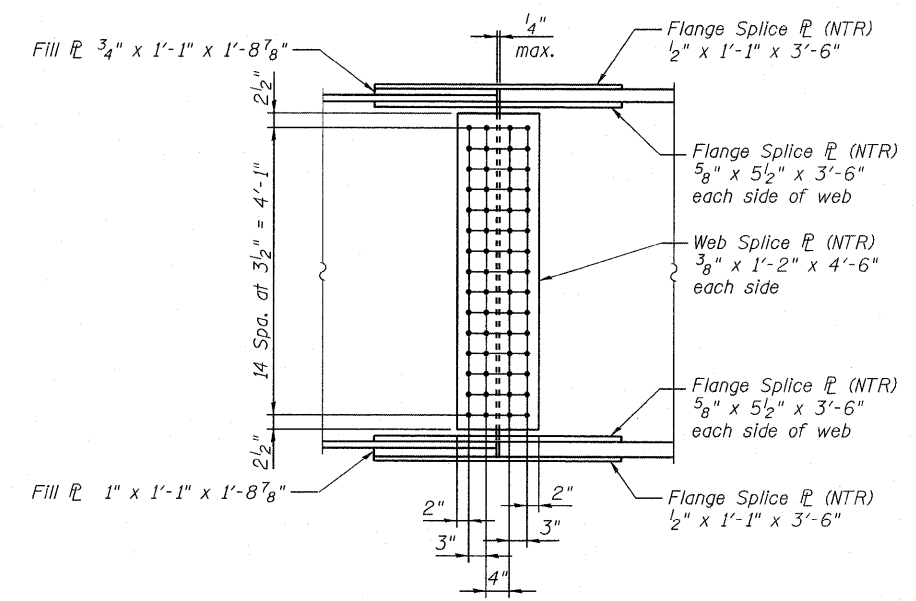
GIRDER ELEVATION

"NTR" denotes plates to which notch toughness requirements are applicable.



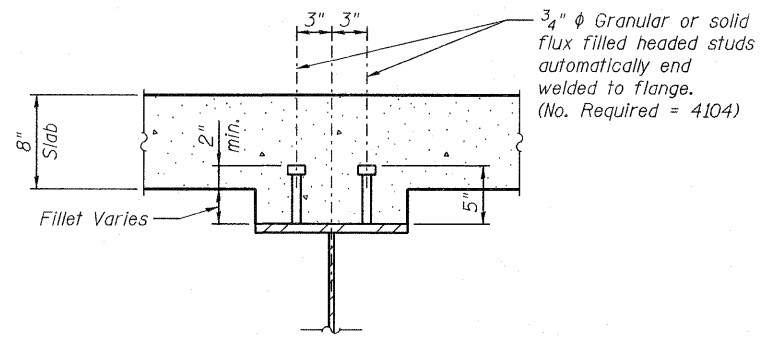
TOP AND BOTTOM SPLICE PLATES

NOTE:
 Structural steel was furnished in Contract 78283 and is shown for information only. Stud Shear Connectors and erection are included in Contract 78049.



SPLICE DETAIL

(24 Required)



SECTION A-A

Notes:
 Load carrying components designated "NTR" shall conform to the Supplemental Requirements for Notch Toughness, Zone 2.
 Structural steel shall conform to the requirements of AASHTO M270 Grade 50W except as noted.
 All bolts are 7/8" phi ASTM A325 high strength bolts in 15/16" phi holes.

JACOBS	USER NAME =	DESIGNED - B. ERSCHEN	REVISED -	STATE OF ILLINOIS DEPARTMENT OF TRANSPORTATION	GIRDER DETAILS STRUCTURE NO. 039-0074	F.A.P. RTE. 686	SECTION 114B-1	COUNTY JACKSON	TOTAL SHEETS 97	SHEET NO. 114	
	PLOT DATE = 19-OCT-2011	CHECKED - M. CRONIN	REVISED -			SHEET NO. 18 OF 35 SHEETS		CONTRACT NO. 78049		ILLINOIS FED. AID PROJECT	
	FILE NAME=039-0074978049-SteelDetails.dgn	DRAWN - C. SALLADE	REVISED -								
		CHECKED - J. SMITH	REVISED -								