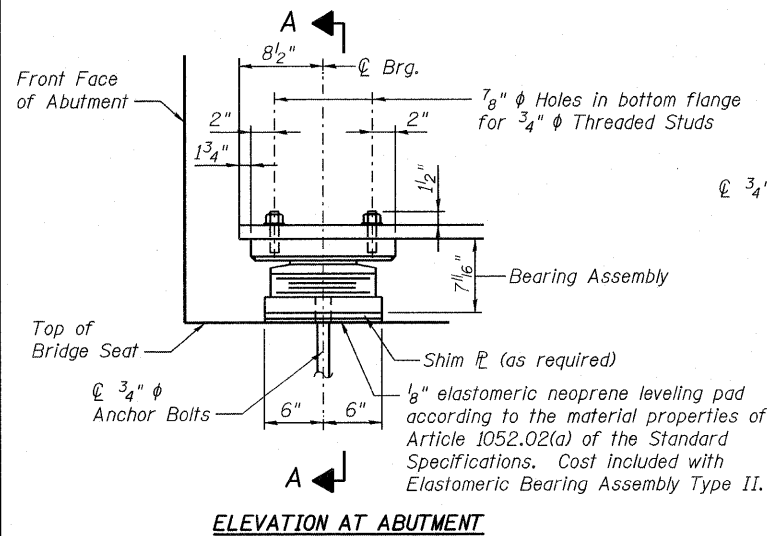
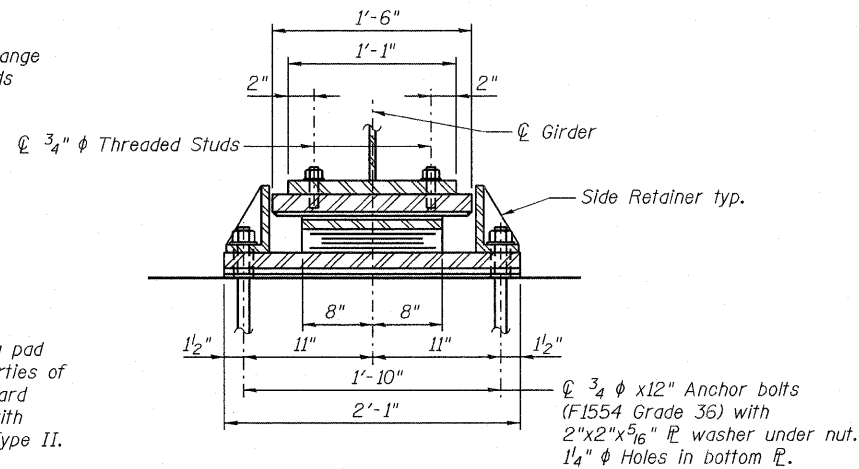


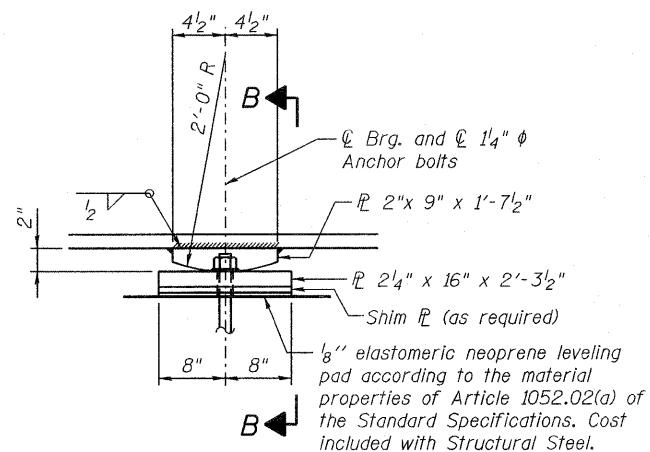
19-OCT-2011 15:47 FILENAME=039-0074978049-Bearing Details.dgn



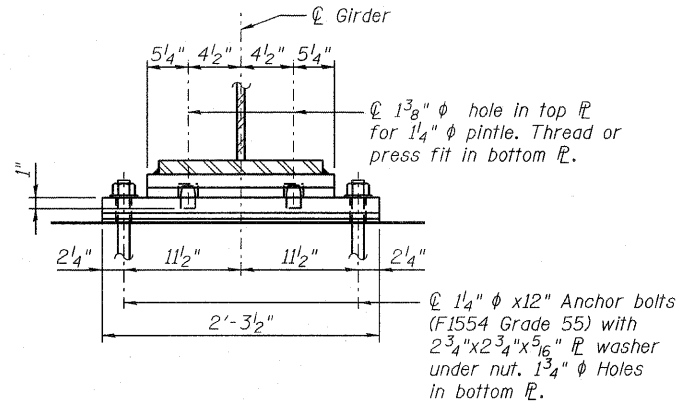
ELEVATION AT ABUTMENT



SECTION A-A



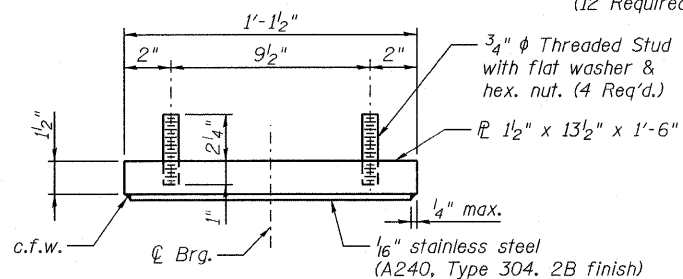
ELEVATION AT PIER



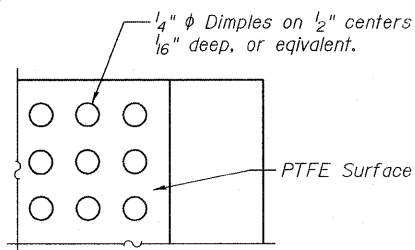
SECTION B-B

**TYPE II ELASTOMERIC EXPANSION BEARING
AT WEST AND EAST ABUTMENTS**

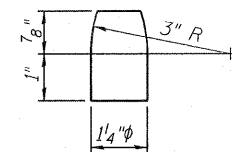
(12 Required Total)



TOP BEARING ASSEMBLY



PLAN-PTFE SURFACE



PINTLE

FIXED BEARING AT PIER 1 AND PIER 2

(12 Required Total)

Notes:
Anchor bolts shall be ASTM F1554 all-thread (or an Engineer-approved alternate material) of the grade(s) and diameter(s) specified.

The corresponding specified grade of AASHTO M314 anchor bolts may be used in lieu of ASTM F1554.

Anchor bolts at fixed bearings may be either cast in place or installed in holes drilled after the supported member is in place.

Anchor bolts for Type II bearings shall be placed in holes drilled in the concrete through holes in the bottom bearing plate after members are in place. Side retainers shall be placed after bolts are installed.

Drilled and set anchor bolts shall be installed according to Article 521.06 of the Standard Specifications.

Side retainers and other steel members required for the elastomeric bearing assembly shall be included in the cost of Elastomeric Bearing Assembly, Type II.

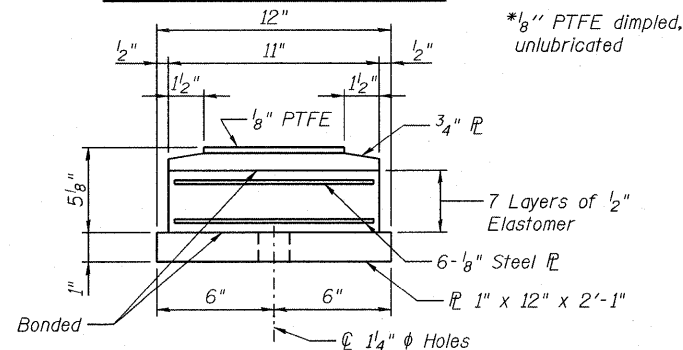
The 1/8 inch PTFE sheet shall be bonded directly to the top steel plate with a two-component, medium viscosity epoxy resin, conforming to the requirements of the Federal Specification MMM-A-134, Type I. The bond agent shall be applied on the full area of the contact surfaces.

Bonding of 1/8 inch PTFE sheet during vulcanizing process will be permitted provided the process and method of adjusting assembly height is approved by the Engineer.

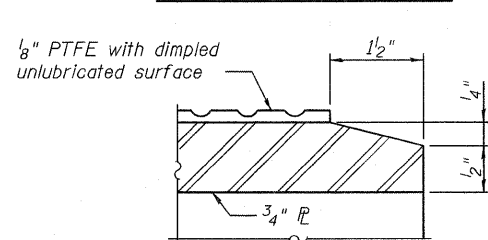
The anchor bolt sizes and grades shown constitute a calculated seismic structural fuse. Substitution of higher diameter and/or grade anchor bolts will not be allowed.

The structural steel of the bearing assembly shall conform to the requirements of AASHTO M270 Grade 50W.

Two 1/8 inch adjusting shims shall be provided for each bearing in addition to all other plates or shims and placed as shown on bearing details.



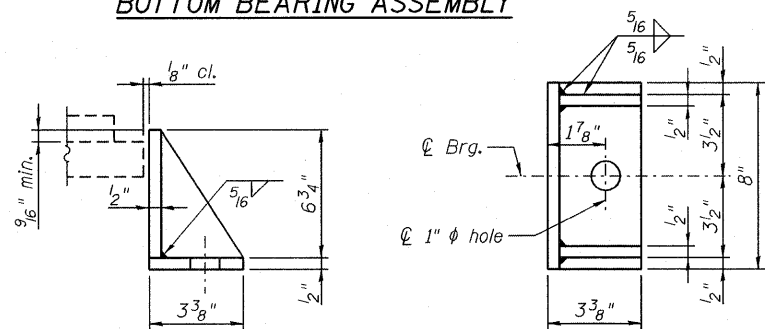
BOTTOM BEARING ASSEMBLY



SECTION THRU PTFE

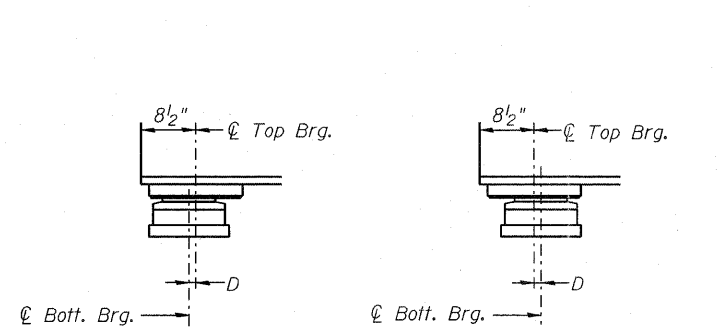
PLANNED SHIMS TABLE

Location	G1	G2	G3	G4	G5	G6
West Abutment	-	-	-	1/8"	-	-
Pier 1	-	-	-	1/8"	-	-
Pier 2	-	-	-	1/8"	-	-
East Abutment	-	-	-	1/8"	-	-



SIDE RETAINER

Equivalent rolled angle with stiffeners will be allowed in lieu of welded plates.



BELOW 50°F.

(Move bott. brg. away from fixed brg.)

ABOVE 50°F.

(Move bott. brg. toward fixed brg.)

SETTING ANCHOR BOLTS AT EXP. BRG.

D = 1/8 inch per each 100 feet of expansion for every 15 degrees temperature change from the normal temperature of 50 degrees Fahrenheit.

NOTE:
Structural steel was furnished in Contract 78283 and is shown for information only. Anchor Bolts and bearing erection are included in Contract 78049.

BILL OF MATERIAL

Item	Unit	Total
Elastomeric Bearing Assembly Type II	Each	12
Anchor Bolts, 3/4"	Each	24
Anchor Bolts, 1 1/4"	Each	24

JACOBS

USER NAME =
PLOT DATE = 19-OCT-2011

DESIGNED - B. ERSCHEN
CHECKED - M. CRONIN
DRAWN - E. KRACK
CHECKED - F. CAMBA

REVISED -
REVISED -
REVISED -
REVISED -

**STATE OF ILLINOIS
DEPARTMENT OF TRANSPORTATION**

**BEARING DETAILS
STRUCTURE NO. 039-0074**

SHEET NO. 21 OF 35 SHEETS

F.A.P. RTE. 686 SECTION 114B-1 COUNTY JACKSON TOTAL SHEETS 100 SHEET NO. 114 CONTRACT NO. 78049

ILLINOIS FED. AID PROJECT

FILE NAME=039-0074978049-Bearing Details.dgn