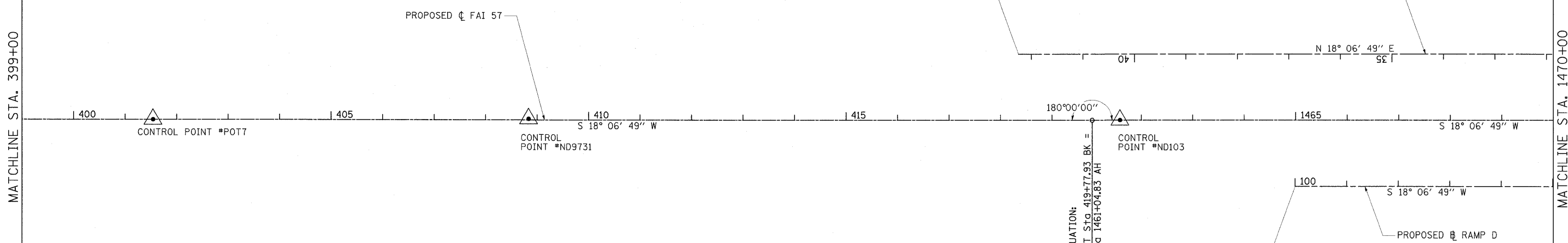
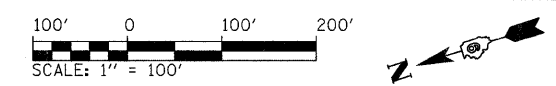


MATCHLINE STA. 399+00



MATCHLINE STA. 1470+00

- NOTES:**
1. SEE SHEET 90 FOR CURVE/COORDINATE DATA.
 2. HORIZONTAL CONTROL BASED ON THE ILLINOIS STATE PLANE COORDINATES NAD '83 (1997 ADJUSTMENT) EAST ZONE.
 3. VERTICAL CONTROL BASED ON NAVD (1988).
 4. HORIZONTAL AND VERTICAL CONTROL FOR THIS PROJECT BASED ON DIFFERENT DATUM THAN RECENTLY COMPLETED/ONGOING PROJECTS. CONTRACTOR SHALL ONLY USE CONTROL POINTS LISTED HEREIN FOR LAYOUT ON THIS CONTRACT AND VERIFY ACCURACY OF CONTROL LOCATED WITHIN ADJACENT PROJECTS PRIOR TO LAYOUT.
 5. CONTROL FOR HILLVIEW WAY SHEETS 123-135 SHALL BE BASED ON STAKEOUT COORDINATES LISED ON SHEET 129

FILE NAME = ...D978182-sht-ATB_001.dgn	USER NAME = Rob Heady	DESIGNED - MJO	REVISED -	STATE OF ILLINOIS DEPARTMENT OF TRANSPORTATION	ALIGNMENT, TIES AND BENCHMARKS INTERSTATE 57			F.A. RTE.	SECTION	COUNTY	TOTAL SHEETS	SHEET NO.
	PLCT SCALE = 100.0000' / IN.	CHECKED - BJD	REVISED -					* (X1-6-2HRK-2, HB-1.2; (X-1R-1	WILLIAMSON	968	85	
PLCT DATE = 10/7/2011	DATE - 10/07/11	REVISED -		SCALE: 1" = 100'	SHEET NO. OF SHEETS	STA. 370+00 TO STA. 1470+00	* F.A.I. 57 AND F.A.P. 331 CONTRACT NO. 78182 ILLINOIS FED. AID PROJECT					