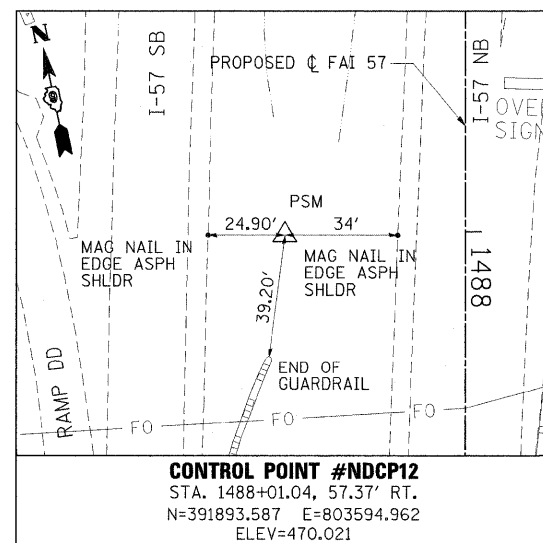
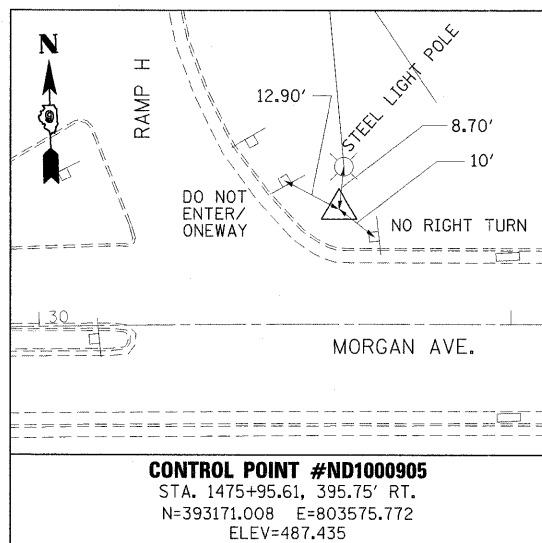
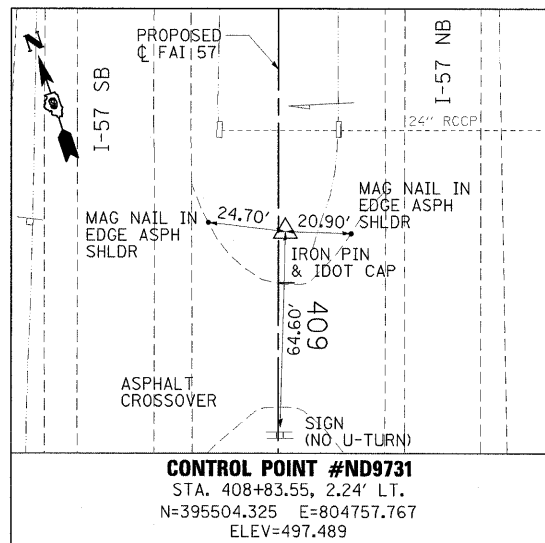
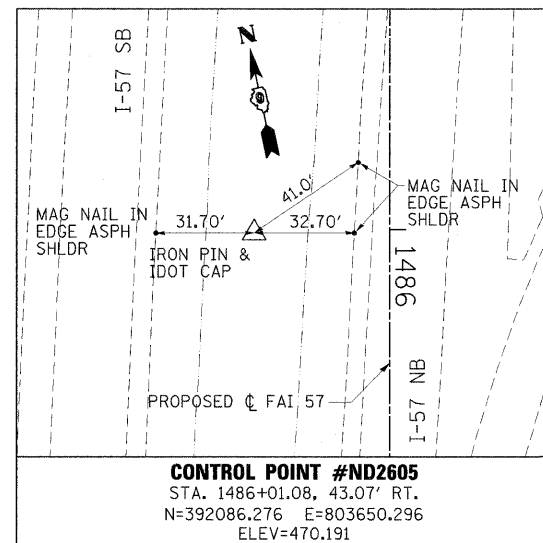
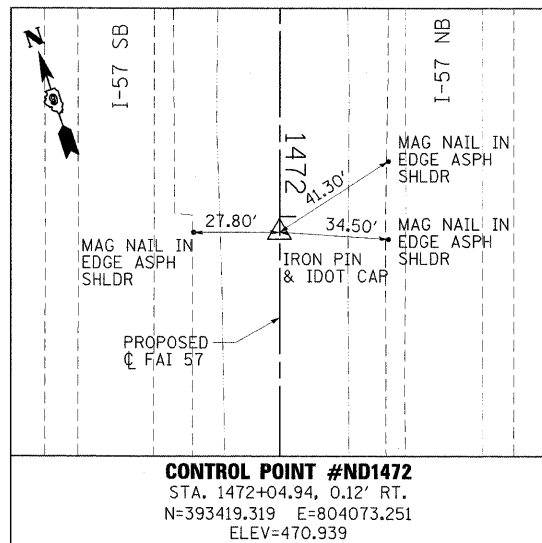
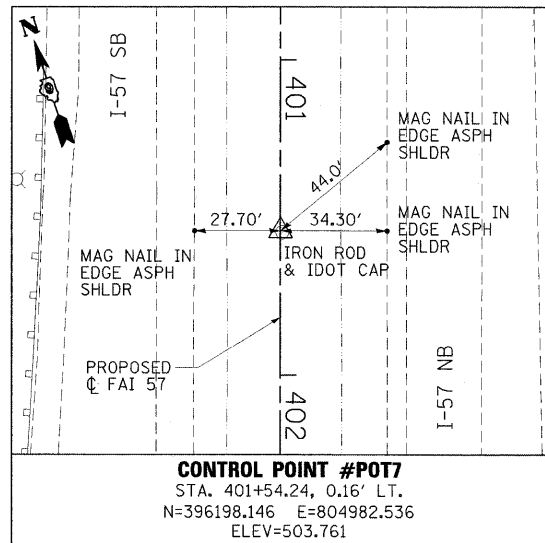
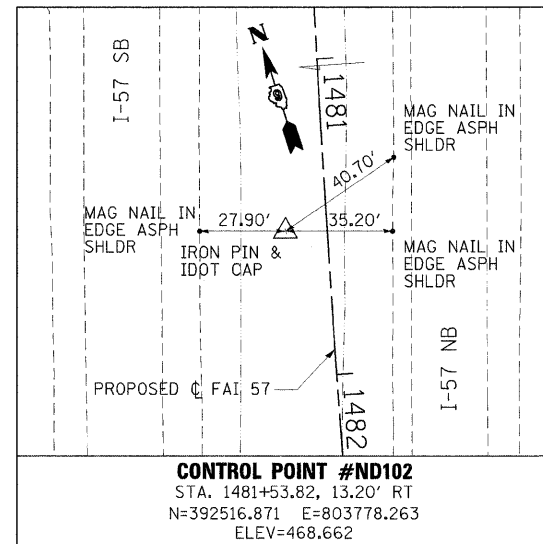
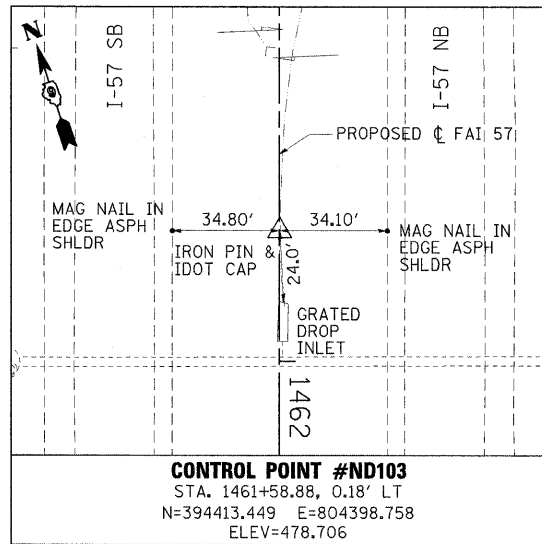
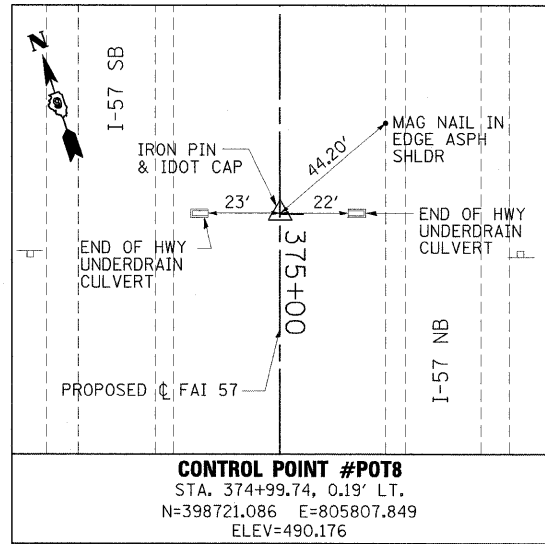


I-57 BENCHMARK LOCATIONS



- BM "2900" STA. 403+51.37 ±, 6.14' ± RT. F.A.I. 57
CUT SQUARE IN C OF EAST SIGN TRUSS BASE, SIGN LABELED "EXIT53/MAINST. 1 1/4 MI.", LOCATED ON I-57 SBL, NORTH OF MORGAN AVE., AT THE NORTH END OF RAMP "H", ~45.0' LEFT OF THE I-57 SBL C @ STA. 403+50.
ELEVATION = 504.711
- BM "BM 1901" STA. 417+14.28 ±, 143.24' ± RT. F.A.I. 57
TOP OF EASTERN MOST BOLT ON SIGN BASE, 10' RIGHT OF MORGAN AVE OFF-RAMP "H" @ STA. 16+00, ~92.0' RIGHT OF THE I-57 SBL C @ STA. 417+50.
ELEVATION = 489.447
- BM "PSM 100-09-05" STA. 1477+29.84 ±, 806.11' ± RT. F.A.I. 57
IDOT DISK SET IN TOP OF PRE-CAST MONUMENT, AT MORGAN AVE. & RAMP "H", WEST OF I-57, NE QUADRANT
ELEVATION = 487.435
- BM "PSM 100-09-01" STA. 1474+19.19 ±, 177.37' ± LT. F.A.I. 57
IDOT DISK SET IN TOP OF NE WINGWALL OF STR #100-0092 (MORGAN AVE.)
ELEVATION = 491.519
- BM "NDCP12" STA. 1488+01.04 ±, 57.37' ± RT. F.A.I. 57
ALUMINUM PSM, SET IN CONCRETE, CAP STAMPED "CP12 1488+00", LOCATED IN I-57 MEDIAN NORTH OF BRIDGE OVER NEW ROUTE 13 53.0' RIGHT OF THE I-57 NBL C @ STA. 1488+00.
ELEVATION = 470.021
- BM "NDCP11" STA. 1489+01.72 ±, 57.23' F.A.I. 57
ALUMINUM PSM, SET IN CONCRETE, CAP STAMPED "CP11 1489+00", LOCATED IN I-57 MEDIAN NORTH OF BRIDGE OVER NEW ROUTE 13 49.5' RIGHT OF THE I-57 NBL C @ STA. 1489+00.
ELEVATION = 470.197
- BM "NDCP10" STA. 1493+03.95 ±, 56.62' ± RT. F.A.I. 57
ALUMINUM PSM, SET IN CONCRETE, CAP STAMPED "CP10 1493+00", LOCATED IN I-57 MEDIAN SOUTH OF BRIDGE OVER NEW ROUTE 13 47.3' RIGHT OF THE I-57 NBL C @ STA. 1493+00.
ELEVATION = 468.568
- BM "NDCP9" STA. 1494+04.50 ±, 56.46' ± RT. F.A.I. 57
ALUMINUM PSM, SET IN CONCRETE, CAP STAMPED "CP9 1494+00", LOCATED IN I-57 MEDIAN SOUTH OF BRIDGE OVER NEW ROUTE 13 49.6' RIGHT OF THE I-57 NBL C @ STA. 1494+00.
ELEVATION = 467.113
- BM "SB*1 RESET" STA. 1517+22.08 ±, 89.79' ± RT. F.A.I. 57
CUT SQUARE ON THE SW WINGWALL OF SN 100-0087, I-57 SB OVER C.O. & E. RAILROAD
ELEVATION = 466.409
- BM "NB*2 RESET" STA. 1515+94.78 ±, 83.17' ± LT. F.A.I. 57
CUT SQUARE ON NE WINGWALL OF SN 100-0087, I-57 NB OVER C.O. & E. RAILROAD
ELEVATION = 464.953
- BM "11" STA. 1570+84.31 ±, 3.73' ± LT. F.A.I. 57
CHISLED "□" ON SE CORNER OF A CONC. PAD FOR PIER PROTECTION BARRELS, ON THE S. SIDE OF CENTER PIER OF S.N. 100-0055 IN MEDIAN OF I-57
ELEVATION = 470.518
- BM "11A" STA. 1570+91.16 ±, 575.60' ± LT. F.A.I. 57
CHISLED "□" ON TOP CENTER OF SOUTH HEADWALL OF A 24" RCCP ON SOUTH SIDE OF WESTMINSTER AVE AND EAST SIDE OF OVERPASS (SN 100-0055) OVER I-57
ELEVATION = 463.605
- BM "11B" STA. 1570+62.59 ±, 105.88' ± LT. F.A.I. 57
CHISLED "□" ON TOP OF SE WINGWALL OF SN 100-0055 (WESTMINSTER AVE OVERPASS)
ELEVATION = 492.453
- BM "11C" STA. 1569+68.64 ±, 670.14' ± RT. F.A.I. 57
CHISLED "X" ON SOUTHERLY TOP FLANGE BOLT OF A FIRE HYDRANT ON EAST SIDE OF DRIVEWAY OF HOUSE #2604 ALONG WESTMINSTER AVE., WEST OF I-57 OVERHEAD STRUCTURE.
ELEVATION = 479.607

- NOTES:**
1. HORIZONTAL CONTROL BASED ON THE ILLINOIS STATE PLANE COORDINATES NAD 83 (1997 ADJUSTMENT) EAST STATE.
 2. VERTICAL CONTROL BASED ON NAVD (1988).
 3. HORIZONTAL AND VERTICAL CONTROL FOR THIS PROJECT BASED ON DIFFERENT DATUM THAN RECENTLY COMPLETED/ONGOING PROJECTS. CONTRACTOR SHALL ONLY USE CONTROL POINTS LISTED HEREIN FOR LAYOUT ON THIS CONTRACT AND VERIFY ACCURACY OF CONTROL LOCATED WITHIN ADJACENT PROJECTS PRIOR TO LAYOUT.
 4. CONTROL FOR HILLVIEW WAY SHEETS 123-135 SHALL BE BASED ON STAKEOUT COORDINATES LISED ON SHEET 129

FILE NAME = ...ND973182-shr-ATB_007_Ties.dgn	USER NAME = Rob Heady	DESIGNED - MJO	REVISED -	STATE OF ILLINOIS DEPARTMENT OF TRANSPORTATION	ALIGNMENT TIES AND BENCHMARKS INTERSTATE 57	F.A. RTE.	SECTION	COUNTY	TOTAL SHEETS	SHEET NO.	
PLOT SCALE = 30,0000' / IN.	DRAWN - RAH	CHECKED - BJD	REVISED -		SCALE:	SHEET NO. OF SHEETS	STA.	TO STA.	WILLIAMSON	968	91
PLOT DATE = 10/7/2011	DATE - 10/07/11	REVISED -	REVISED -		STA.	TO STA.	F.A.I. 57 AND F.A.P. 331	CONTRACT NO. 78182	ILLINOIS FED. AID PROJECT		