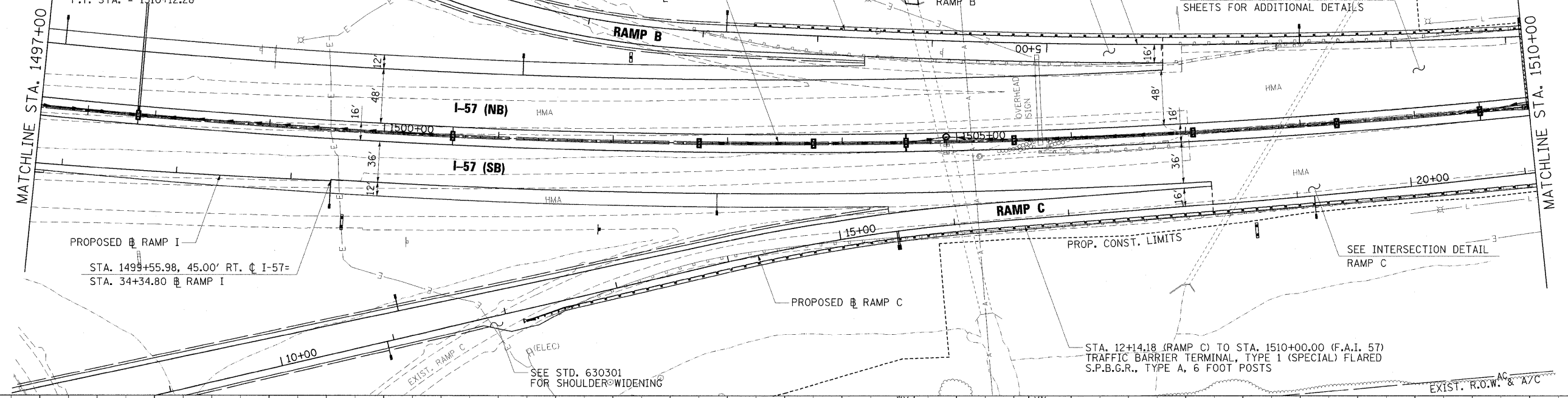
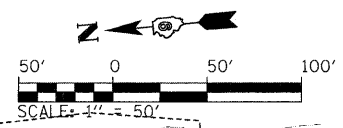


PROP.  $\curvearrowright$  I-57 CURVE-2 DATA  
 PI STA. = 1502+91.47  
 $\Delta = 12^\circ 45' 38''$  (LT)  
 $D = 0^\circ 52' 53''$   
 $R = 6,500.00'$   
 $T = 726.82'$   
 $L = 1,447.63'$   
 $E = 40.51'$   
 $e = 3.0\%$   
 $T.R. = 113'$   
 $S.E. RUN = 225'$   
 $P.C. STA. = 1495+64.64$   
 $P.T. STA. = 1510+12.28$

STA. 7+55.63 (RAMP B) TO STA. 1510+00.00 (F.A.I. 57)  
 TRAFFIC BARRIER TERMINAL, TYPE-2  
 S.P.B.G.R., TYPE A, 6 FOOT POSTS

STA. 1505+01.96  
 229.67' LT.

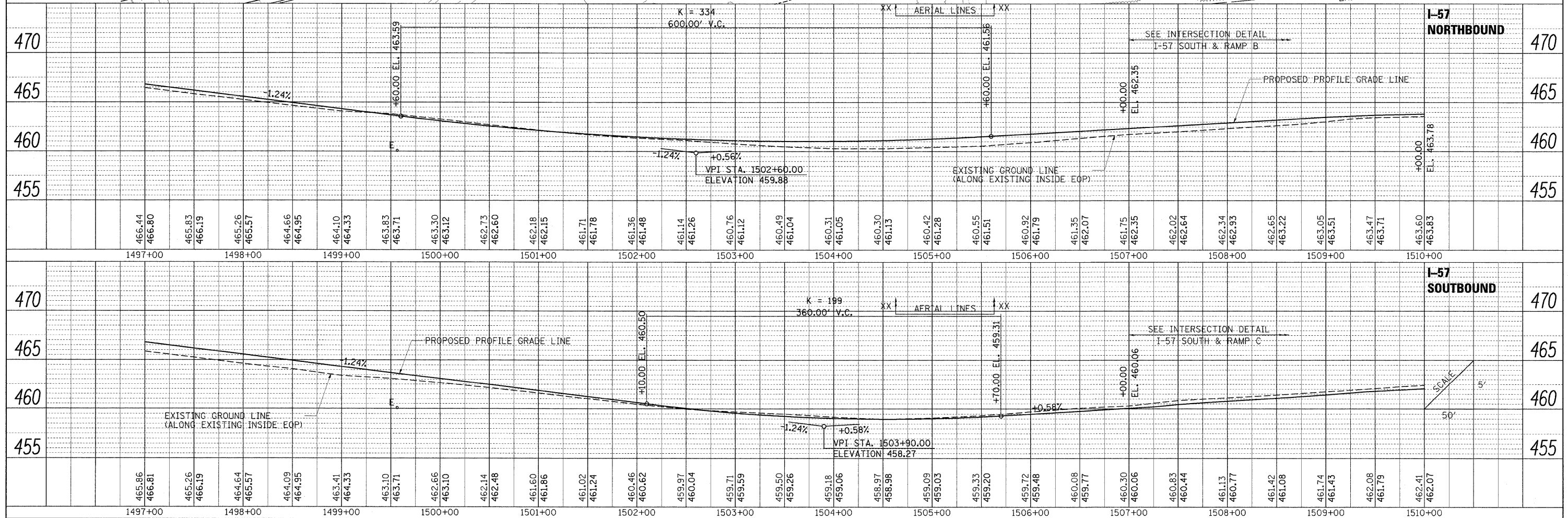


PROPOSED  $\curvearrowright$  RAMP I  
 STA. 1499+55.98, 45.00' RT.  $\curvearrowright$  I-57=  
 STA. 34+34.80  $\curvearrowright$  RAMP I

STA. 12+14.18 (RAMP C) TO STA. 1510+00.00 (F.A.I. 57)  
 TRAFFIC BARRIER TERMINAL, TYPE 1 (SPECIAL) FLARED  
 S.P.B.G.R., TYPE A, 6 FOOT POSTS

PLAN	SURVEYED	BY	DATE
	PLOTTED		
	CHECKED		
	NO. OF WAY CHECKED		
	PAID FILE NAME		

PROFILE	SURVEYED	BY	DATE
	PLOTTED		
	CHECKED		
	NO. OF WAY CHECKED		
	PAID FILE NAME		



FILE NAME =	USER NAME = Brad Downen	DESIGNED - BJD	REVISED -	<b>STATE OF ILLINOIS</b> <b>DEPARTMENT OF TRANSPORTATION</b>	<b>PLAN AND PROFILE</b> <b>INTERSTATE 57</b>	F.A. RTE.	SECTION	COUNTY	TOTAL SHEETS	SHEET NO.	
... \D978182-shr-p1nprf157-085.dgn		CHECKED - RAH	REVISED -			IXI-6-2HKB-2, HB-1,2	IX-1R-1	WILLIAMSON	968	98	
		DRAWN - BJD	REVISED -			* F.A.I. 57 AND F.A.P. 331 CONTRACT NO. 78182					
		CHECKED - 10/07/11	REVISED -			ILLINOIS FED. AID PROJECT					