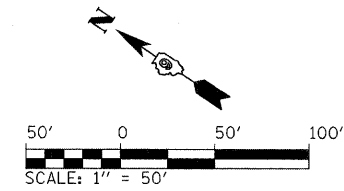
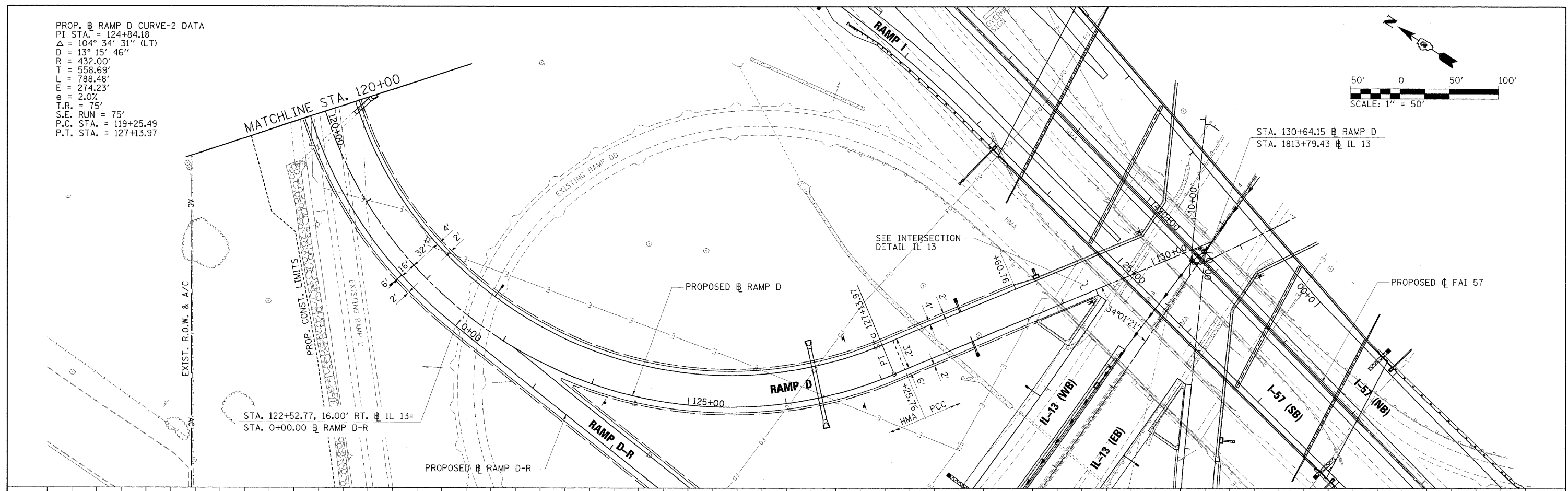


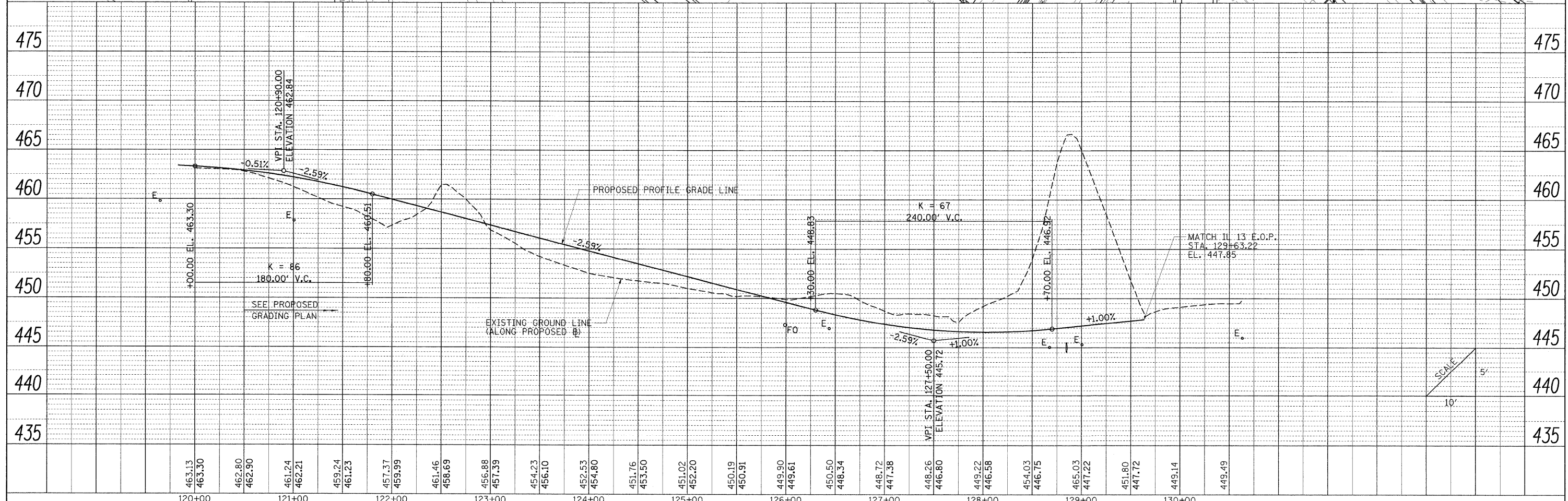
PROP. RAMP D CURVE-2 DATA  
 PI STA. = 124+84.18  
 $\Delta = 104^\circ 34' 31''$  (LT)  
 $D = 13^\circ 15' 46''$   
 $R = 432.00'$   
 $T = 558.69'$   
 $L = 788.48'$   
 $E = 274.23'$   
 $e = 2.0\%$   
 $T.R. = 75'$   
 $S.E. RUN = 75'$   
 $P.C. STA. = 119+25.49$   
 $P.T. STA. = 127+13.97$



PLAN	SURVEYED	BY	DATE
	PLOTTED		
	NOTE BOOK		
	NO.		
	STRUCTURE		
	NOTATION		
	CPRO		



PROFILE	SURVEYED	BY	DATE
	PLOTTED		
	NOTE BOOK		
	NO.		
	STRUCTURE		
	NOTATION		
	CPRO		



FILE NAME =	USER NAME = Brad Downen	DESIGNED - BJD	REVISED -	<b>STATE OF ILLINOIS DEPARTMENT OF TRANSPORTATION</b>	<b>PLAN AND PROFILE RAMP D</b>	F.A. RTE.	SECTION	COUNTY	TOTAL SHEETS	SHEET NO.
... \0978182-sh1-plnpr-FRAMPD-022.dgn	PLOT SCALE = 50.0000' / IN.	DRAWN - RAH	REVISED -			* (X1-6-2)HBK-2, HB-1,2; (X-1R-1	WILLIAMSON	968	115	
	PLOT DATE = 10/12/2011	CHECKED - BJD	REVISED -			* F.A.I. 57 AND F.A.P. 331	CONTRACT NO. 78182	ILLINOIS FED. AID PROJECT		
		DATE - 10/07/11	REVISED -			SCALE: 1" = 50'	SHEET NO. OF SHEETS	STA. 120+00 TO STA. 130+64.15		